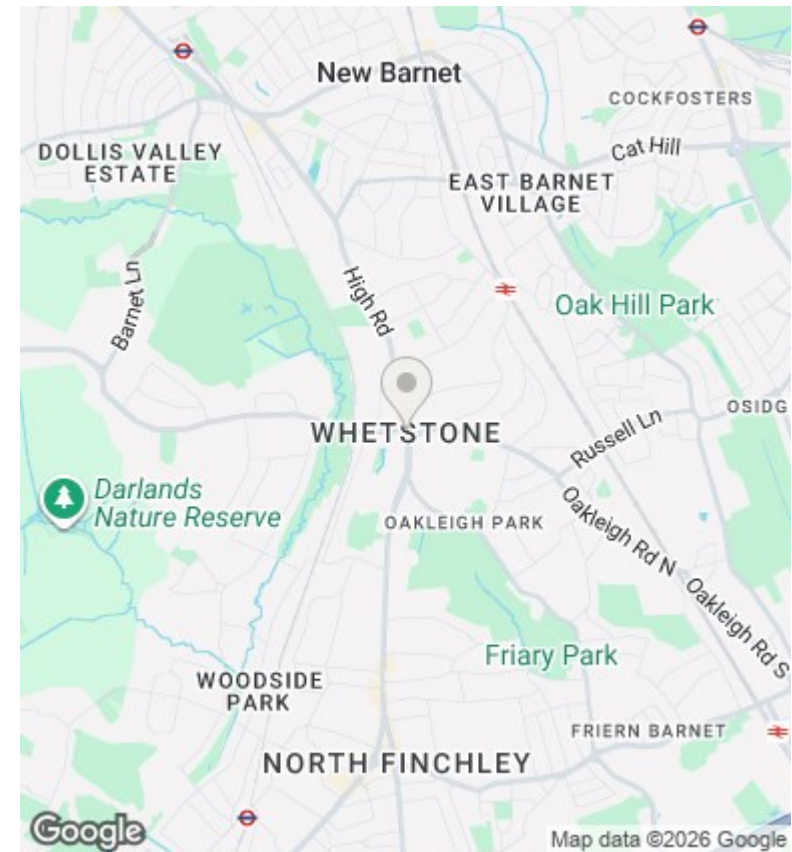
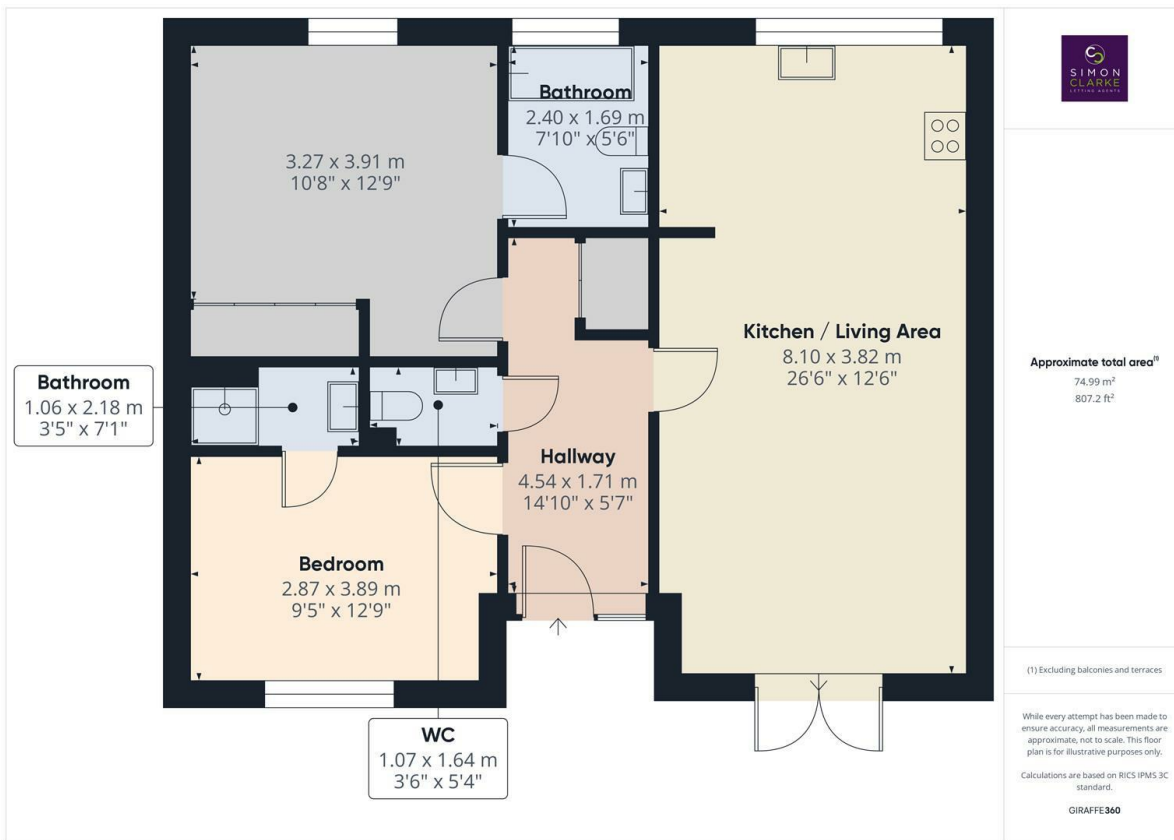




Totteridge Lane, London, N20 9QH

£2,000 PCM

- 2 Bedroom 2 bathroom apartment
- Allocated off street parking
- Available on long term tenancy (initial 12 months)
- Available Now
- Lift serviced apartment
- Modern fitted kitchen open plan with lounge
- Unfurnished / part-furnished
- Own patio area offering stunning far reaching views over Totteridge
- Deposit - £2305 (equivalent to 5 weeks rent)
- Council tax band D



### Directions

### Viewings

Viewings by arrangement only. Call 02083499000 to make an appointment.

### Council Tax Band

D

### EPC Rating:

D

Energy Efficiency Rating		
	Current	Potential
<i>Very energy efficient - lower running costs</i>		
(92 plus) <b>A</b>		
(81-91) <b>B</b>		
(69-80) <b>C</b>		
(55-68) <b>D</b>	66	72
(39-54) <b>E</b>		
(21-38) <b>F</b>		
(1-20) <b>G</b>		
<i>Not energy efficient - higher running costs</i>		
<b>England &amp; Wales</b>	EU Directive 2002/91/EC	