



## Avenue Road, NW8

£761 Per week

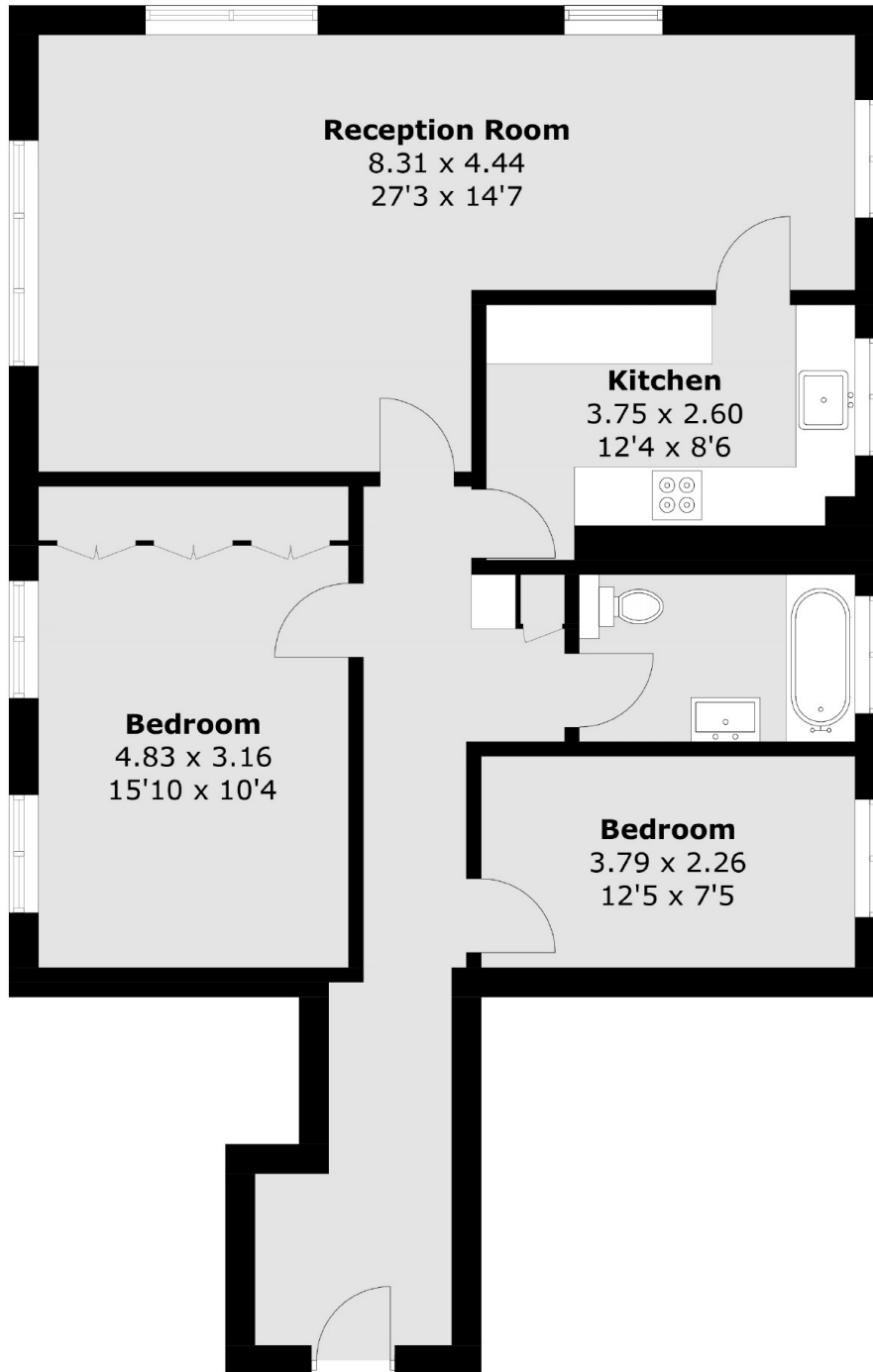
A two double bedroom apartment on the first floor of a portered block. Spacious reception room with separate dining area, brand new kitchen with modern appliances, two good size double bedrooms with storage and family bathroom. Wood floors throughout.

95 Avenue Road is located a short distance to local shops, restaurant's and supermarkets on Finchley Road, Swiss Cottage underground station (Jubilee Line) and the open green spaces of Regents Park and Primrose Hill.

### Features

- Two Double Bedrooms
- Spacious Reception Room
- Second Floor Via Lift
- Day Porter
- Wood Floors Throughout
- Heating and Hot Water Included

# Avenue Road, London, NW8



Total area (approx.): 85.1 sq. m (916.0 sq. ft)