



Oppidans Road, NW3

£2,750 Per calendar month

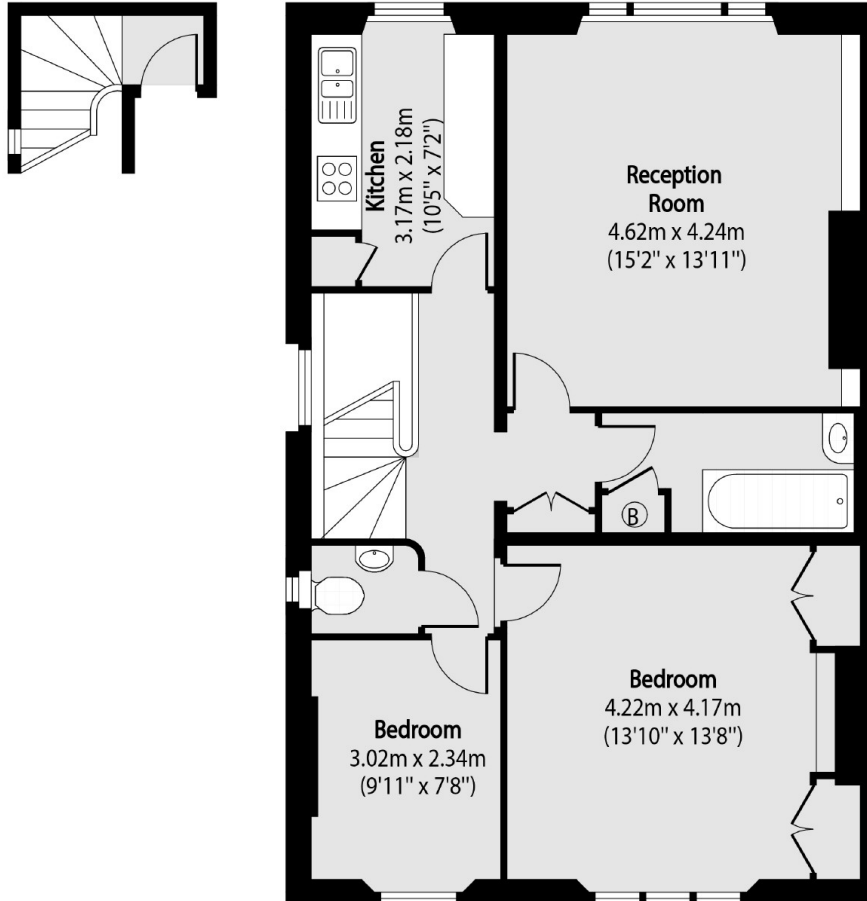
A newly decorated, two double bedroom top floor apartment close to Primrose Hill. Spacious reception room, separate kitchen with good storage, master bedroom with built in wardrobes, second double bedroom, bathroom with shower over bath and separate WC.

Oppidans Road is located close to Primrose Hill and a short distance from Regents Park Road which has a range of boutique shops, cafés and restaurants.

Features

Newly Decorated
Two Double Bedrooms
Top Floor Apartment
Separate Kitchen
Spacious Reception Room
Next To Primrose Hill

Oppidans Road, London, NW3



First Floor
Entrance

Second Floor

Total area (approx): 71.72 sq m (772 sq. ft)