



**3 Castlemere Avenue, Queenborough**  
Queenborough

Offers in Region of **£230,000**

## 3 Castlemere Avenue

Queenborough, Queenborough

Spacious three bedroom home in central Queenborough with two receptions, loft room, period features, low maintenance garden, and easy access to shops, schools, station, and local amenities. Council Tax band: A

Tenure: Freehold

EPC Energy Efficiency Rating: D

EPC Environmental Impact Rating:

- 3/4 Bedroom spacious family home with 2 reception rooms
- Situated in historic Queenborough close to shops, school, train station and a wealth of local amenities
- Community Centre, Village Hall, Marina and a local park all within walking distance
- All bedrooms are a good size and there is a handy loft room that can be used as a fourth bedroom
- The home boasts many original features including fireplaces
- Beautiful, low maintenance garden and a courtyard to the front
- Ideal first time buy for a growing family
- Viewing is highly recommended
- Over 1100 sq ft







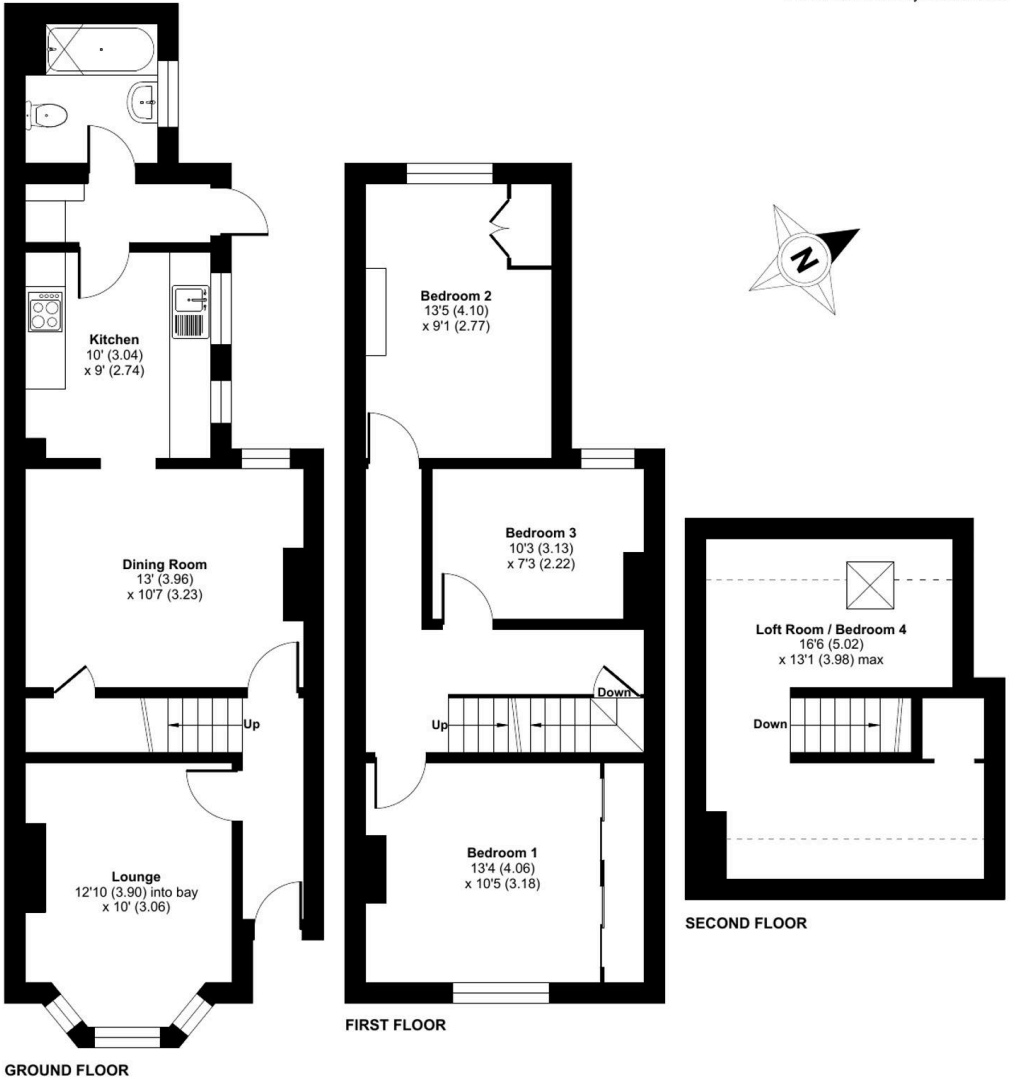
# Castlemere Avenue, Queenborough, ME11 5BS

Approximate Area = 1130 sq ft / 104.9 sq m

Limited Use Area(s) = 50 sq ft / 4.6 sq m

Total = 1180 sq ft / 109.5 sq m

For identification only - Not to scale





## Homely Bespoke Estate Agents

10 Orchard Way, Eastchurch - ME12 4DS

07817 727321

[lynne@homelyproperties.co.uk](mailto:lynne@homelyproperties.co.uk)

[www.homelyproperties.co.uk](http://www.homelyproperties.co.uk)