

for sale

£375,000



Sorrel Crescent Wootton Northampton NN4 6FR

A beautifully presented three-bedroom detached family home, complete with garage, driveway, and a landscaped rear garden. Further benefits include cloakroom and ensuite to master bedroom. Viewing advised.

Sorrel Crescent Wootton Northampton NN4 6FR

Entrance Hall

Door to the front elevation. doors leading to the cloakroom, lounge, kitchen/diner and storage cupboard. Stairs rise to the first floor.

Cloakroom

Double glazed window to the front elevation. White suite comprising of low level wc and wash hand basin, with part tiling. Radiator.

Lounge

Double glazed window to the front elevation. Radiator.

Kitchen/Diner

Double glazed window to the rear elevation and french doors to the rear elevation opening out onto the garden. Fitted kitchen comprising of a wall and base level units, with works surfaces and sink drainer. Integrated appliances comprising of integrated oven with four ring gas hob and cooker hood over, integrated fridge/freezer and washing machine. Spot lights to ceiling.

First Floor Landing

Stairs rise from the entrance hall. Double glazed window to the side elevation. Loft access. Airing cupboard with shelving. Doors to all bedrooms and bathroom,

Bedroom One

Double glazed window to the rear elevation. Radiator. Built in wardrobe. Door to the en-suite.

Ensuite

Double glazed window to the side elevation. White suite comprising of low level wc, wash hand basin and shower cubicle with shower over and part tiling. Radiator.

Bedroom Two

Double glazed window to the front elevation and double glazed window to the side elevation. Radiator.

Bedroom Three

Double glazed window to the rear elevation. Radiator.

Bathroom

Double glazed window to the front elevation. White suite comprising of low level wc, wash hand basin, bath with mixer taps and electric shower with complementary part tiling. Heated towel rail.



Outside

Front

Pathway to the front door. Driveway to the side providing off road parking, gated access to the rear garden.

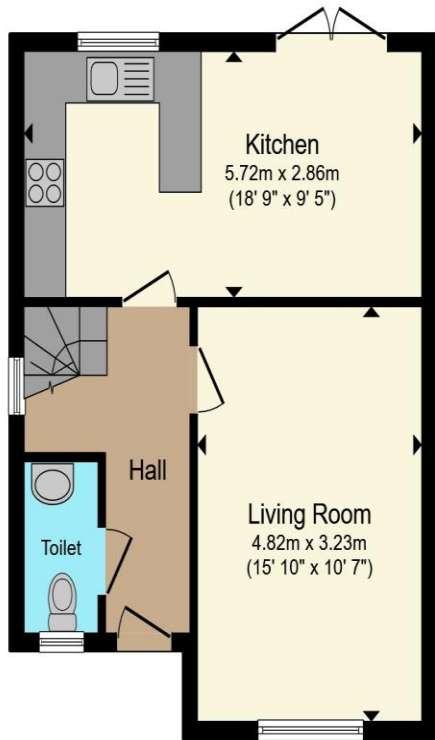
Rear

Beautifully landscaped rear garden. Decking area leading onto artificial turf with fully retained fencing. Water tap and electric point. Courtesy door to the garage. Gated access to the driveway.

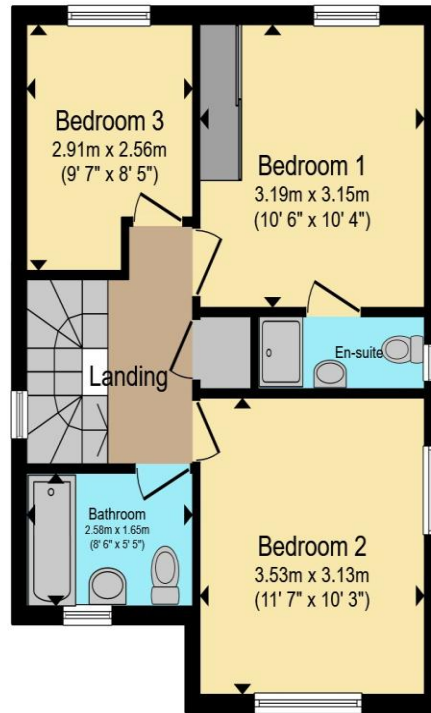
Garage

Single garage with up and over door. Power and light connected.





Ground Floor



First Floor

Total floor area 83.9 m² (903 sq.ft.) approx

This floor plan is for illustrative purposes only. It is not drawn to scale. Any measurements, floor areas (including any total floor area), openings and orientation are approximate. No details are guaranteed, they cannot be relied upon for any purpose and they do not form part of any agreement. No liability is taken for any error, omission or misstatement. A party must rely upon its own inspection(s). Powered by www.propertybox.io



To view this property please contact Connells on

T 01604 706644
E woottonfields@connells.co.uk

11 Tudor Court Wootton Hope Drive Wootton
 NORTHAMPTON NN4 6FF

Property Ref: WFL408795 - 0004

Tenure: Freehold EPC Rating: B

Council Tax Band: D

view this property online
connells.co.uk/Property/WFL408795



1. MONEY LAUNDERING REGULATIONS Intending purchasers will be asked to produce identification documentation at a later stage and we would ask for your co-operation in order that there will be no delay in agreeing the sale. 2. These particulars do not constitute part or all of an offer or contract. 3. The measurements indicated are supplied for guidance only and as such must be considered incorrect. Potential buyers are advised to recheck measurements before committing to any expense. 4. We have not tested any apparatus, equipment, fixtures, fittings or services and it is in the buyers interest to check the working condition of any appliances.

Connells Residential is registered in England and Wales under company number 1489613, Registered Office is Cumbria House, 16-20 Hockliffe Street, Leighton Buzzard, Bedfordshire, LU7 1GN. VAT Registration Number is 500 2481 05.

see all our properties at www.connells.co.uk | www.rightmove.co.uk | www.zoopla.co.uk