



**Staffa Road, Maidstone, Kent, ME15 9ST**  
**Offers In Excess Of £425,000**



**EXTENDED FOUR BEDROOM HOME WITH ENSUITE TO THE GUEST BEDROOM IN A QUIET CUL DE SAC LOCATION IN THE SOUGHT AFTER LOOSE VILLAGE**

Nestled in the charming village of Loose, this property is the perfect family home! Boasting a gorgeous open plan kitchen/diner that will make entertaining a delight. The kitchen is complete with an array of modern fitted units and a breakfast bar for those busy mornings. You'll love the cosy lounge with a feature log burner to keep you warm and snug during chilly winter evenings.

The current owner has extended and updated the property, so there's plenty of space and flexibility to suit your family's needs. Upstairs, there are four bedrooms, a family bathroom, and a separate w/c. The guest bedroom has the added luxury of an en-suite shower room, perfect for accommodating your guests in style.

Outside, there is ample parking on the driveway for two to three vehicles, along with an integral garage with an electric roller door. The low maintenance rear garden has a neat artificial lawn and patio seating area for relaxing with family and friends on sunny afternoons.

This property is situated in a sought-after cul de sac, within walking distance to the renowned Loose Primary school, rated 'Outstanding' by Ofsted. The area also offers an excellent range of private and state schools catering for children of all ages. You'll have everything you need on your doorstep, with local shops, restaurants, and takeaways, including a Sainsbury's local and Newsagents with a Post Office. Don't miss out on this exceptional opportunity and call Page and Wells Loose Office today to arrange your viewing.



**GROUND FLOOR**

**Entrance Hall**

**Lounge 14'3" x 9'10",223'1" (4.36m x 3,68)**

**Kitchen/Breakfast Room 26'0" x 9'6" (7.93m x 2.92m)**

**Conservatory 17'1" x 10'1" (5.22m x 3.09m)**

**FIRST FLOOR**

**Bedroom 1 13'10" x 12'2" (4.22m x 3.72m)**

**Bedroom 2 19'4" x 6'4" (5.90m x 1.94m)**

**En-suite Shower Room**

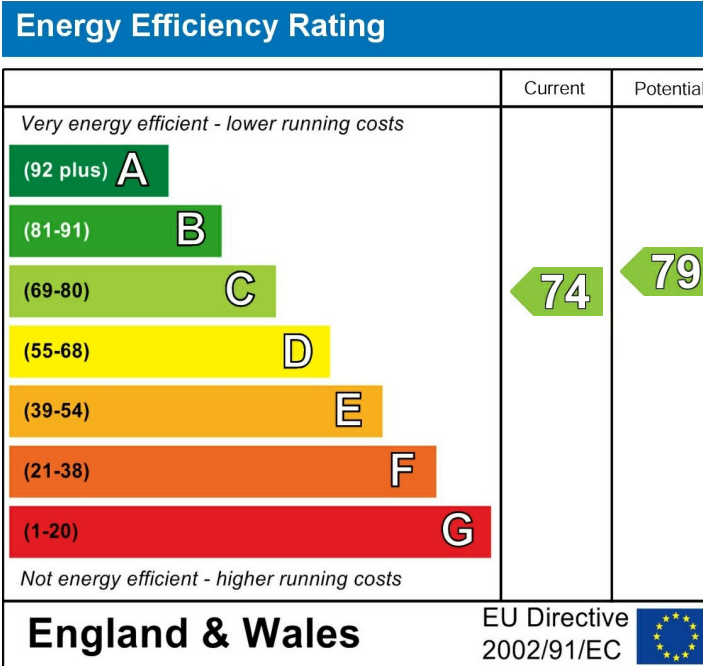
**Bedroom 3 11'2" x 9'1" (3.41m x 2.79m)**

**Bedroom 4 8'4" x 7'10" (2.55m x 2.40m)**

**Bathroom**

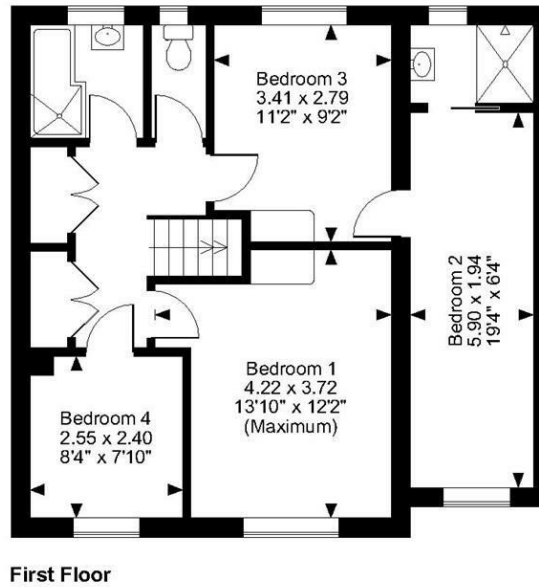
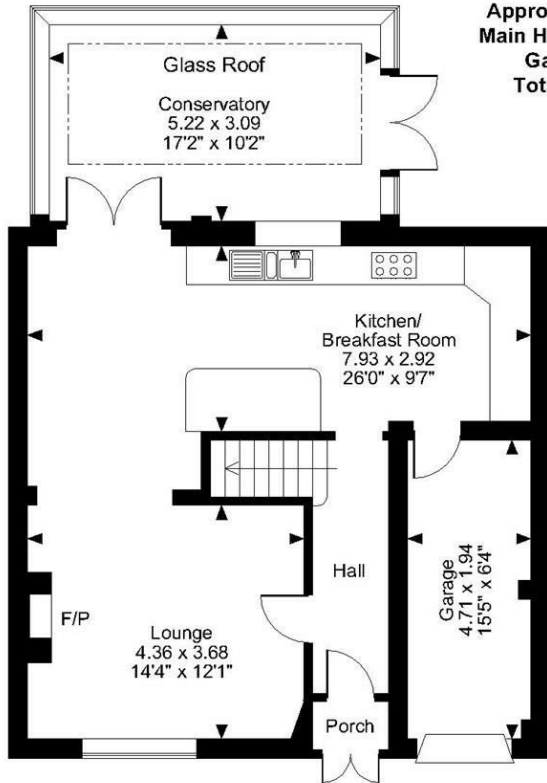
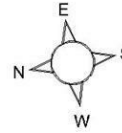
**EXTERNALLY**

**Garage 15'5" x 6'4" (4.71m x 1.94m)**



Page & Wells limited for themselves and for the vendors of this property whose agents they are give notice that: 1. These particulars do not constitute any part of, an offer or a contract. 2. All statements contained in these particulars as to this property are made without responsibility on the part of Page & Wells Limited or the Vendor. 3. None of the statements contained in these particulars as to the property is to be relied on as statements or representations of fact. 4. Any intending purchaser must satisfy himself by inspection or otherwise as to the correctness of each of the statements contained in these particulars. 5. The vendor does not make or give, and neither Page & Wells Limited nor any person in their employment has any authority to make or give any representation whatsoever in relation to this property. These particulars are supplied on the understanding that all negotiations are carried out throughout Page & Wells Limited. Properties with a reference prefixes EAA are those which Page & Wells Limited disclose an interest in accordance with the provisions of the Estates Agents Act 1979

**Staffa Road, Maidstone**  
**Approximate Gross Internal Area**  
**Main House = 1386 Sq Ft/129 Sq M**  
**Garage = 98 Sq Ft/9 Sq M**  
**Total = 1484 Sq Ft/138 Sq M**



**FOR ILLUSTRATIVE PURPOSES ONLY - NOT TO SCALE**

The position & size of doors, windows, appliances and other features are approximate only.  
 © ehouse. Unauthorised reproduction prohibited. Drawing ref. dig/8539228/SS

