



Property Features

- Three/four double bedrooms
- Two bathrooms
- Open plan kitchen/dining room/sitting room
- Secluded south facing garden
- Family room/fourth bedroom
- Close to M40 and Beaconsfield station
- Short walk to local schools and village centre
- Council tax band D | EPC C:69

Full Description

A lovely and deceptively spacious three/four-bedroom semi-detached family home, ideally situated in the heart of the village in this highly desirable location, just a short walk from the highly regarded Carrington School.

Beautifully presented throughout, and offering flexible and well-proportioned accommodation perfect for modern family living. The heart of the home is the impressive open-plan kitchen, family and dining room, creating a wonderful sociable space with doors opening directly onto the secluded rear garden—ideal for both everyday living and entertaining.

The ground floor also benefits from a versatile study which could equally serve as a fourth bedroom, a contemporary shower room, and a separate utility room adding further practicality.

Upstairs, the property offers three generous double bedrooms along with a well-appointed family bathroom, providing ample space for growing families.

Externally, the property enjoys a private and secluded rear garden, perfect for relaxing or outdoor dining, while to the front there is a driveway providing valuable off-street parking.

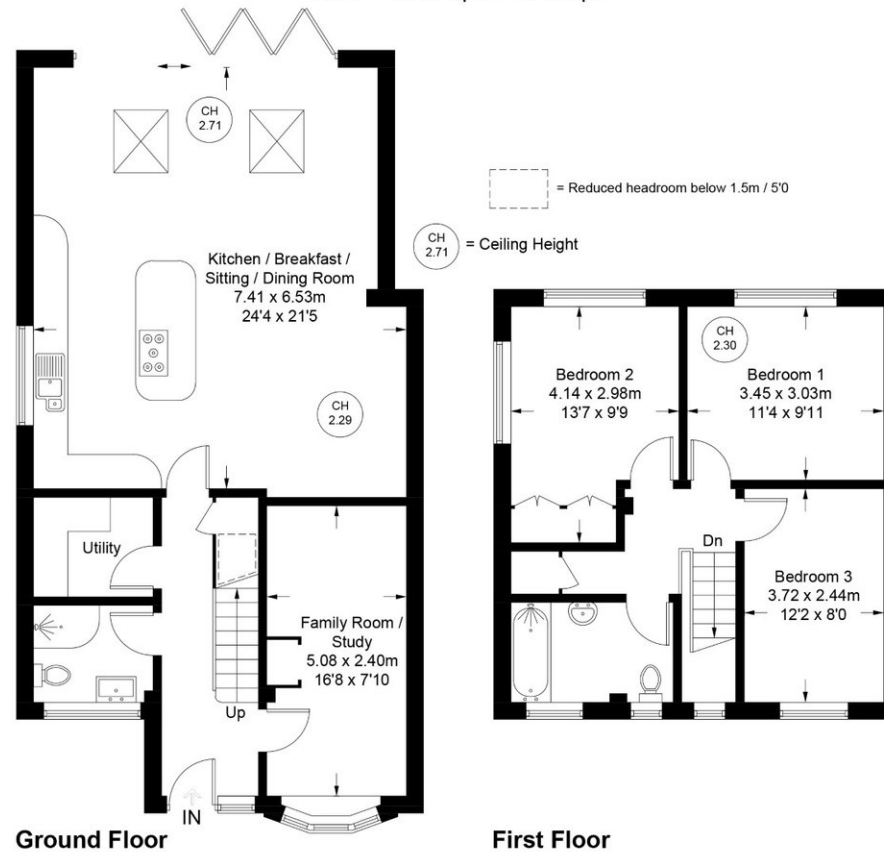
This superb home combines village charm, excellent school proximity, and spacious versatile accommodation, making it an ideal choice for families seeking both convenience and lifestyle.





Chapel Road

Approximate Gross Internal Area
Ground Floor = 78.9 sq m / 849 sq ft
First Floor = 45.5 sq m / 490 sq ft
Total = 124.4 sq m / 1339 sq ft



Floor Plan produced for Kingshills by Media Arcade Ltd ©.

Illustration for identification purposes only. Window and door openings are approximate. Whilst every attempt is made to assure accuracy in the preparation of this plan, please check all dimensions, shapes and compass bearings before making any decisions reliant upon them.

Kingshills Estate Agents
Covering Marlow
Bourne End, Maidenhead
& Surrounds

01628 561222
davidandsusan@kingshills.co.uk
kingshills.co.uk

Agents Note: Whilst every care has been taken to prepare these particulars, they are for guidance purposes only. All measurements are for general guidance purposes only and whilst every care has been taken to ensure accuracy, they should not be relied upon and potential buyers/tenants are advised to recheck the measurements