



PARKSIDE AVENUE, SE10

£425,000

One bedroom apartment

Recently built

11th floor

South east facing

Large balcony

Energy rating: b

@marshandparsons
marshandparsons.co.uk

MARSH &
PARSONS



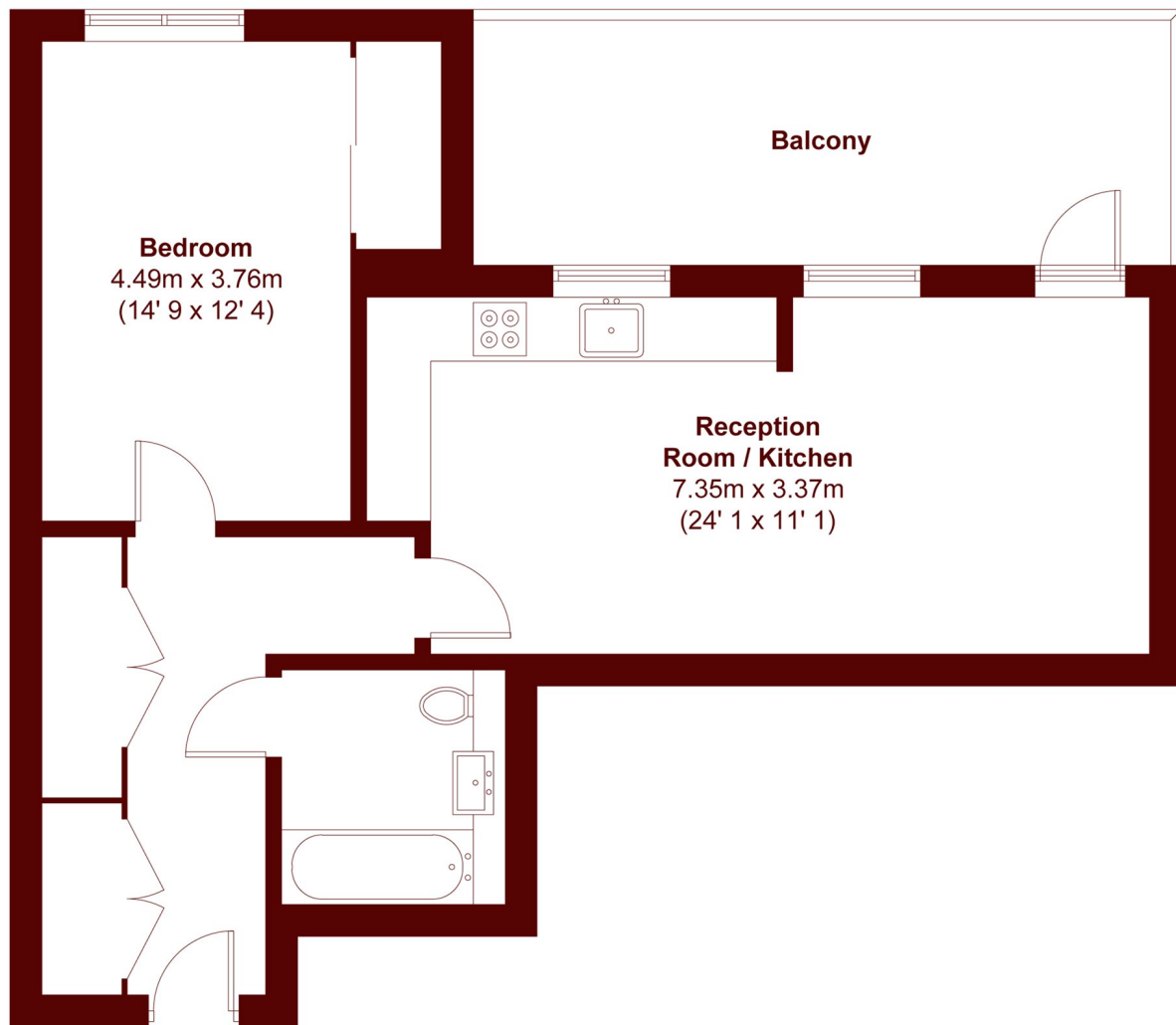
ABOUT THE PROPERTY

Bright, open plan living room featuring floor-to-ceiling windows with exceptional views over south east London and a high-spec, modern kitchen. Bedroom overlooking trees and protected woodland with fitted wardrobes and space for a full work from home setup. Larger than average balcony with stunning views towards the North Downs. Beautifully tiled, spacious bathroom complete with rain shower. Residents benefit from 24-hour concierge, gym, Peloton spin and yoga studios, all included in a low service charge with no ground rent.

Excellent transport links via Elverson Road, Lewisham and Greenwich stations, all within short walking distance. Greenwich park and Blackheath are moments away.



STEP INSIDE PARKSIDE AVENUE



Eleventh Floor

APPROX. GROSS INTERNAL FLOOR AREA = 604 SQFT / 56.1 SQM
APPROX. GROSS EXTERNAL BALCONY AREA = 84 SQFT / 7.8 SQM

Greenwich
020 8312 8312

Energy Rating: B We aim to make our particulars both accurate and reliable. However, they are not guaranteed; nor do they form part of an offer or contract. If you require clarification on any points then please contact us, especially if you're traveling some distance to view. Please note that appliances and heating systems have not been tested and therefore no warranties can be given as to their good working order

MARSH &
PARSONS