

Charles Street

Hillingdon • Middlesex • UB10 0SY

Guide Price: £425,000



coopers
est 1986

Charles Street

Hillingdon • Middlesex • UB10 0SY

A two bedroom, semi-detached house situated on Charles Street, a popular cul-de-sac situated just off the Uxbridge Road offering easy access to local shops, sought after schools and numerous recreational facilities. Uxbridge Town Centre and the Piccadilly/Metropolitan Line Station is a short distance away along with the A40/M40/M4 and M25. This property comprises 13ft reception room, 11ft dining room and the 12ft kitchen. To the first floor, there is the 13ft main bedroom, 11ft second bedroom and family bathroom. Outside, there is off street parking and a private rear garden main laid to lawn with a patio area across the back of the house.

Two bedroom house

Semi-detached

Cul-de-sac location

Great transport links

13ft reception room

11ft dining room

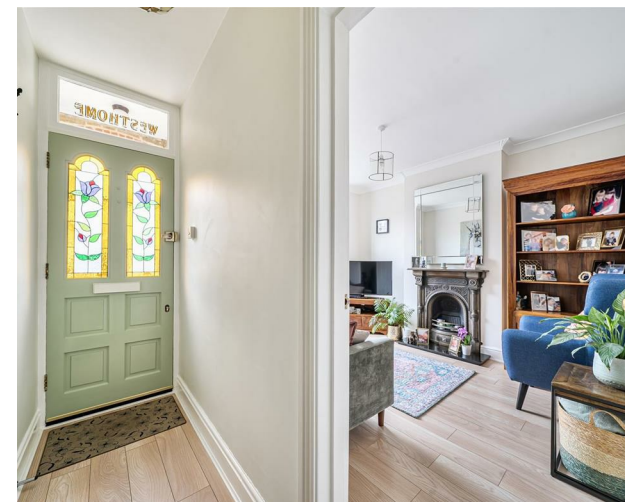
12ft kitchen

13ft main bedroom

Off street parking

Private rear garden

These particulars are intended as a guide and must not be relied upon as statements of fact. Your attention is drawn to the Important Notice on the last page.



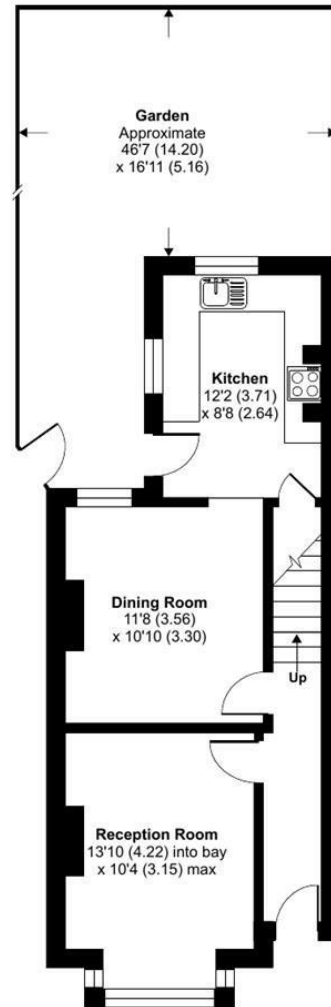




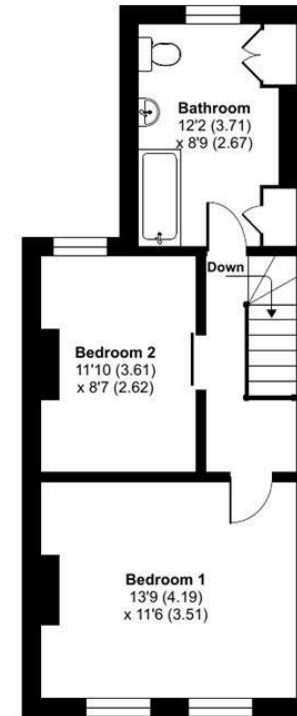
Charles Street, Uxbridge, UB10

Approximate Area = 903 sq ft / 83.8 sq m

For identification only - Not to scale



GROUND FLOOR



FIRST FLOOR



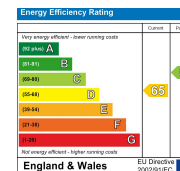
Floor plan produced in accordance with RICS Property Measurement 2nd Edition, Incorporating International Property Measurement Standards (IPMS2 Residential). © n/checom 2026. Produced for Coopers. REF: 1468403

coopers
est 1986

coopers
est 1986

109 Hillingdon Hill, Hillingdon Village,
Middlesex, UB10 0JQ
hillingdon@coopersresidential.co.uk

CoopersResidential.co.uk



Important Notice: These particulars, whilst believed to be accurate are set out as a general outline only for guidance and do not constitute any part of an offer or contract. Intending purchasers should not rely on them as statements or representation of fact, but must satisfy themselves by inspection or otherwise has the authority to make or give any representation or warranty in respect of the property.