

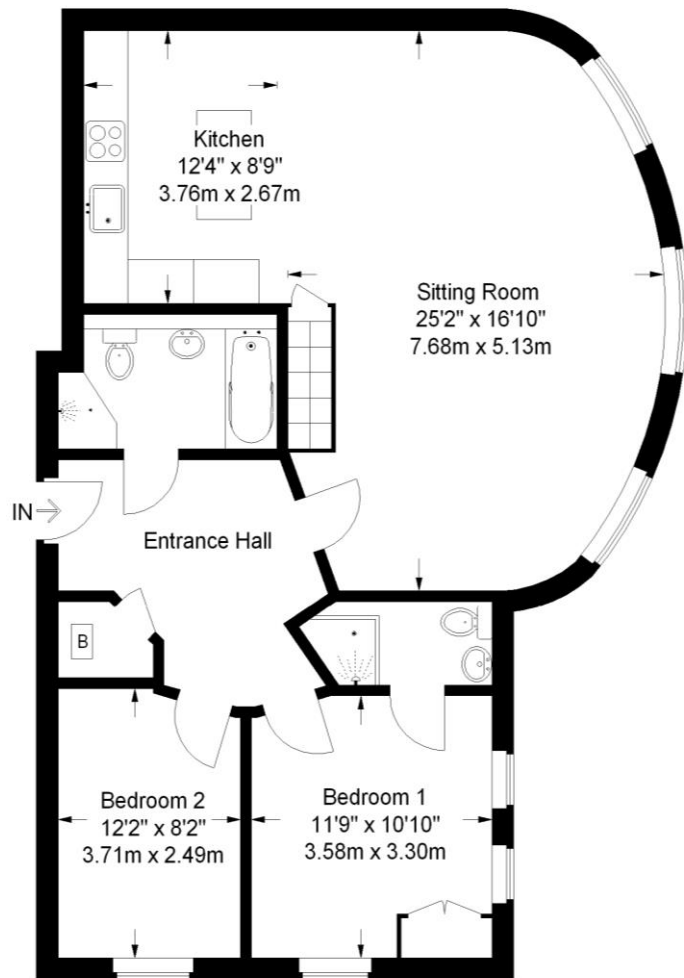
10 Tivoli Mansions

115 The Park, Cheltenham, Gloucestershire, GL50 2RW

readmaurice 



A south facing two bedroom first floor apartment set in this popular landmark development in The Park offered with lift access and offered with no onward chain.



Tivoli Mansions is a purpose built block located in a highly fashionable area of Cheltenham. The block has 16 apartments with number 10 positioned on the first floor.

The accommodation is well designed and spacious. The large open plan living area has splay bay overlooking Tivoli Street and the integrated kitchen is neatly positioned within the room. The Master Bedroom has an en suite shower and there is also an additional guest bedroom. The main bathroom also has a separate shower. The apartment is heating by gas central heating.

Full use of the communal gardens are available for the residents to enjoy and there is also a communal bike store. The apartment has one allocated parking space and there are two additional visitors space within the car park.

General

Services: All main services are believed to be connected
Local Authority: Cheltenham Borough Council
Council Tax: Band D
EPC: C

Management and Lease information: The freehold of the development was recently acquired by Tivoli Mansions (Cheltenham) Limited. The apartment will be sold with an equal share of the freehold. The apartment has since been granted a 999 year lease from March 2002 which will be completed upon completion of this transaction.

The property is managed by Cambray Property Management in Cheltenham. The annual service charge is £1365 pa 2020/21. **Please note pets are not permitted.**



10 Tivoli Mansions 115 The Park, Cheltenham, Gloucestershire, GL50 2RW
Approximate Gross Internal Area 947 sq ft / 88 sq m

These particulars, whilst believed to be accurate are set out as a general outline only for guidance and do not constitute any part of an offer or contract. Intending purchasers should not rely on them as statements or representation of fact, but must satisfy themselves by inspection or otherwise as to their accuracy. We have not carried out a detailed survey nor tested the services, appliances and specific fittings. Room sizes should not be relied upon for carpets and furnishings. The measurements given are approximate. No person in this firm's employment has the authority to make or give any representation or warranty in respect of the property.

readmaurice

48 Andover Road, Cheltenham GL50 2TL
Tel: 01242 241122
Email: post@readmaurice.co.uk
www.readmaurice.co.uk