



4 WILMSLOW COURT SAGARS ROAD HANDFORTH SK9 3TW

VIEWING HIGHLY RECOMMENDED

This fabulous two-bedroom, two-bathroom, ground floor apartment is located in this popular development in central Handforth.

Handforth Village offers a wide range of amenities such as local shopping facilities, bars and restaurants and is also within walking distance of Handforth Dean shopping centre.

Wilmslow Court is also in a great position for many transport links with Manchester Airport being less than a 20 minute drive away and Wilmslow train station offering direct train lines to Manchester Piccadilly and London Euston.

Communal entrance hallway, spacious private hallway, two excellent sized double bedrooms one of which benefits from a three-piece en-suite and a family bathroom with feature freestanding bath with shower taps

Large open plan modern fitted kitchen/dining/ lounge area, with electric hob and oven and fridge freezer.

Off Road Parking

UNFURNISHED AVAILABLE NOW

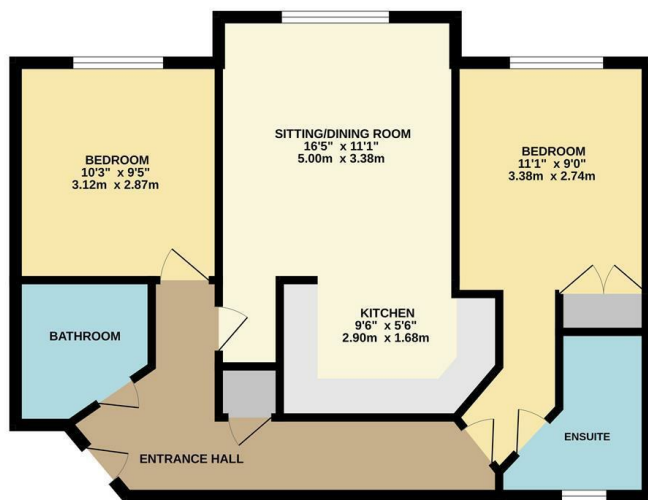
Contact Wilmslow 01625 536300 £1400.00pcm

COUNCIL TAX C

EPCD

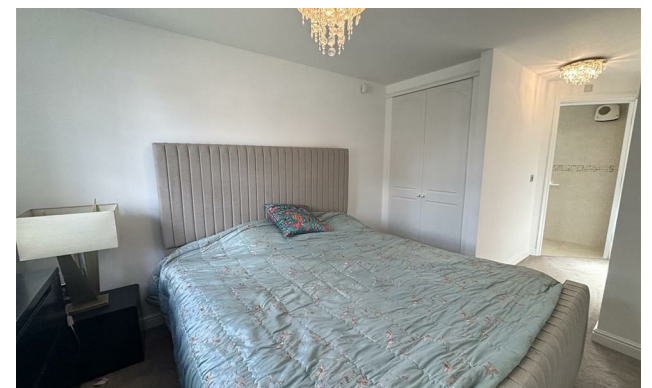


GROUND FLOOR



Measurements are approximate. Not to scale. Illustrative purposes only. Made with Metropix 12024

- GROUND FLOOR APARTMENT
- TWO BEDROOMS
- TWO BATHROOMS
- VILLAGE LOCATION
- OFF ROAD PARKING
- COUNCIL TAX C
- EPC D



Energy Efficiency Rating	
Very energy efficient - lower running costs	Current Potential
(92 plus) A	
(81-91) B	
(69-80) C	
(55-68) D	
(39-54) E	
(21-38) F	
(1-20) G	
Not energy efficient - higher running costs	
England & Wales	EU Directive 2002/91/EC

Environmental Impact (CO ₂) Rating	
Very environmentally friendly - lower CO ₂ emissions	Current Potential
(92 plus) A	
(81-91) B	
(69-80) C	
(55-68) D	
(39-54) E	
(21-38) F	
(1-20) G	
Not environmentally friendly - higher CO ₂ emissions	
England & Wales	EU Directive 2002/91/EC