



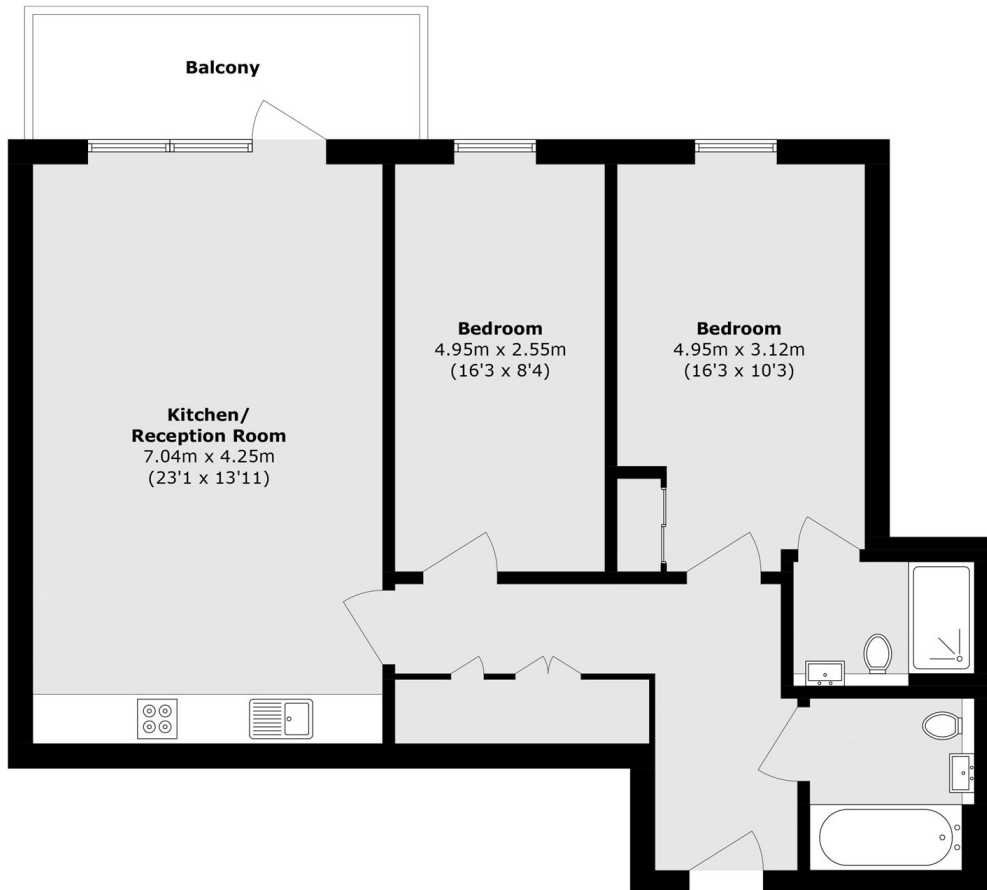
Lyon Road, HA1

£485,000

The property offers a spacious open-plan kitchen/reception room with modern integrated units, excellent natural light and direct access to a private balcony with exceptional views. Both bedrooms are generous doubles, with the principal bedroom benefiting from an ensuite shower room, while a stylish family bathroom completes the accommodation

Grove Court is ideally located on Lyon Road in central Harrow, close to Harrow Town Centre, shopping centres, cafés and restaurants. Harrow-on-the-Hill Station offers Metropolitan Line and National Rail links into London. The gated development also benefits from communal gardens, concierge, gym, lift access, secure underground parking and cycle storage.

- Fourth Floor • Private Balcony • Lift Access •
- Concierge Service • Residents' Gym • Underground Parking •



Fourth Floor

Total area (approx.): 80.1 sq. m (862.2 sq. ft)

Balcony area (approx.): 7.1 sq. m (76.4 sq. ft)

David Conway
020 8422 5222

Energy Rating: We aim to make our particulars both accurate and reliable. However they are not guaranteed; nor do they form part of an offer or contract. If you require clarification on any points then please contact us, especially if you're travelling some distance to view. Please note that appliances and heating systems have not been tested and therefore no warranties can be given as to their good working order.