



**30 Jessica House
Wandsworth High Street, London SW18 4RD
£2,550 Per Month**

Situated in the heart of Wandsworth, this modern two-bedroom, two-bathroom apartment is ideally located close to a wide range of local amenities and comes fully furnished.

Positioned on the second floor of the sought-after Jessica House development by Galliard, the apartment benefits from lift access, a secure underground parking space, and a daytime concierge service.

Residents are within easy walking distance of Southside Shopping Centre, an excellent selection of restaurants, trendy gastro pubs, and cafés. King George's Park is also nearby, offering peaceful green spaces, while the picturesque riverside walks along the River Thames provide the perfect setting for leisure and relaxation.

Excellent transport links are available, with Wandsworth Town mainline station approximately a 9-minute walk away and East Putney Underground station around a 13-minute walk from the development.

Council Tax: London Borough of Wandsworth – Band E.

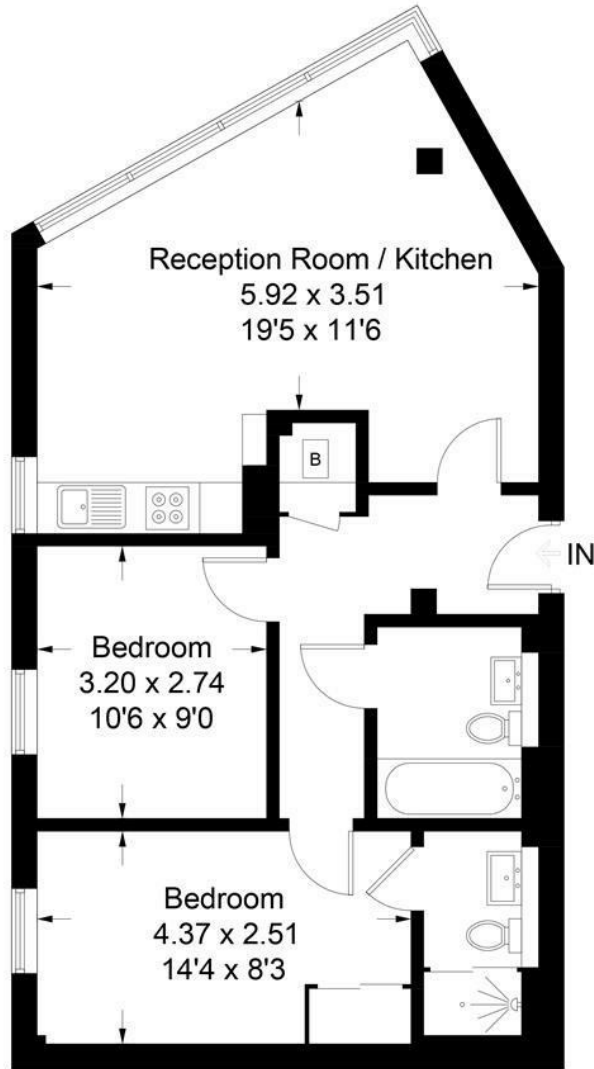






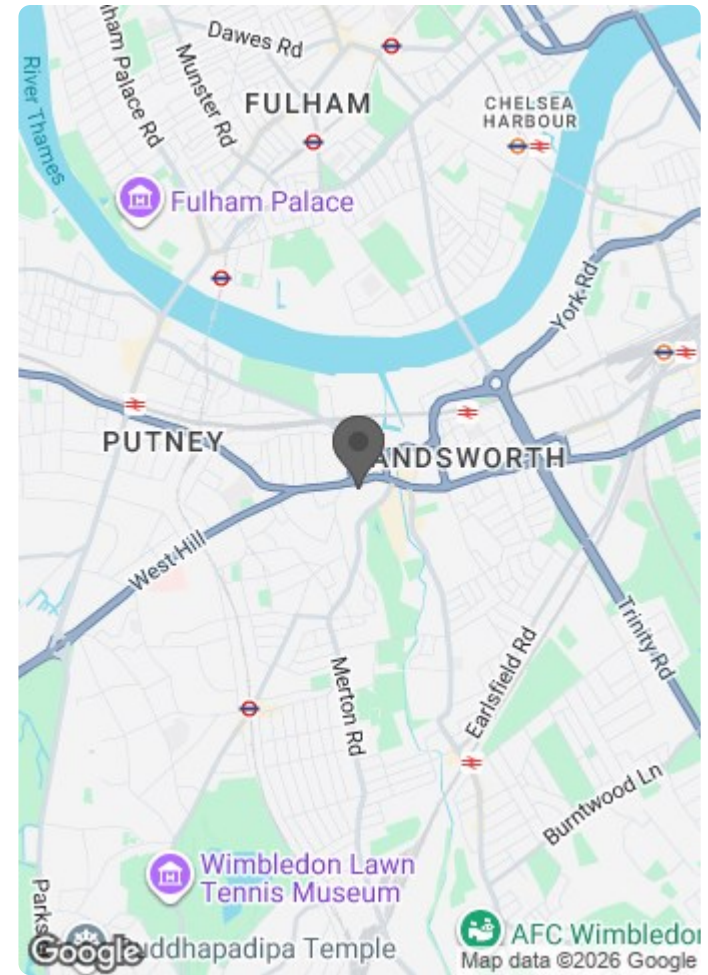
Jessica House, SW18

Approximate Gross Internal Area = 62.3 sq m / 670 sq ft



Second Floor

Illustration for identification purposes only, measurements are approximate, not to scale. (ID578512)



Energy Efficiency Rating		Current	Potential
Very energy efficient - lower running costs			
(92 plus) A			
(81-91) B			
(69-80) C			
(55-68) D			
(39-54) E			
(21-38) F			
(1-20) G			
Not energy efficient - higher running costs			
England & Wales		EU Directive 2002/91/EC	

Environmental Impact (CO ₂) Rating		Current	Potential
Very environmentally friendly - lower CO ₂ emissions			
(92 plus) A			
(81-91) B			
(69-80) C			
(55-68) D			
(39-54) E			
(21-38) F			
(1-20) G			
Not environmentally friendly - higher CO ₂ emissions			
England & Wales		EU Directive 2002/91/EC	