

# Fulmar House

Uxbridge • Middlesex • UB10 0FS  
PCM: £1,550 PCM



coopers  
est 1986

GROUND FLOOR  
691 sq.ft. (64.2 sq.m.) approx.

One bedroom apartment on the St Andrews Park Development offering a calm and relaxing feel of parkland surroundings whilst not compromising on location with St Andrews Park being next to Uxbridge Town Centre, Brunel University and a short drive to Stockley Business Park and Heathrow Airport.

Comprising of one bedroom, bathroom with shower, large fitted kitchen, lounge leading to winter garden. Benefits include gas central heating, double glazing, entry phone system, air circulation system and allocated parking.

One Double Bedroom

Close to Brunel University

Close to Stockley Park

Walking distance to Uxbridge high street

Allocated parking

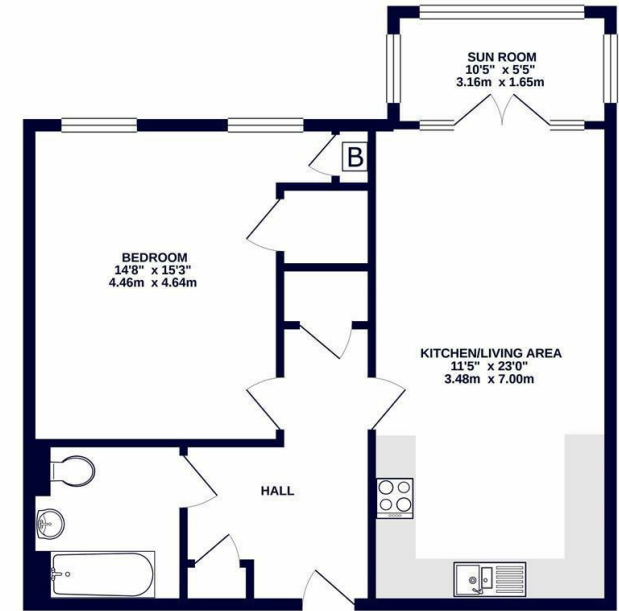
Ample storage space

Great transport links

Close to Heathrow Airport

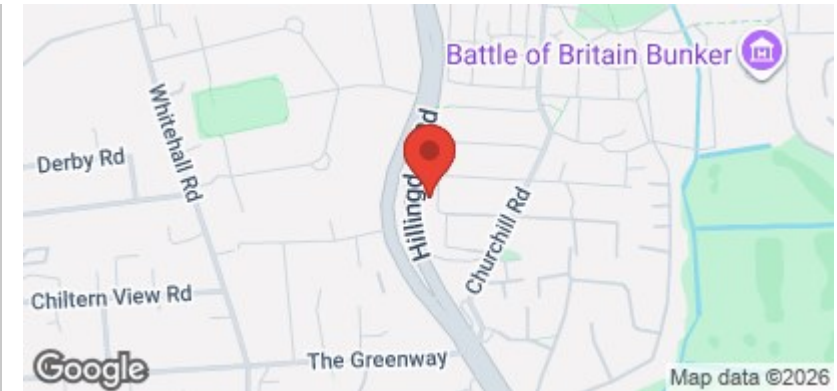
Easy access to M40

Council Tax Band C



TOTAL FLOOR AREA : 691 sq ft. (64.2 sq.m.) approx.

Whilst every attempt has been made to ensure the accuracy of the floorplan contained herein, measurements of doors, windows, stairs and any other items are approximate and no responsibility is taken for any error, omissions or mis-statement. This plan is for illustrative purposes only and should be used as such by any prospective purchaser. The services, systems and appliances shown have not been tested and no guarantee as to their operation or efficiency can be given. Made with Metropix ©2021



**Available Date**

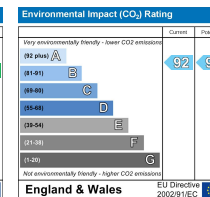
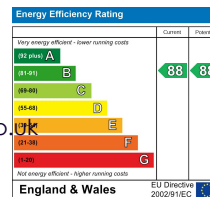
22nd June 2026

**01895 257 566**

**1 Vine Street, Uxbridge,  
Middlesex, UB8 1QE**

propertymanagement@coopersresidential.co.uk

**CoopersResidential.co.uk**



Important Notice: These particulars, whilst believed to be accurate are set out as a general outline only for guidance and do not constitute any part of an offer or contract. Intending purchasers should not rely on them as statements or representation of fact, but must satisfy themselves by inspection or otherwise has the authority to make or give any representation or warranty in respect of the property.

**coopers**  
est 1986