



St Whites Road Cinderford, GL14 3DG

£375,000

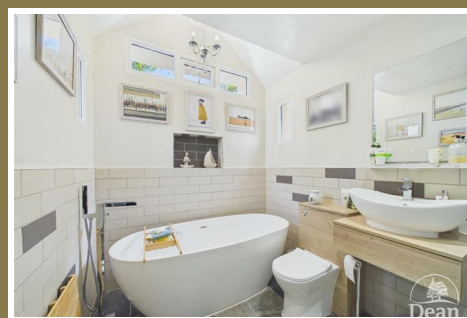
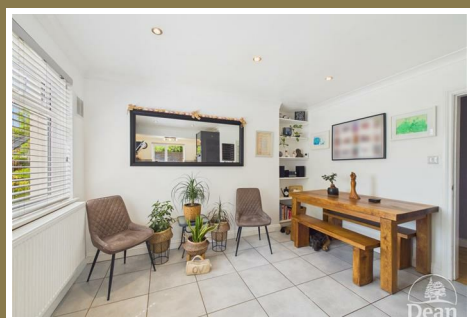


A spacious detached well appointed bungalow with three well-proportioned bedrooms, kitchen/diner, study, utility room and lounge. This property is ideal for families or those seeking a peaceful retreat. The spacious reception room provides a welcoming atmosphere, perfect for entertaining guests or enjoying quiet evenings at home.

The bungalow features a well-appointed bathroom, ensuring that all your daily needs are met with ease. One of the standout features of this property is the re-fitted kitchen with built in appliances.

The private gardens are well maintained with flower and shrub borders, lawned garden, various seating area's and patio's together with a comfortable summer house.

Surrounded by a friendly neighbourhood, this home is conveniently located near local amenities, making it easy to access shops, schools, and parks. Whether you are looking to downsize or seeking a new family home, this bungalow on St Whites Road presents an excellent opportunity for comfortable living in a desirable location. Don't miss the chance to make this lovely property your own.



Entrance Porch :

4'1" x 3'9" (1.27 x 1.15)

Entrance Hallway :

4'1" x 20'6" (1.27 x 6.27)

Wood flooring, wall lighting, radiator, alcove, access to loft space (with pull down wooden ladder, to overflow bedroom and storage room)

Living Room :

11'4" x 17'5" (3.46 x 5.33)

Wood flooring, book case, picture rail, two radiators, double glazed windows to front and side aspects.

Kitchen / Diner :

8'7" x 19'3" (2.63 x 5.88)

Kitchen - Recently re-fitted with matching wall and base cabinets, 1.5 bowl sink unit, eye level oven and grill, induction hob, extractor hood, integrated fridge, dishwasher, pan drawer, tiled floor, tiled splash backs, double glazed window to rear aspect.

Dining Area - Tiled floor, radiator, double glazed window to side aspect.

Side Hallway :

2'11" x 8'0" (0.89 x 2.46)

Double glazed doors to front and rear.

Snug :

8'9" x 8'0" (2.68 x 2.46)

Laminate flooring, radiator, double glazed windows to front and side aspects.

Utility Room :

9'10" x 6'2" (3.02 x 1.88)

Matching wall and base cabinets, plumbing for washing machine, space for tumble dryer, space for fridge / freezer, radiator, double glazed windows to front and side aspects.

Bedroom 1 :

11'10" x 10'1" (3.62 x 3.08)

Radiator, double glazed window to front aspect.

Bedroom 2 :

10'0" x 8'4" (3.07 x 2.56)

Fitted wardrobe, built in cupboard, radiator, double glazed window to side aspect. This room is currently being used as a dressing room.

Bedroom 3 :

11'10" x 8'11" (3.62 x 2.72)

Radiator, double glazed window to rear aspect.

Bathroom :

6'7" x 9'6" (2.02 x 2.91)

Re-fitted with a White suite comprising of

freestanding bath and free standing mixer taps, separate shower cubicle, combined WC and vanity unit. rustic oak counter top with gloss oval basin, towel rail, tiled floor with under floor heating, tiled walls, double glazed window to side and rear aspects.

Attic Rooms :

Pull down wooden stairs, one room is used for storage and the other is used as an occasional bedroom, radiator and double glazed window.

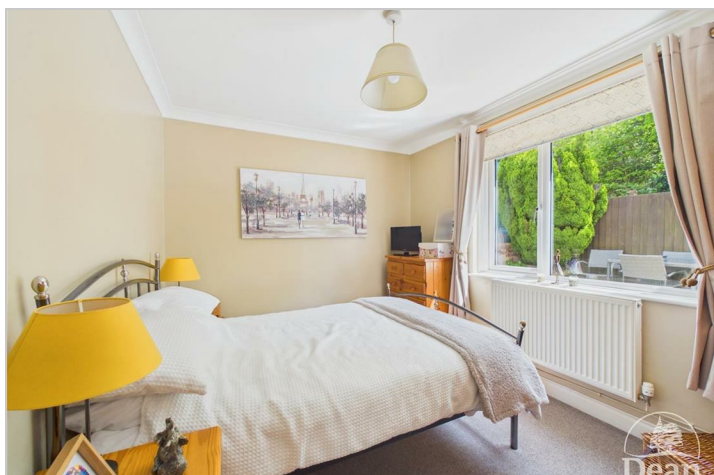
Outside :

Electric gates open onto the driveway providing off road parking and leading to the detached garage.

Private hedge to the front and gateway to the well maintained gardens having various patio seating area's, mature shrubs and flower borders, lawn to the side and summer house with two sheds and electricity supply. To the rear is a private deck leading to the rear entrance.

Detached Garage

Up and over door, power and light.



Consumer Notes: Dean Estate Agents Ltd have prepared the information within this website/brochure with care and co-operation from the seller. It is intended to be indicative rather than definitive, without a guarantee of accuracy. Before you act upon any information provided, we request that you satisfy yourself about the completeness, accuracy, reliability, suitability or availability with respect to the website or the information, products, services, or related graphics contained on the website for any purpose.

These details do not constitute any part of any Offer, Contract or Tenancy Agreement.

Photographs used for advertising purposes may not necessarily be the most recent photographs, although every effort is made to update photographs at the earliest opportunity. Any reliance you place on such information is therefore strictly at your own risk. All photographic images are under the ownership of Dean Estate Agents Ltd and therefore Dean Estate Agents retain the copyright.

You must obtain permission from the owner of the images to reproduce them.

Tenanted Property – we are not always able to show the most recent condition of a property due to tenants' privacy and we may choose to show the photographs of the property when it was last vacant to at least allow clients some idea of the internal condition. Therefore, we would of course, urge you to view before making any decisions to purchase or rent the property and before any costs.

Energy Performance Certificates are supplied to us via a third party and we do not accept responsibility for the content within such reports.

PRC Certificates – Some ex-local authority properties have been repaired in recent years using the PRC Scheme wherein a certificate has been produced by a qualified property engineer. This certificate does not imply the suitability for a mortgage approval and you must satisfy yourself of the work carried out that may meet your lenders criteria.

As with leasehold property or new build development sites, you are likely to be responsible for a contribution to management charges and/or ground rent or a contribution to the development service charge. Please enquire at the time of viewing.

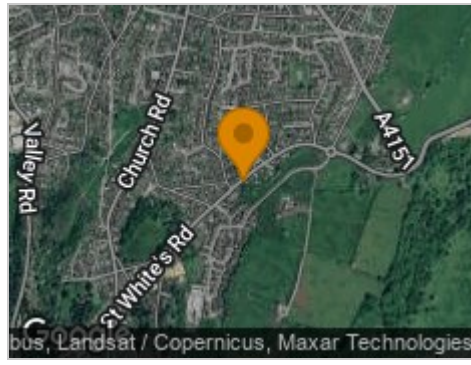
You may also incur fees for items such as leasehold packs and, in addition, you will also need to check the remaining length of any lease before you complete a mortgage application form.

Please ask a member of our team for any help required before committing to purchase a property and incurring expense.

Road Map



Hybrid Map



Terrain Map



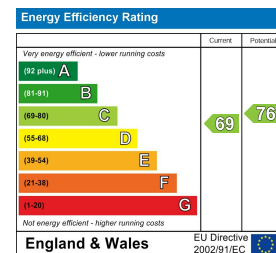
Floor Plan



Viewing

Please contact our Cinderford Office on 01594 825574 if you wish to arrange a viewing appointment for this property or require further information.

Energy Efficiency Graph



These particulars, whilst believed to be accurate are set out as a general outline only for guidance and do not constitute any part of an offer or contract. Intending purchasers should not rely on them as statements of representation of fact, but must satisfy themselves by inspection or otherwise as to their accuracy. No person in this firm's employment has the authority to make or give any representation or warranty in respect of the property.