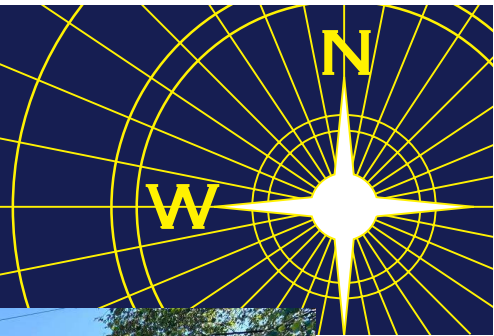


# NEVIN & WELLS

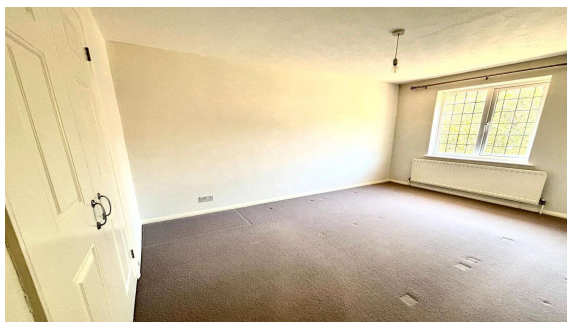
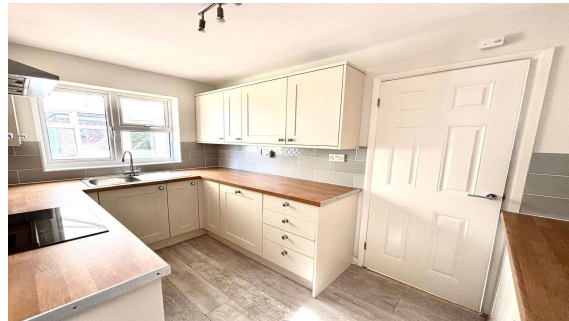
*Residential*

Established 2002



**Eton Court, Staines-upon-Thames, TW18 2AF**

**£465,000 F/H**



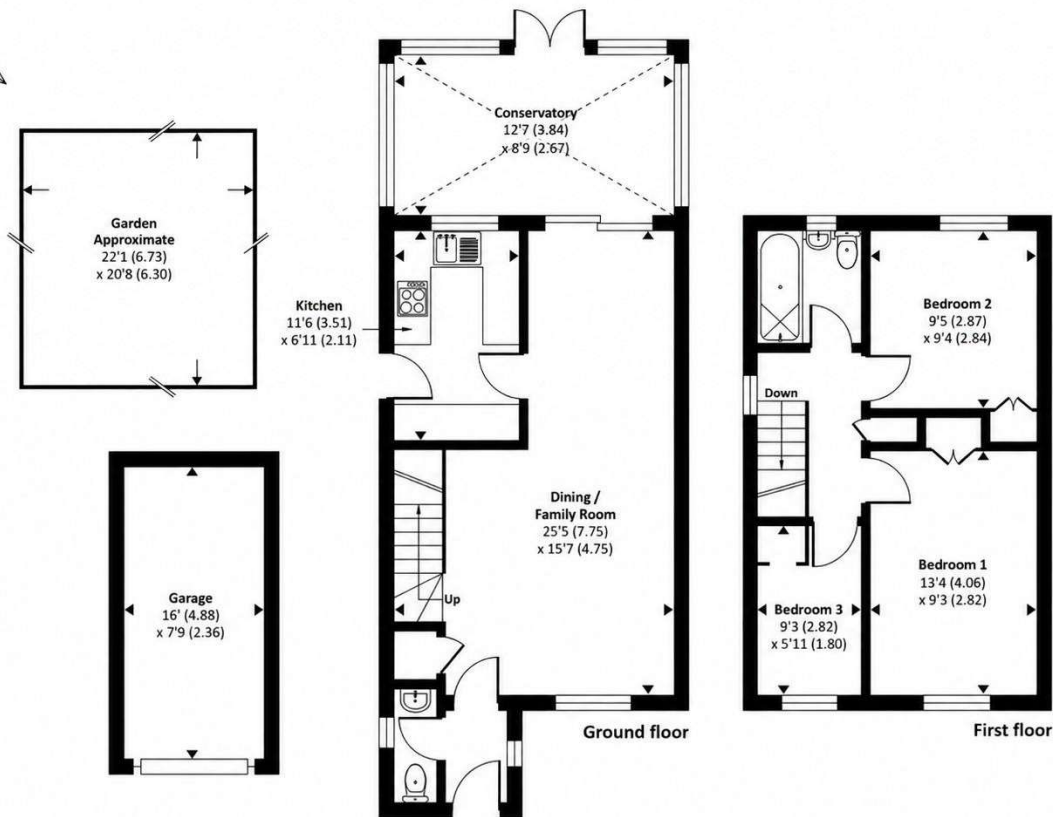
A superbly presented three bedroom home, minutes away from the mainline station and High Street. This chain free property offers open plan lounge/diner, modern kitchen and bathroom, conservatory and garage in adjacent block. Access to brand new leisure centre, local schools and scenic river Thames towpath walks is also close at hand. The M25, A30 and Heathrow Airport are a few minutes drive away.

# Eton Court, Staines-upon-Thames, Middlesex, TW18 2AF

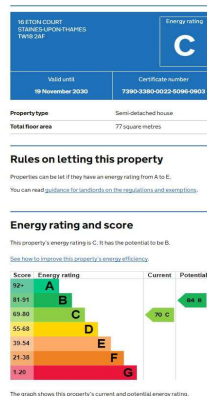
## FLOOR PLAN

Approximate Area = 1097 sq ft / 102 sq m (includes garage)

For identification only - Not to scale



## EPC



### GARAGE:

Single garage in adjacent block

### GARDENS:

Neatly landscaped to rear and front

### COUNCIL TAX BAND:

E - Spelthorne Borough Council

### VIEWINGS:

By appointment with the clients selling agents,  
Nevin & Wells Residential on 01784 437 437 or visit  
[www.nevinandwells.co.uk](http://www.nevinandwells.co.uk)



All measurements are approximate. Nevin & Wells Residential have not tested any systems or appliances.