



Sellincourt Road, SW17

£525,000

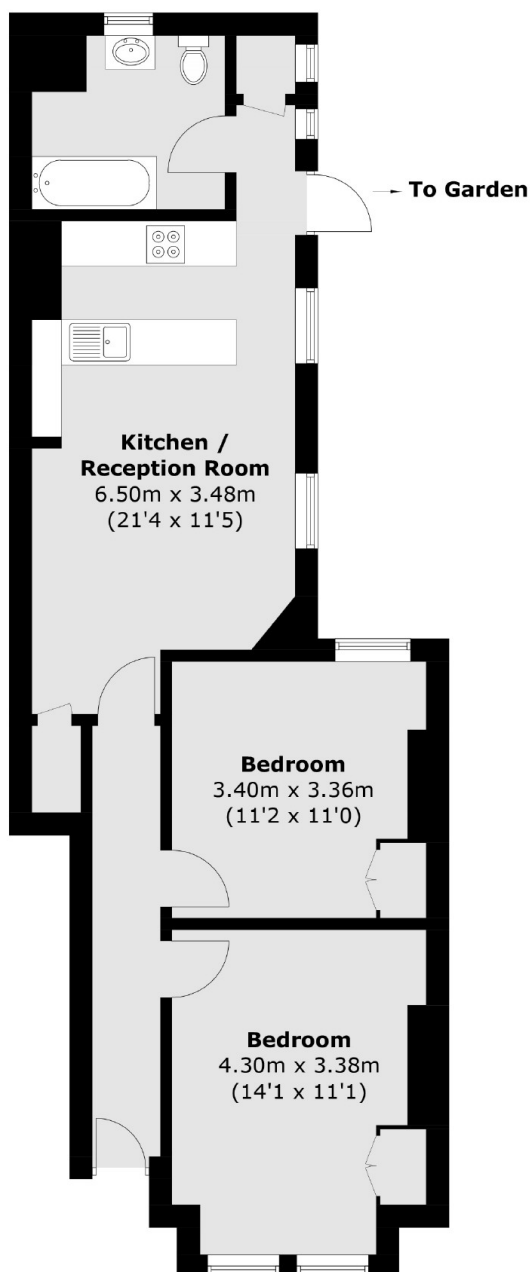
A stunning example of a beautiful ground floor maisonette in the heart of Tooting with an immaculate interior benefitting from an open plan kitchen/reception room, two spacious double bedrooms, a stylish three piece bathroom and a private landscaped garden. The property also benefits from a long lease.

Sellincourt Road is positioned enviably off the vibrant Tooting High Street, with its wide array of bars and restaurants. Tooting Broadway tube station and Tooting overground are only a short distance away.

Features

- Two Double Bedrooms
- Private Garden
- Own Front Door
- Newly Extended Lease
- Open-Plan Kitchen/Reception Room
- Stylish Interior

Sellincourt Road, London, SW17



Total area (approx.): 63.2 sq. m (680.3 sq. ft)

Dexters

Tooting
48 Tooting High Street
London
SW17 0RG
Sales
020 8545 8582

Energy Rating: C. We aim to make our particulars both accurate and reliable. However they are not guaranteed; nor do they form part of an offer or contract. If you require clarification on any points then please contact us, especially if you're traveling some distance to view. Please note that appliances and heating systems have not been tested and therefore no warranties can be given as to their good working order.

 **RICS** | Regulated
Estate Agent
and Letting Agent

[dexters.co.uk](https://www.dexters.co.uk)