


est 1979

 Jeremy
Leaf & Co.



Finchley Lodge, Flat 2 Gainsborough Road, London, N12 8AL

£300,000

- Open Plan Kitchen / Reception
- Within 0.2 Miles of Tube Station
- One Bedroom
- Bathroom
- Council Tax Band B
- Service charge - £1,700 p.a

863 High Road, London, N12 8PT
020 8446 4295

property@jeremyleaf.co.uk
<https://www.jeremyleaf.co.uk/>

Flat 2 Gainsborough Road, London N12 8AL

A one bedroom bedroom ground floor flat conveniently located for North Finchley's shopping and transport amenities and within 0.2 miles of Woodside Park tube station. Ideal for first time buyers or the rental market. 150 year lease.



1



1



1



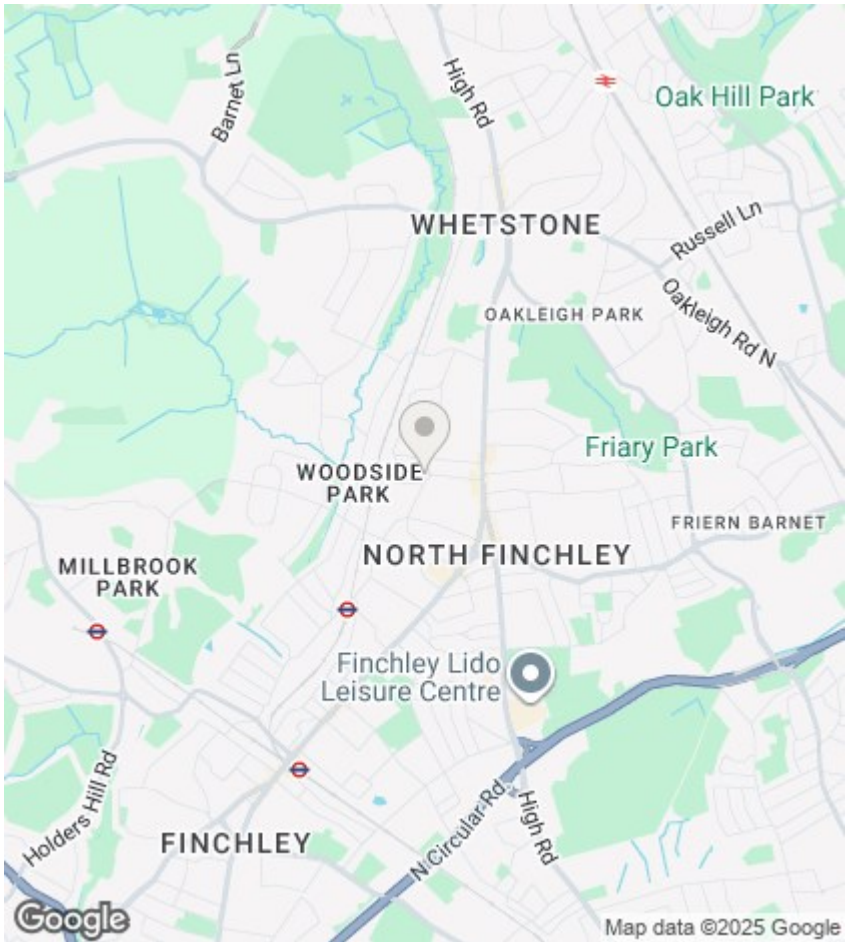
E

Council Tax Band: C



Full Description

A one bedroom bedroom ground floor flat conveniently located for North Finchley's shopping and transport amenities and within 0.2 miles of Woodside Park tube station. Ideal for first time buyers or the rental market. 150 year lease.



Directions

Viewings

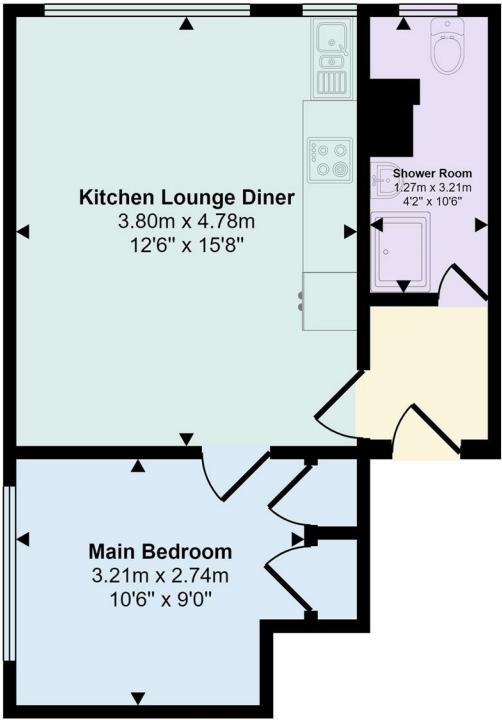
Viewings by arrangement only. Call 020 8446 4295 to make an appointment.

EPC Rating:

E

Energy Efficiency Rating		
	Current	Potential
Very energy efficient - lower running costs		
(92 plus) A		
(81-91) B		
(69-80) C		79
(55-68) D		
(39-54) E	49	
(21-38) F		
(1-20) G		
Not energy efficient - higher running costs		
England & Wales		EU Directive 2002/91/EC

35 sq m / 380 sq ft



Floorplan