



86 Bushey Wood Road, Sheffield, S17 3QB

Saxton Mee

86 Bushey Wood Road

Guide Price

£700,000

GUIDE PRICE: £700,000-£725,000

A fantastic opportunity to purchase this bright, spacious and extended five-bedroom semi-detached family home, ideally located in the highly sought-after suburb of Dore. Offering generous accommodation across three floors, this superb property is perfectly suited to a growing family and enjoys a fabulous large rear garden, driveway and garage.

The property is well placed for a wide range of local amenities, highly regarded schools, excellent transport links, the shops, cafés and amenities of Dore Village, and easy access to the stunning Peak District National Park.

The accommodation briefly comprises a welcoming entrance hallway, a bay-windowed living room to the front, a generous family room, and an impressive extended open-plan breakfast kitchen and dining area to the rear, creating a wonderful family space ideal for both everyday living and entertaining. There is also a useful utility room, downstairs WC and integral garage.

To the first floor are four well-proportioned bedrooms, including a spacious principal bedroom with en-suite shower room, together with a family bathroom. The second floor provides a further fifth bedroom with its own shower room/WC, offering flexible accommodation ideal for an older child, guest room or home office.

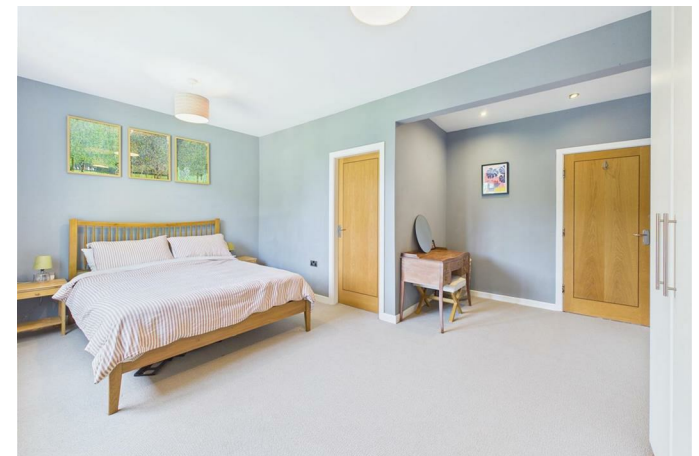
Externally, one of the standout features of this excellent home is the substantial rear garden, providing plenty of space for children, entertaining and outdoor enjoyment. To the front, there is a driveway providing off-road parking and access to the garage.

This is a rare opportunity to purchase a substantial family home in one of Sheffield's most desirable residential locations, combining space, versatility and a superb setting close to excellent schools, village amenities, commuter links and beautiful countryside.

Early viewing is highly recommended.



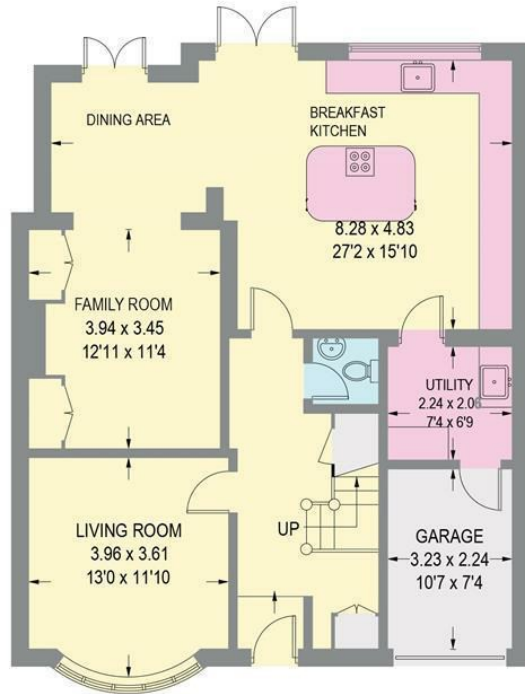
- Bright, spacious and extended five-bedroom semi-detached family home
- Sought-after Dore location close to excellent local amenities and Dore Village
- Well placed for highly regarded local schools and excellent transport links
- Easy access to the Peak District National Park
- Generous accommodation arranged over three floors
- Bay-windowed living room, separate family room and superb open-plan breakfast kitchen/dining area
- Principal bedroom with en-suite, plus a further family bathroom and second floor shower room
- Large rear garden, driveway providing off-road parking and integral garage



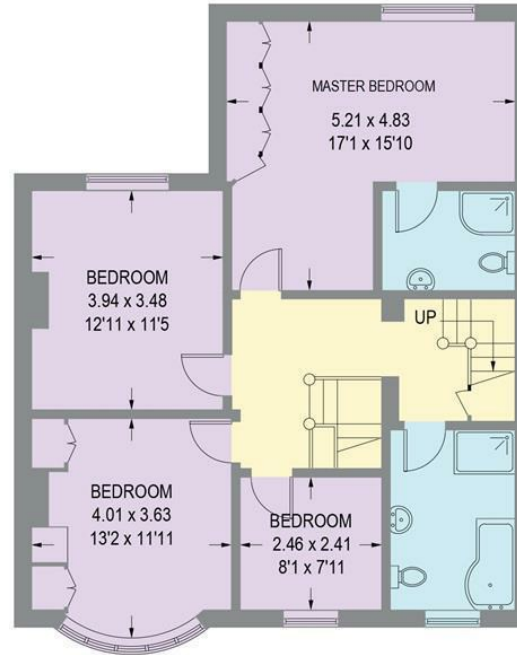


86 BUSHEY WOOD ROAD

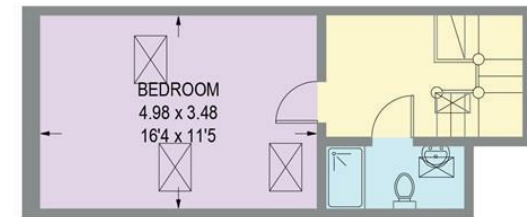
APPROXIMATE GROSS INTERNAL AREA = 202.9 SQ M / 2184 SQ FT



GROUND FLOOR (INCLUDING GARAGE)
91.4 SQ M / 984 SQ FT



FIRST FLOOR = 82.4 SQ M / 887 SQ FT



SECOND FLOOR = 29.1 SQ M / 313 SQ FT

Illustration for identification purposes only, measurements are approximate, not to scale.

While we endeavour to make our sales particulars fair, accurate and reliable, they are only a general guide to the property and, accordingly, if there is any point, which is of particular importance to you, please contact the relevant office. The Agents have not tested any apparatus, equipment, fittings or services and so cannot verify they are in working order. The buyer is advised to obtain verification. Please note all the measurement details are approximate and should not be relied upon as exact. All plans, floor plans and maps are for guidance purposes only and are not to scale. Under no circumstances should they be relied upon as exact or for use in planning carpets and other such fixtures, fittings or furnishings. YOUR HOME IS AT RISK IF YOU DO NOT KEEP UP REPAYMENTS ON A MORTGAGE OR OTHER LOAN SECURED ON IT. 'A Life Assurance policy may be requested.' 'Written Quotations of credit terms available on request.'

Banner Cross
T: 0114 268 3241
E: bannercross@saxtonmee.co.uk
www.saxtonmee.co.uk

Hathersage
T: 01433 650009
E: hathersage@saxtonmee.co.uk

Bakewell
T: 01629 815307
E: bakewell@saxtonmee.co.uk

Matlock
T: 01629 828250
E: matlock@saxtonmee.co.uk

