



HW

ESTATE AGENTS

Somerset Court, Wilbury Villas

£220,000



Somerset Court, Hove

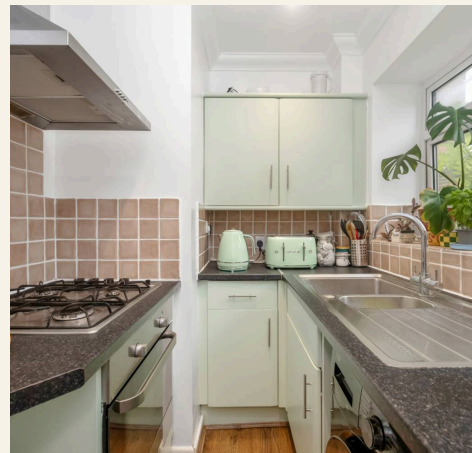
An exceptional one-bedroom flat with stylish interiors, Outdoor space, in a desirable area close to amenities and transport links, offering contemporary living with indoor-outdoor appeal. Council Tax band: B

Tenure: Leasehold

EPC Energy Efficiency Rating: C

EPC Environmental Impact Rating: C

- GUIDE PRICE £220,000 - £240,000
- Outside Space
- Decking Area
- Open plan living area
- Modern kitchen
- Abundant natural light
- Sliding doors to garden
- Wooden flooring
- Modern bathroom



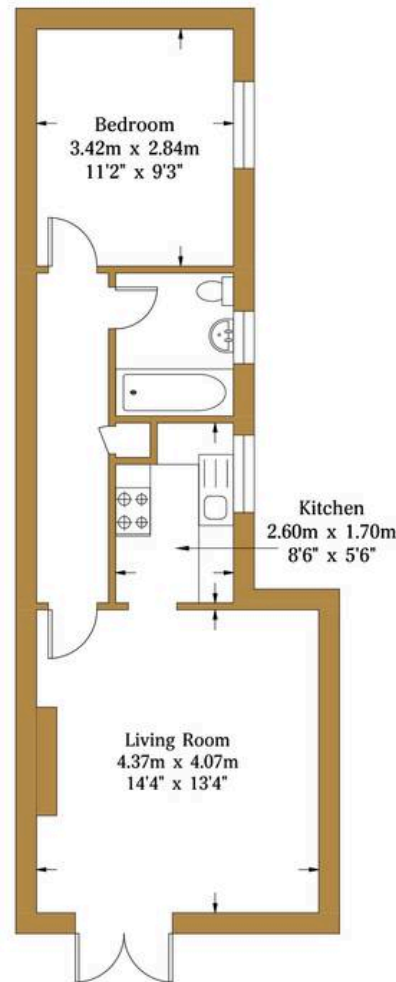


Wilbury Villas

Approx. Gross Internal Area:- 41.59 sq.m. 447.67 sq.ft.

HW

HAWKINS WATTS WINNARD



Lower Ground Floor
Approximate Floor Area
447.67 sq ft
(41.59 sq m)



Illustration for identification purposes only, measurements are approximate, not to scale.

© hwstateagents



HW Estate Agents

HW Estate Agents, 80 Goldstone Villas, Hove - BN3 3RU

01273 359000 · hove@hwestateagents.co.uk · www.hwestateagents.co.uk

HW

ESTATE AGENTS