



## Cumberland Mansions

George Street, Marylebone, W1H 5ZB

£1,400 Per Week

A bright and spacious four double bedroom Top/5th floor apartment with high ceilings covering almost 1400 sq/ft of within a traditional red brick mansion block moments from Marble Arch, Oxford Street, Marylebone, Connaught Village and the open fields of Hyde Park.

This fine property comprises of:- Excellent sized reception room, large fitted kitchen (door to small balcony), affording four double bedrooms, two bathrooms (1 x en-suite) and guest WC.

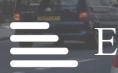
This large flat also benefits from having wooden flooring throughout, neutral decorated walls and secondly glazing, lift access, within easy walking distance to all of the local shops and transport links.

The flat is offered FURNISHED and is available from MID of June 2026.

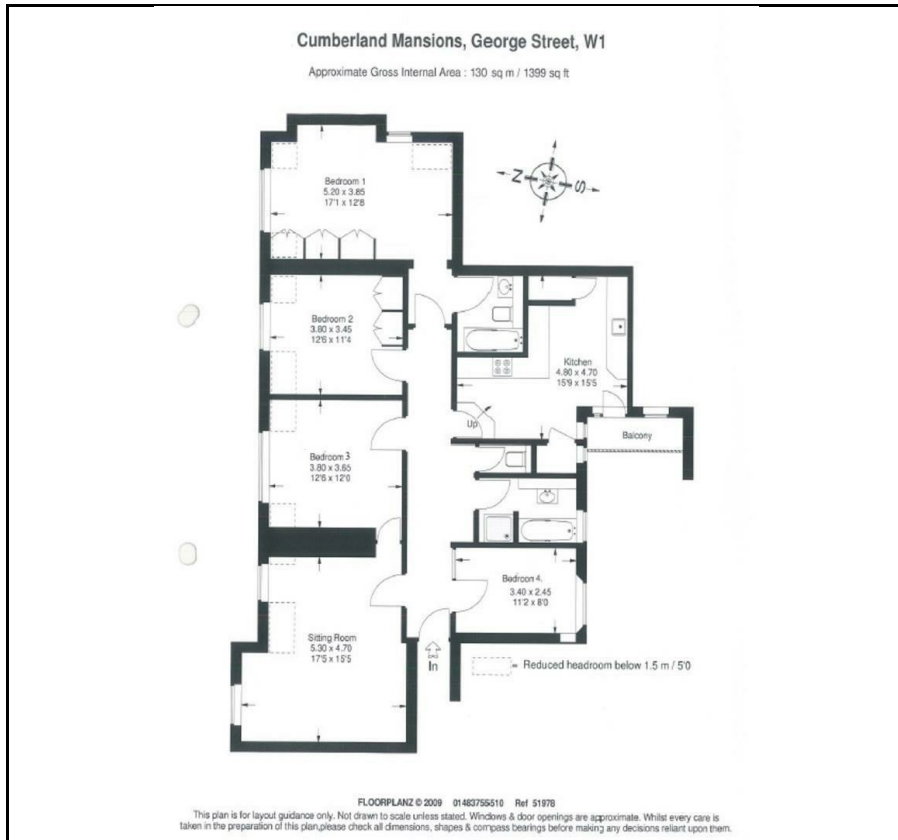
- Relaxing Reception room
- Four Double Bedrooms
- Two Bathrooms
- Guest WC
- Large separate kitchen/with breakfast area
- Wooden Flooring
- Freshly decorated
- Lift and caretaker
- Great central location

### Viewing

Please contact our Messila Residential Office on 020 7586 6699 if you wish to arrange a viewing appointment for this property or require further information.



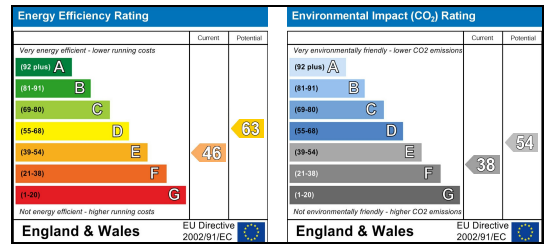
## Floor Plan



## Area Map



## Energy Efficiency Graph



These particulars, whilst believed to be accurate are set out as a general outline only for guidance and do not constitute any part of an offer or contract. Intending purchasers should not rely on them as statements of representation of fact, but must satisfy themselves by inspection or otherwise as to their accuracy. No person in this firm's employment has the authority to make or give any representation or warranty in respect of the property.

## Messila Residential

137 Park Road, London, NW8 7HT

T: 020 7586 6699 E: regentspark@messilaresidential.com W: messilaresidential.com