



**JOWEBSTER**

*Apartment B23*  
The Montevetro Building, SW11



### Property Attributes

- Reception Room with vast views over the River Thames
- Two large Bedrooms (One En Suite Bathroom)
- Family Bathroom
- 24 Hour Concierge/Security
- Gym
- Tennis Court
- Secure underground parking for one car



### Terms

- Price: Offers in Excess of £1,000,000
- Borough: London Borough of Wandsworth
- Tenure: Share of Freehold
- Service Charge: Approx. £15,746 per annum
- Ground Rent: Peppercorn
- Council Tax Band: G

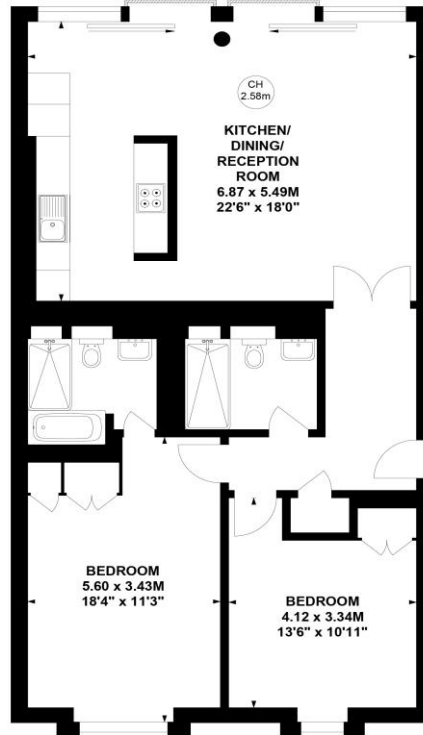


# Montevetro Building, SW11

Approximate gross internal area

93.5 sq m / 1006 sq ft

Key :  
CH - Ceiling Height



## Second Floor

This plan is not to scale and must be used as layout guidance only. All measurements and areas are approximate and should not be relied upon to provide accurate information. This plan must not be relied upon when making property valuations, design considerations or any other such relevant decisions. We accept no responsibility or liability (whether in contract, tort or otherwise) in relation to any loss whatsoever arising from or in connection with any use of this plan or the adequacy, accuracy or completeness of it or any information within it.

+44 (0) 20 7349 7055  
sales@jowebster.com

### Misdescription Act

We wish to advise prospective purchasers that these sales particulars are believed to be correct, but their accuracy is in no way guaranteed, nor do they form any part of contract. We have not carried out a detailed survey nor tested the services, appliances or specific fittings. Measurements are approximate.