



Cherry Tree Close, Mundford, Thetford, IP26 5JD

welcome to

Cherry Tree Close, Mundford, Thetford

NO ONWARD CHAIN! A spacious two bedroom DETACHED BUNGALOW set within a POPULAR NORFOLK VILLAGE, offering a GENEROUS PLOT, driveway, GARAGE and SUNNY LOW MAINTENANCE GARDEN, with EXCELLENT POTENTIAL TO MODERNISE throughout!

Summary

Situated within the ever popular Norfolk village of Mundford, this detached bungalow enjoys a convenient setting with a wide range of village amenities right on the doorstep, including a well regarded pub, village shop, primary school and traditional fish and chip shop. The larger market towns of Brandon, Downham Market and Swaffham are all within easy reach, providing further shopping, schooling and transport connections.

Offered to the market with no onward chain, the property sits on a generous plot and presents an excellent opportunity for buyers seeking a bungalow with space and potential.

To the front, the home enjoys an attractive and low maintenance garden alongside a lengthy driveway providing ample off-road parking, as well as a garage.

Internally, the accommodation is spacious and versatile, offering great scope for modernisation. A welcoming entrance hall leads to a bright and spacious lounge with plenty of room for dining, creating a sociable space for relaxing or entertaining. The property also benefits from a well equipped kitchen, two double bedrooms, an accessible shower room and a separate W.C.

Outside, the bisected rear garden continues the theme of practicality and enjoyment. Designed with low maintenance in mind, it offers a sunny outdoor space ideal for relaxing, while the raised beds towards the rear will particularly appeal to keen gardeners.

Offering space, potential and a desirable village setting, viewing is highly recommended!

The Accommodation

Entrance door to:

Entrance Hall

With door to side, built in airing cupboard and radiator.

Living / Dining Room

With fireplace, two windows to front and two radiators.

Kitchen

With a range of fitted kitchen units at wall and base level with work surface over, inset sink unit with mixer tap and drainer over, space and plumbing for washing machine, space and plumbing for dishwasher, space and point for cooker, space for fridge/freezer, door and window to side and radiator.

Bedroom One

With window to rear and radiator.

Bedroom Two

With window to rear and radiator.

Shower Room

With shower cubicle with shower attachment over, wash hand basin with mixer tap over, window to side and heated towel rail.

Separate W.C

With W.C, window to side and radiator.





Outside

Front Garden

To the front of the property, there is a front garden and a driveway, providing plenty of space for off road parking and access to:

Garage

Rear Garden

To the rear, the enclosed rear garden is low maintenance and has a paved patio area, garden shed and some shrub and floral borders alongside some raised beds at the rear.

Agents Note

Please note that the sale of this property is subject to Grant of Probate. Please contact the Branch or your legal representative for further information around any timescales this may involve.



check out more properties at williamhbrown.co.uk



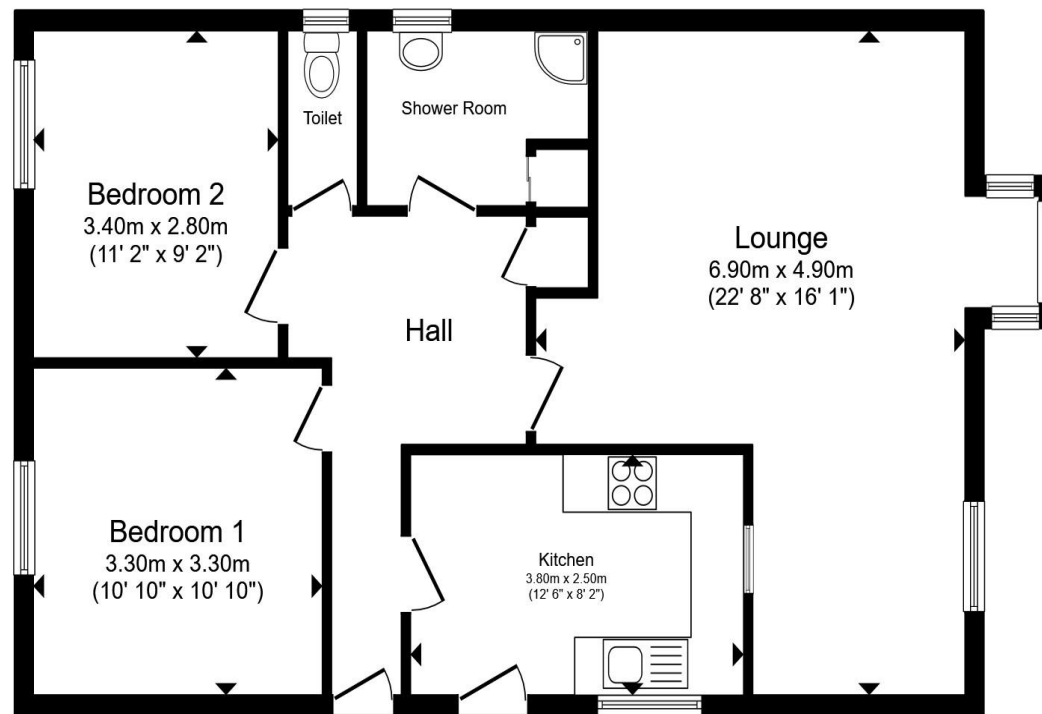
welcome to

Cherry Tree Close, Mundford, Thetford

- Detached Bungalow, Sold with No Chain!
- Popular Norfolk Village Location
- Generous Plot with Driveway & Garage to Front
- Spacious Lounge with Space for Dining
- Accessible Shower Room and Separate W.C
- Low Maintenance Garden to Rear
- Excellent Scope to Modernise Throughout
- Two Double Bedrooms

Tenure: Freehold EPC Rating: Awaited

£240,000



Floor Plan

Total floor area 74.3 m² (800 sq.ft.) approx

This floor plan is for illustrative purposes only. It is not drawn to scale. Any measurements, floor areas (including any total floor area), openings and orientation are approximate. No details are guaranteed, they cannot be relied upon for any purpose and they do not form part of any agreement. No liability is taken for any error, omission or misstatement. A party must rely upon its own inspection(s). Powered by www.propertybox.io



check out more properties at williamhbrown.co.uk



Property Ref:
BRD111200 - 0001

1. MONEY LAUNDERING REGULATIONS Intending purchasers will be asked to produce identification documentation at a later stage and we would ask for your co-operation in order that there is no delay in agreeing the sale. 2. These particulars do not constitute part or all of an offer or contract. 3. The measurements indicated are supplied for guidance only and as such must be considered incorrect. Potential buyers are advised to recheck measurements before committing to any expense. 4. We have not tested any apparatus, equipment, fixtures or services and it is in the buyers interest to check the working condition of any appliances. 5. Where an EPC, or a Home Report (Scotland only) is held for this property, it is available for inspection at the branch by appointment. If you require a printed version of a Home Report, you will need to pay a reasonable production charge reflecting printing and other costs. 6. We are not able to offer an opinion either written or verbal on the content of these reports and this must be obtained from your legal representative. 7. Whilst we take care in preparing these reports, a buyer should ensure that his/her legal representative confirms as soon as possible all matters relating to title including the extent and boundaries of the property and other important matters before exchange of contracts.

William H Brown is a trading name of Sequence (UK) Limited which is registered in England and Wales under company number 4268443, Registered Office is Cumbria House, 16-20 Hockliffe Street, Leighton Buzzard, Bedfordshire, LU7 1GN. VAT Registration Number is 500 2481 05.

 william h brown



01842 811058



Brandon@williamhbrown.co.uk



18-20 High Street, BRANDON, Suffolk, IP27
0AQ



williamhbrown.co.uk