



65346345 Caversham Road, Duxford Tower, Colindale, NW9 5QF
£2,020 Per month





65346345 Caversham Road, Duxford Tower, Colindale, NW9 5QF

£2,020 Per month

Modern Apartment | Rooftop Terrace | Gym, Swim & Spa | Co-Working Lounge | Gated Parking | Landscaped Gardens | Minutes from Colindale Station.

Experience modern living with access to a range of exclusive resident facilities designed for comfort, convenience, and community. Enjoy a residents-only gym, communal workspaces, and a coffee shop just steps from your door. The development also offers a secure parcel room, on-site management team, and gated parking for peace of mind.

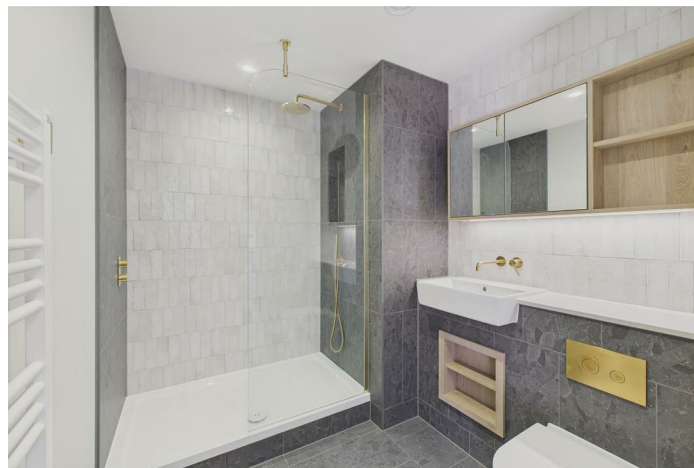
Unwind on the roof terrace with BBQ areas, or take advantage of access to a private swimming pool - all designed to elevate your everyday living.

Ideal for professionals and families seeking contemporary living with excellent connectivity and lifestyle perks.

Description



Situation



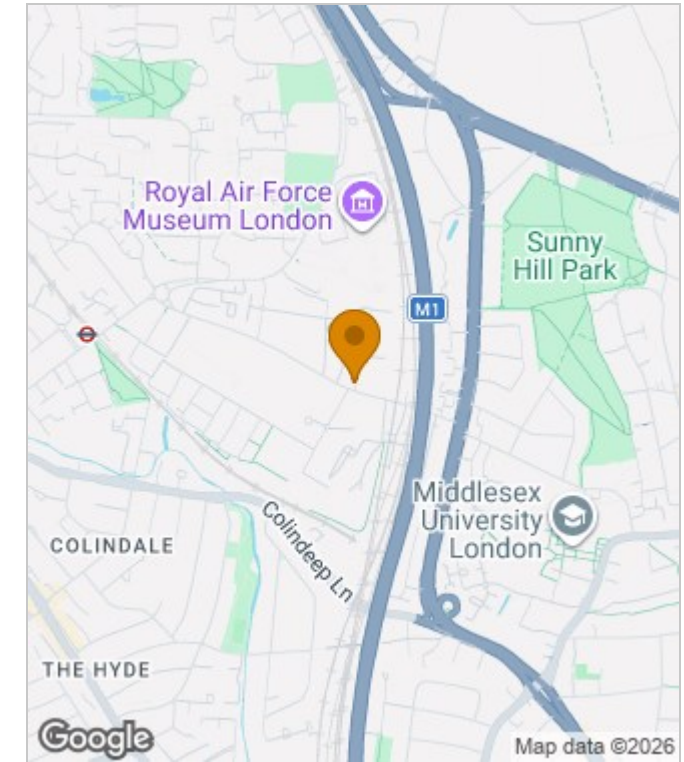
Furnished
Council Tax Band: B
Available:

Floor Plans

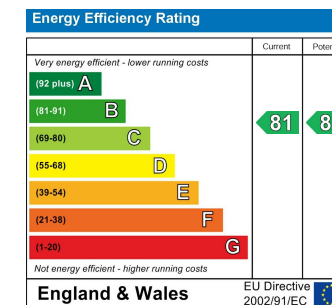


<p>The Draper</p> <p>- Colindale</p>	<p>Details</p> <p>Property Type Apartment</p> <p>Bedrooms x1</p> <p>Bathrooms x1</p>		<p>Building amenities</p> <p>In-House Gym</p> <p>Central communal garden</p> <p>Large co-working spaces</p> <p>Parcel collection</p> <p>Free high-speed Wi-Fi</p> <p>Access to swim and spa</p>		<p>Approx. total area</p> <p>51.10 m²</p> <p>550 ft²</p>	
	<p>Measurements are approximate and not to scale in this floor plan. Provided for illustrative purposes.</p>					

Area Map



Energy Performance Graph



These particulars, whilst believed to be accurate are set out as a general outline only for guidance and do not constitute any part of an offer or contract. Intending purchasers should not rely on them as statements of representation of fact, but must satisfy themselves by inspection or otherwise as to their accuracy. No person in this firm's employment has the authority to make or give any representation or warranty in respect of the property.