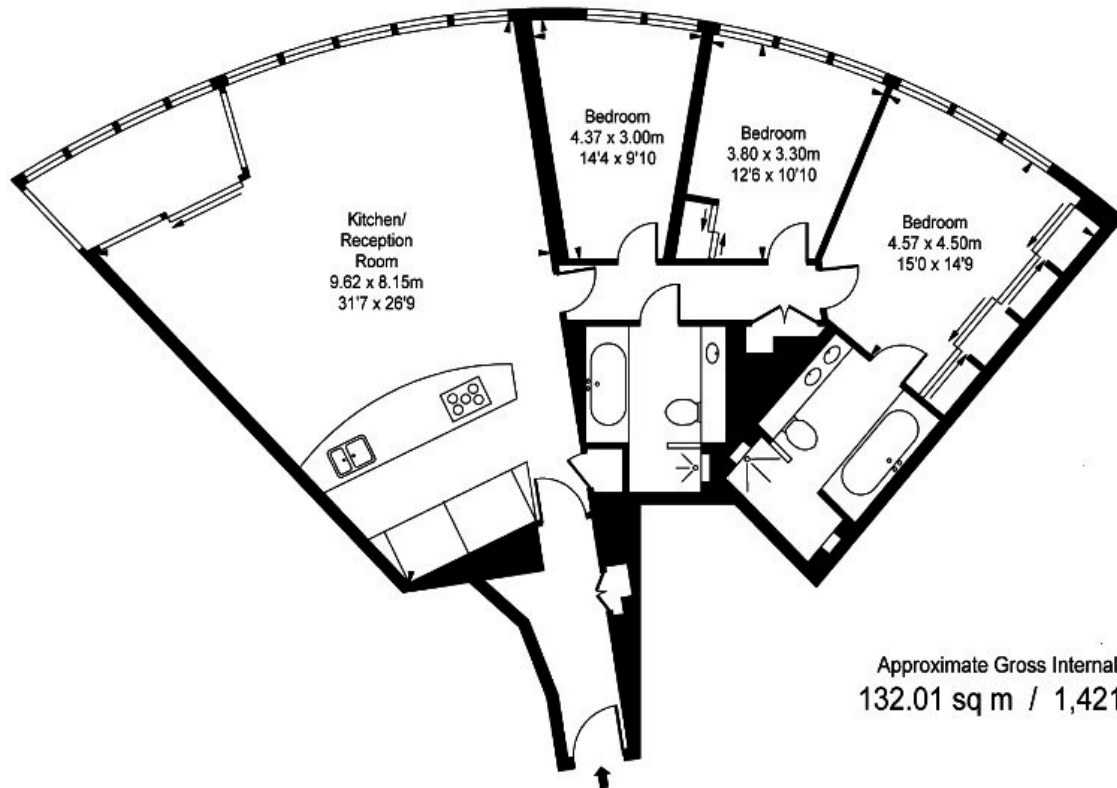




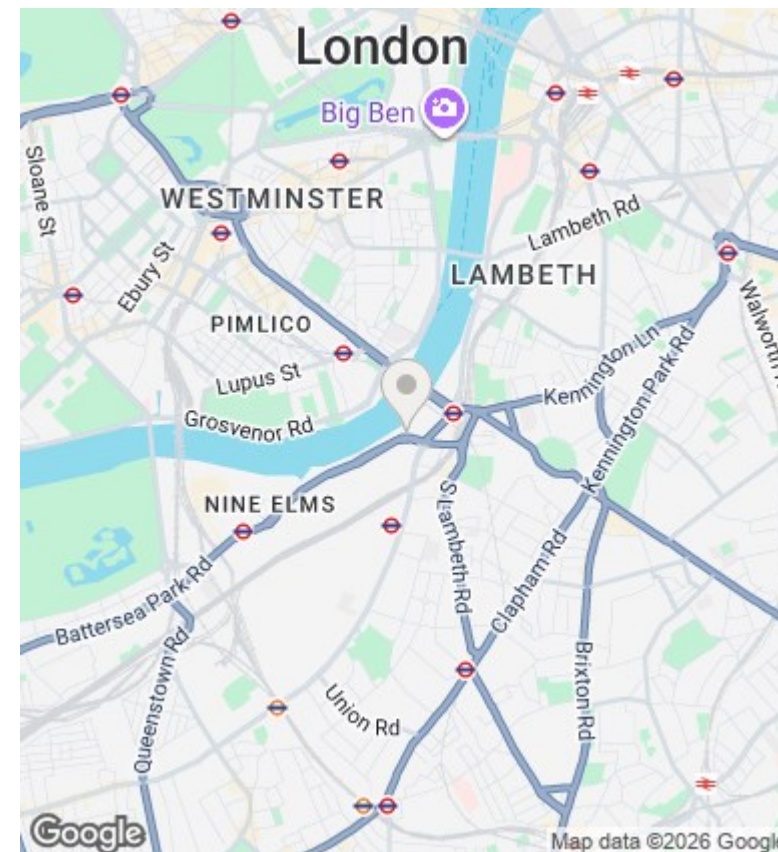
## The Tower, 1 St George Wharf, Vauxhall SW8 2DU

£7,700 Per Month

- video viewing available
- gym and spa
- swimming pool with River views
- meeting room / dining room
- cinema
- valet parking
- under floor heating and air cooling
- 24 hour concierge
- smart home system
- direct River views



Approximate Gross Internal Area  
132.01 sq m / 1,421 sq ft



### Viewings

Viewings by arrangement only.  
Call 02077225022 to make an appointment.

### Council Tax Band

D

### EPC Rating:

| Energy Efficiency Rating                           |                            |           |
|--|----------------------------|-----------|
|  | Current                    | Potential |
| <i>Very energy efficient - lower running costs</i> |                            |           |
| (92 plus) <b>A</b>                                 |                            |           |
| (81-91) <b>B</b>                                   |                            |           |
| (69-80) <b>C</b>                                   |                            |           |
| (55-68) <b>D</b>                                   |                            |           |
| (39-54) <b>E</b>                                   |                            |           |
| (21-38) <b>F</b>                                   |                            |           |
| (1-20) <b>G</b>                                    |                            |           |
| <i>Not energy efficient - higher running costs</i> |                            |           |
| <b>England &amp; Wales</b>                         | EU Directive<br>2002/91/EC |           |