

BUTLER & STAG



Navigation Road, Bromley-by-Bow E3  
London

£2,200 pcm

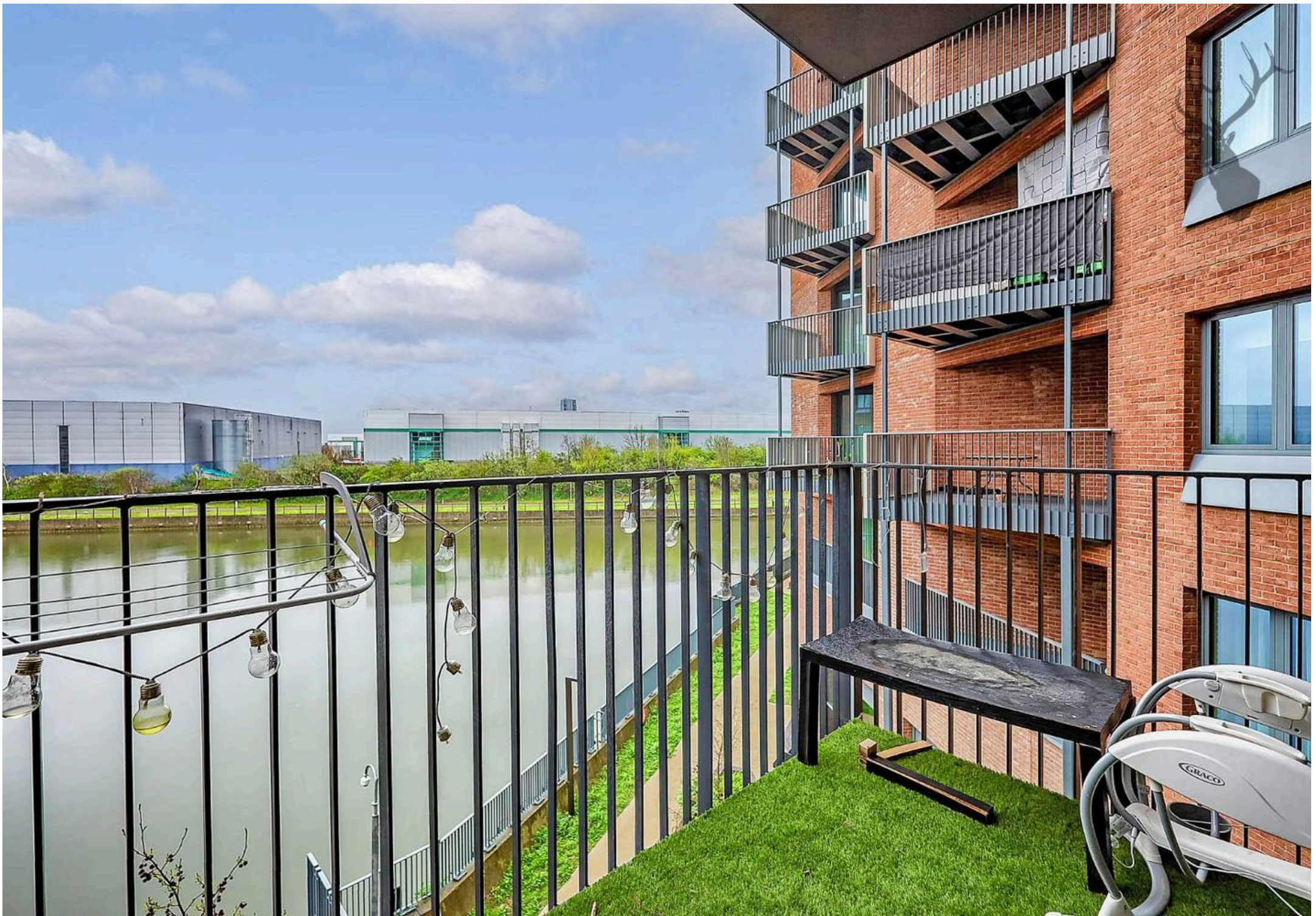


## Navigation Road, Bromley-by-Bow E3

Exceptionally spacious two bedroom apartment with a private balcony overlooking the River Lea, located close to Bromley-by-Bow underground station.

- Two Bedroom Apartment
- Second Floor with a Private Balcony
- Two Bathrooms
- Over 800 Sq/Ft
- Overlooking River Lea
- Close to Bromley-by-Bow Station
- Furnished
- Available from 5th August 2026





Exceptionally spacious two bedroom apartment with a private balcony overlooking the River Lea, located close to Bromley-by-Bow underground station.

Measuring over 800 Sq/Ft and finished to a modern standard throughout, this second floor property features a large open-plan kitchen / reception which opens out onto the balcony with river views. Further comprising of two generously-sized double bedrooms (one with an en-suite shower room), a main bathroom and plenty of storage, there is also resident bike storage available.

Situated next to the Bow Locks, this location perfectly facilitates waterside walks, runs and cycles towards popular Hackney Wick in one direction and towards the Thames in the other.

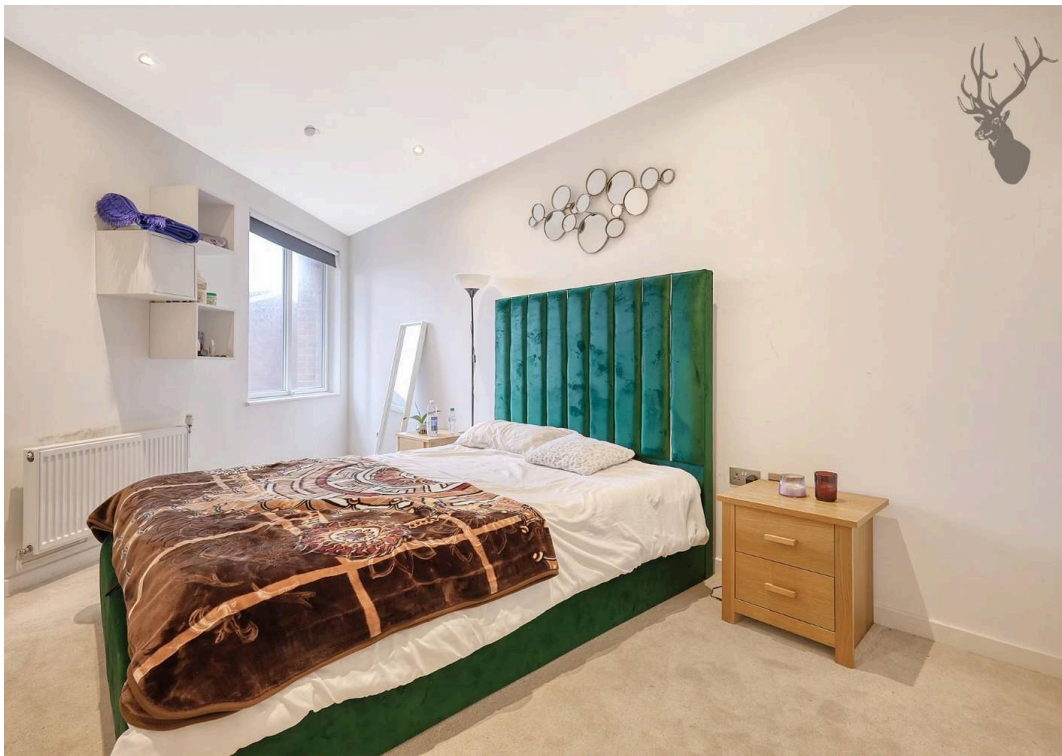
Offered furnished and available from 5th August 2026.

Council Tax band: D

EPC Energy Efficiency Rating: C

EPC Environmental Impact Rating: C







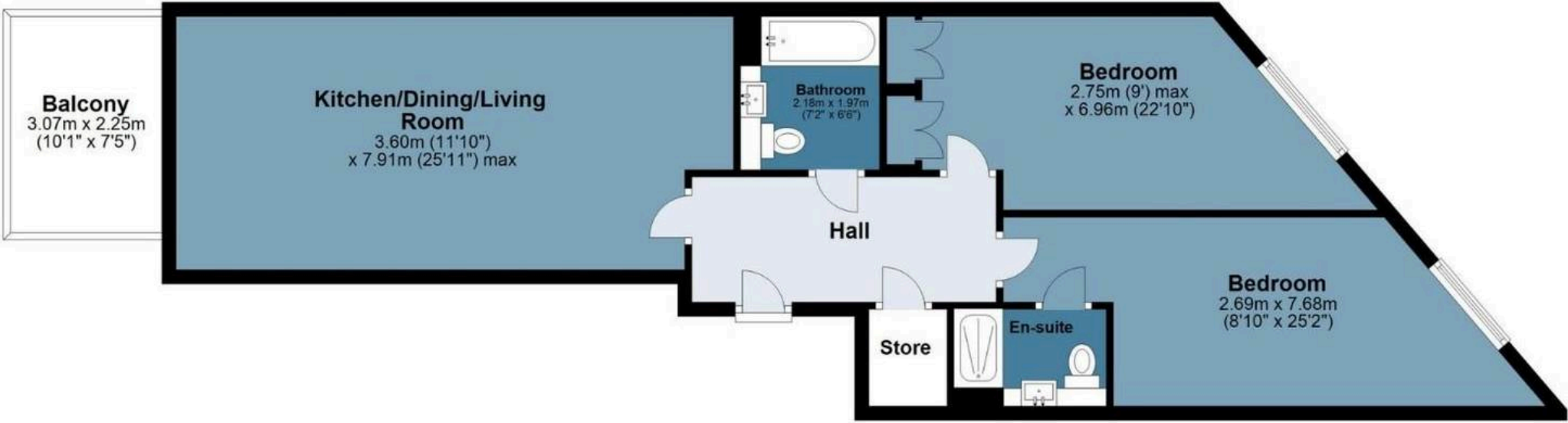
# Cassion Moor Court



Approx. Gross Internal Area 76.6 sq. metres (824.6 sq. feet)

## Second Floor

Approx. 76.6 sq. metres (824.6 sq. feet)



Measurements are approximate and for illustration purposes only. While we do not doubt the accuracy and completeness, we advise you conduct a careful independent assessment of the property to determine monetary value

# FROM EAST LONDON ENERGY TO WEST ESSEX EASE

## We Make Moving Home Easy.

At Butler and Stag, we do more than just connect London to West Essex – we make the move seamless. With offices spanning from vibrant East London to the tranquillity of West Essex, we understand the nuances of each area and the journey people take between them. Our marketing goes beyond standard listings, showcasing every property with precision, creativity, and reach that others simply can't match. Coupled with an unparalleled attention to detail, from first enquiry to final move-in, we ensure every client and customer feels informed, supported, and confident. Simply put, we do the little things that make a big difference, setting us apart in every step of the property experience.



LONDON   STRATFORD   SOUTH WOODFORD   BUCKHURST HILL   LOUGHTON   EPPING   BEYOND

# Like what you see? Let's talk

Book your **FREE** valuation now



020 8102 1236

[london@butlerandstag.com](mailto:london@butlerandstag.com)

508 Roman Road, Bow, London, E3 5LU

[butlerandstag.uk](http://butlerandstag.uk)

IMPORTANT NOTICE - These particulars have been prepared in good faith and they are not intended to constitute part of an offer or contract. We have not performed a structural survey on this property and the services, appliances and specific fittings have not been tested. All photographs, measurements, floor plans and distances referred to are given as a guide and should not be relied upon.

BUTLER & STAG

