



MILE



Chamberlayne Road, London NW10

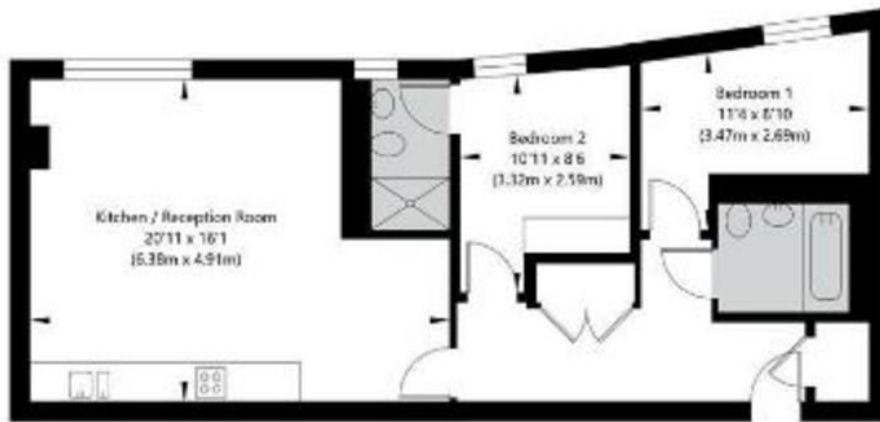
£450,000 Leasehold

Ideally located and set within a secure residential building, this top-floor two-bedroom apartment offers comfortable, well-balanced living with plenty of natural light throughout. The property features two well-proportioned bedrooms and two bathrooms, including a modern en-suite, making it ideal for professional sharers, couples, or small families.

The apartment enjoys a practical layout with bright interiors that create an airy and welcoming atmosphere. A notable benefit is that gas is included within the service charge, covering heating and hot water, offering both convenience and predictable monthly costs.

- **Ideally Located**
- **Plenty of Natural light**
- **Two bedrooms**
- **Two bathrooms (one en-suite)**
- **Great transport links**
- **Secure Building**
- **Top floor**
- **Great for landlords and first time buyers**
- **Close to local shops and amenities**
- **Gas is included in the service charge (covers heating and hot water)**

Third Floor
GROSS INTERNAL FLOOR AREA
APPROX. 63.33 SQ M / 682 SQ FT



APPROXIMATE GROSS INTERNAL FLOOR AREA 63.33 SQ M / 682 SQ FT
THIS FLOOR PLAN IS FOR ILLUSTRATIVE PURPOSES ONLY AND
SHOULD BE USED FOR THIS PURPOSE BY PROSPECTIVE APPLICANTS AS ITS NOT TO SCALE.

MONEY LAUNDERING REGULATIONS 2003: Intending purchasers will be asked to produce identification documentation at a later stage and we would ask for your co-operation in order that there will be no delay in agreeing the sale.

General: While we endeavour to make our sales particulars fair, accurate and reliable, they are only a general guide to the property and, accordingly, if there is any point which is of particular importance to you, please contact the office and we will be pleased to check the position for you, especially if you are contemplating travelling some distance to view the property.

Measurements: These approximate room sizes are only intended as general guidance. You must verify the dimensions carefully before ordering carpets or any built-in furniture.

Services: Please note we have not tested the services or any of the equipment or appliances in this property, accordingly we strongly advise prospective buyers to commission their own survey or service reports before finalising their offer to purchase.