



Arundel Drive, HA2

£445,000

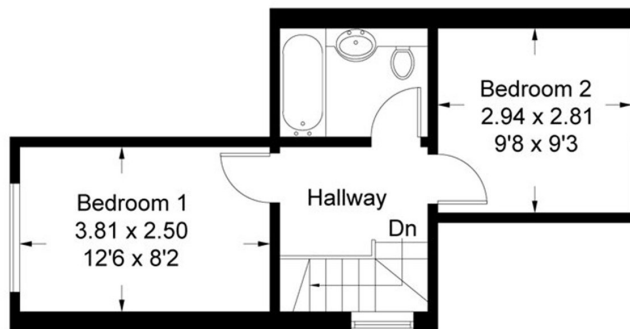
This home features an open plan reception, a fitted kitchen with matching units and a rear reception room with French doors to the garden and access to an under-stairs wet room. Upstairs offers loft access, two double bedrooms and a family bathroom.

Arundel Drive is conveniently located for Alexandra Park, South Harrow's busy High Street and excellent transport links including the Piccadilly Line and numerous bus routes.

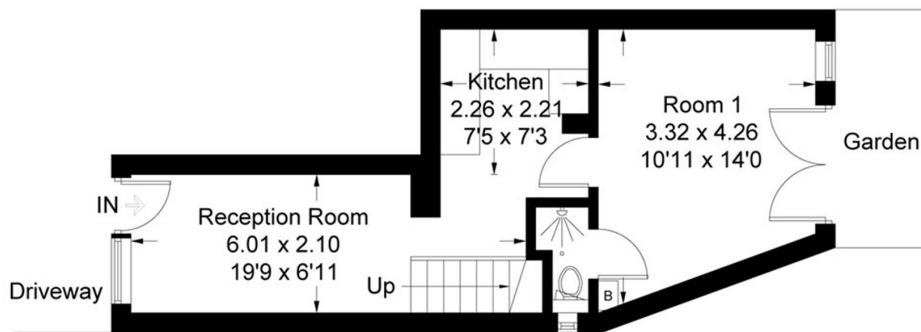
- End Of Terrace • Two Receptions • Two Bathrooms •
- No Onward Chain • Off Street Parking • Secluded Garden •

148A Arundel Drive, Harrow, HA2 8PP

Approximate Gross Internal Area = 61.0 sq m / 657 sq ft



First Floor



Ground Floor

Illustration for identification purposes only, measurements are approximate, not to scale. David Conway © 2015 (ID213089)

David Conway
020 8422 5222

Energy Rating: We aim to make our particulars both accurate and reliable. However they are not guaranteed; nor do they form part of an offer or contract. If you require clarification on any points then please contact us, especially if you're travelling some distance to view. Please note that appliances and heating systems have not been tested and therefore no warranties can be given as to their good working order.