



## 6 Northlea

, Weston by Welland, LE16 8HY

**£995 PCM**

Situated within the delightful village of Weston-by-Welland, right on the edge of some beautiful countryside but only a 10 minute drive from Market Harborough town and its vast range of amenities, is this stunning, individually designed detached bungalow.

The stylish, high specification accommodation comprises open plan living/diner, kitchen, bedroom and bathroom. Additional benefits include a driveway and a pleasant little decked garden to the side.

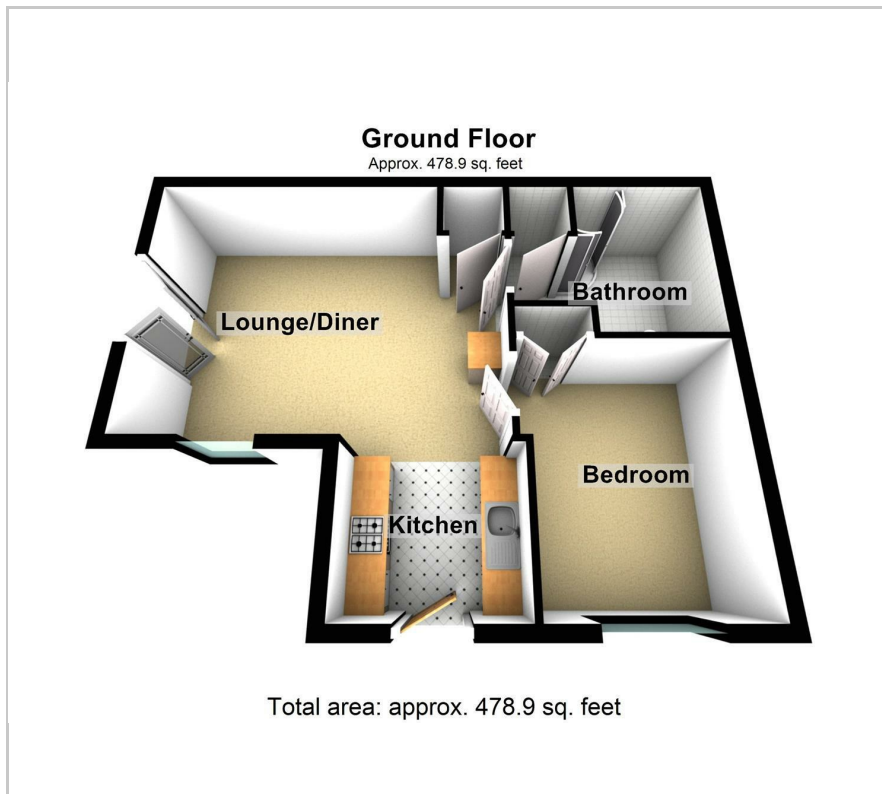
- Delightful Weston-by-Welland village
- Countryside edge location
- Attractive detached bungalow
- Well presented high spec accommodation
- Open plan living/dining/kitchen
- Bedroom and shower room
- Driveway and decked garden
- No upward sales chain

### Viewing

Please contact our Market Harborough Sales Office on 01858 461888 or our Lutterworth office on 01455 888670 if you wish to arrange a viewing appointment for this property or require further information.



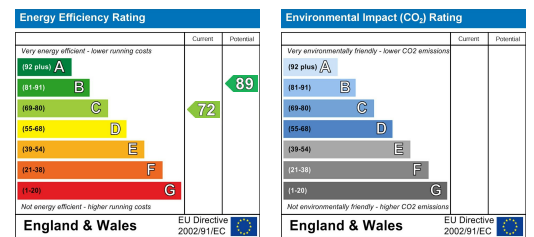
## Floor Plan



## Area Map



## Energy Efficiency Graph



These particulars, whilst believed to be accurate are set out as a general outline only for guidance and do not constitute any part of an offer or contract. Intending purchasers should not rely on them as statements of representation of fact, but must satisfy themselves by inspection or otherwise as to their accuracy. No person in this firm's employment has the authority to make or give any representation or warranty in respect of the property.