

Property ref: 151336

## Projection West, Reading, RG1 1ET

£1,200 PCM



A one bedroom town centre apartment located just a short walk from Reading station.

- Open plan sitting room opening to a balcony area

Reading Borough Council Tax Band C

**Available 27/07/2026**

Property Particulars

- Fitted kitchen with integrated appliances; Electric heating
- Double bedroom; No parking
- Bathroom with a shower above the bath; £49 per month to cover water charges
- Eighth floor position; EPC Rating: C
- Furnished; Managed by LANDLORD

\*Fees For Assured Shorthold Tenancies: when you rent a property from us you will be required to pay a sum equivalent to one weeks' rent for a holding deposit. Upon successful application, this amount will be off set against your first months' rent. You will also be required to pay a security deposit equivalent to 5 weeks' rent which will be held and protected in line with Deposit legislation. For more information about our fees please visit: [www.haslams.net](http://www.haslams.net)

Fees for all other tenancies (Non Housing Act Tenancies / Company Lets): when you rent a property from us we will charge you a one-off fee per property. This charge is the equivalent of 15 days of the monthly rental charge (+VAT) with a minimum fee of £450 (inc.VAT) up to a maximum of £650 (inc.VAT). Other fees may apply depending on your circumstances.

---

**0118 960 1055**

**[lettings@haslams.net](mailto:lettings@haslams.net) [www.haslams.net](http://www.haslams.net)**

**Haslams Estate Agents Ltd, 159 Friar Street, Reading, Berkshire, RG1 1HE**

---



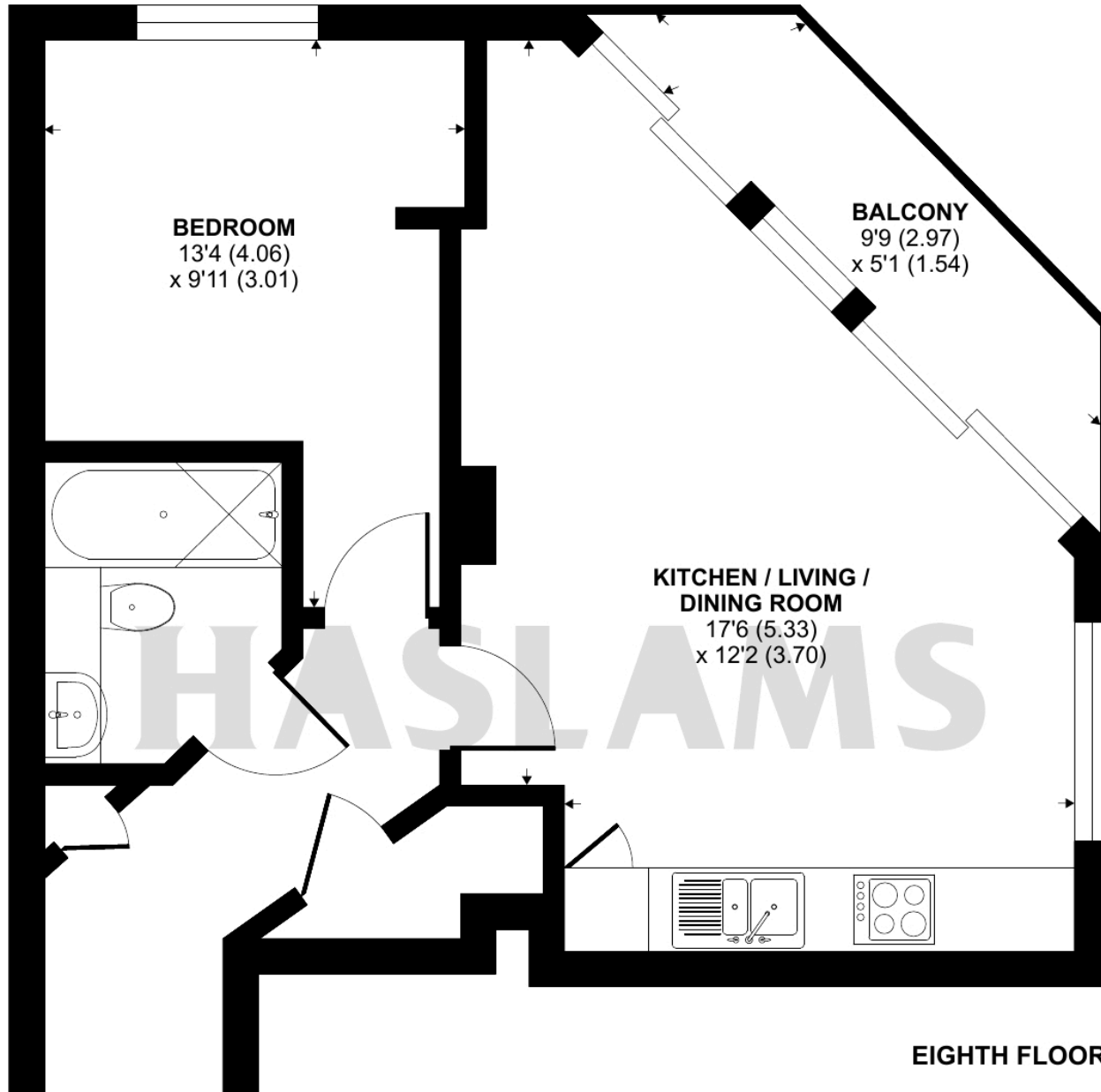


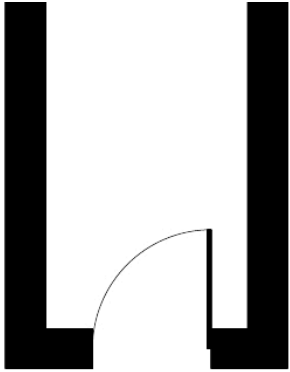


# Projection West, Merchants Place, Reading, RG1

Approximate Area = 482 sq ft / 44.7 sq m

For identification only - Not to scale





Floor plan produced in accordance with RICS Property Measurement 2nd Edition, Incorporating International Property Measurement Standards (IPMS2 Residential). © n7checom 2024. Produced for Haslams. REF: 1205825