

**HOLMDALE ROAD  
WEST HAMPSTEAD  
LONDON  
NW6**



**Bargets Estate Agents**

**\*A SUPERB CHARMING VICTORIAN FAMILY HOME\***  
**\*NEWLY REFURBISHED CONDITION\***



**A superb newly refurbished and immaculately presented Victorian family home.**

**Retaining many of the original period features including grand proportions and detailed cornicing, this exceptional home radiates warmth and character.**

**Approached by an attractive front garden, the bright, spacious, well-planned configuration provides generous entertaining spaces and excellent accommodation. Enjoying an abundance of light throughout, the property comprises of: Reception Room, Dining Room, Kitchen/Breakfast Room with pantry & bi-folding doors leading onto a delightful manicured rear West facing garden, Principal Bedroom Suite, 4 Further Bedrooms, 2 Further Bathrooms (1 Ensuite), Guest Cloakroom and a separate Utility & Store Room.**

**Additionally, there is scope to extend/increase the size of the property with granted planning permission for a full side return. Also there is previously approved planning permission (lapsed) for a full basement conversion and kitchen side return, plus new staircase and a full front entrance renovation and rebuild. Drawings, Designs and Full Plans are available on request.**

**Holmdale Road is a popular quiet residential street close to numerous highly regarded schools, nurseries, cafes, boutiques, shops and restaurants of West Hampstead. The property is ideally located within a moments' walk from the numerous transport links of: the Jubilee, Thameslink and Overground Stations in West Hampstead, all of which provide easy access to the vibrant heart of London.**

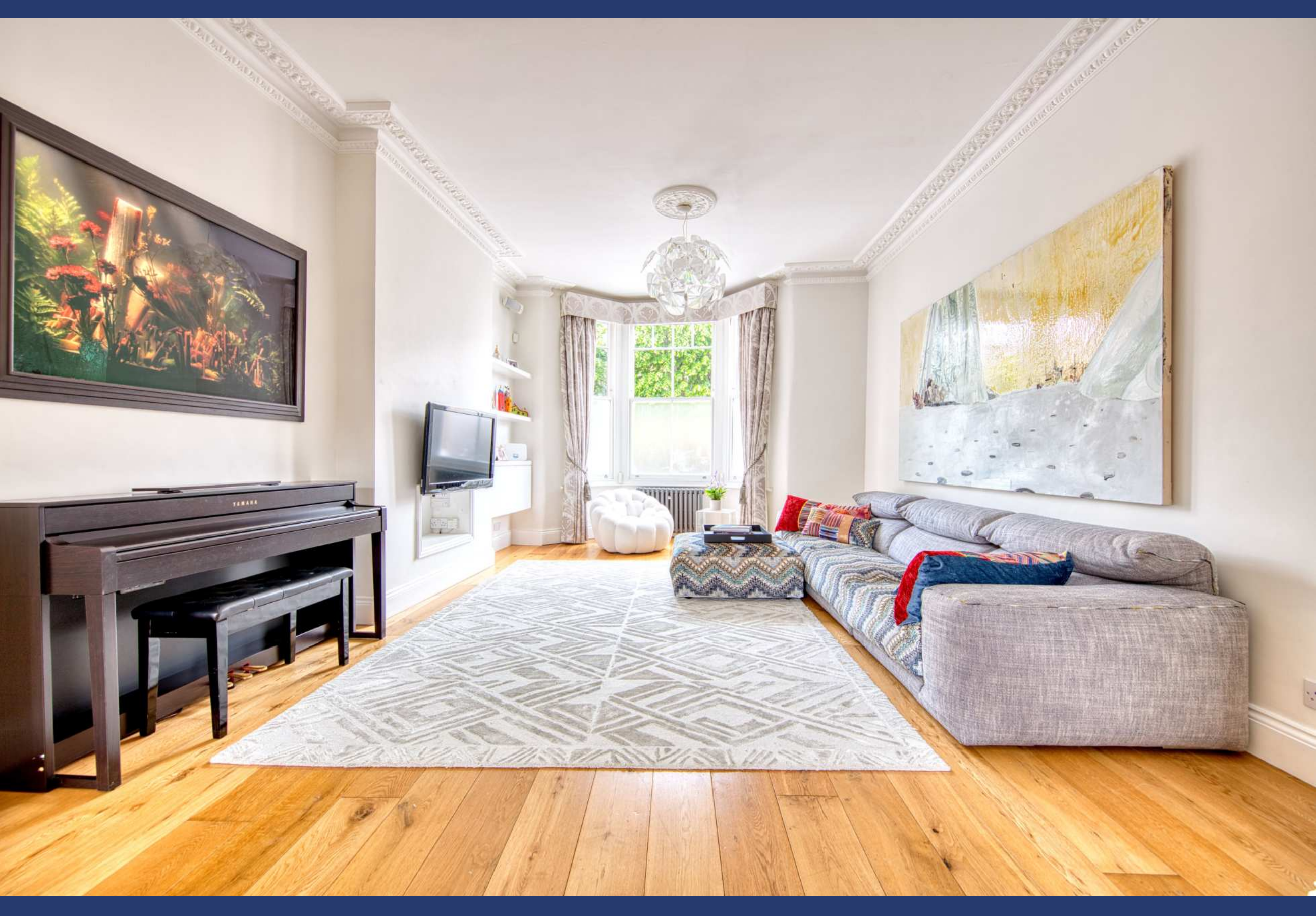
**FREEHOLD**

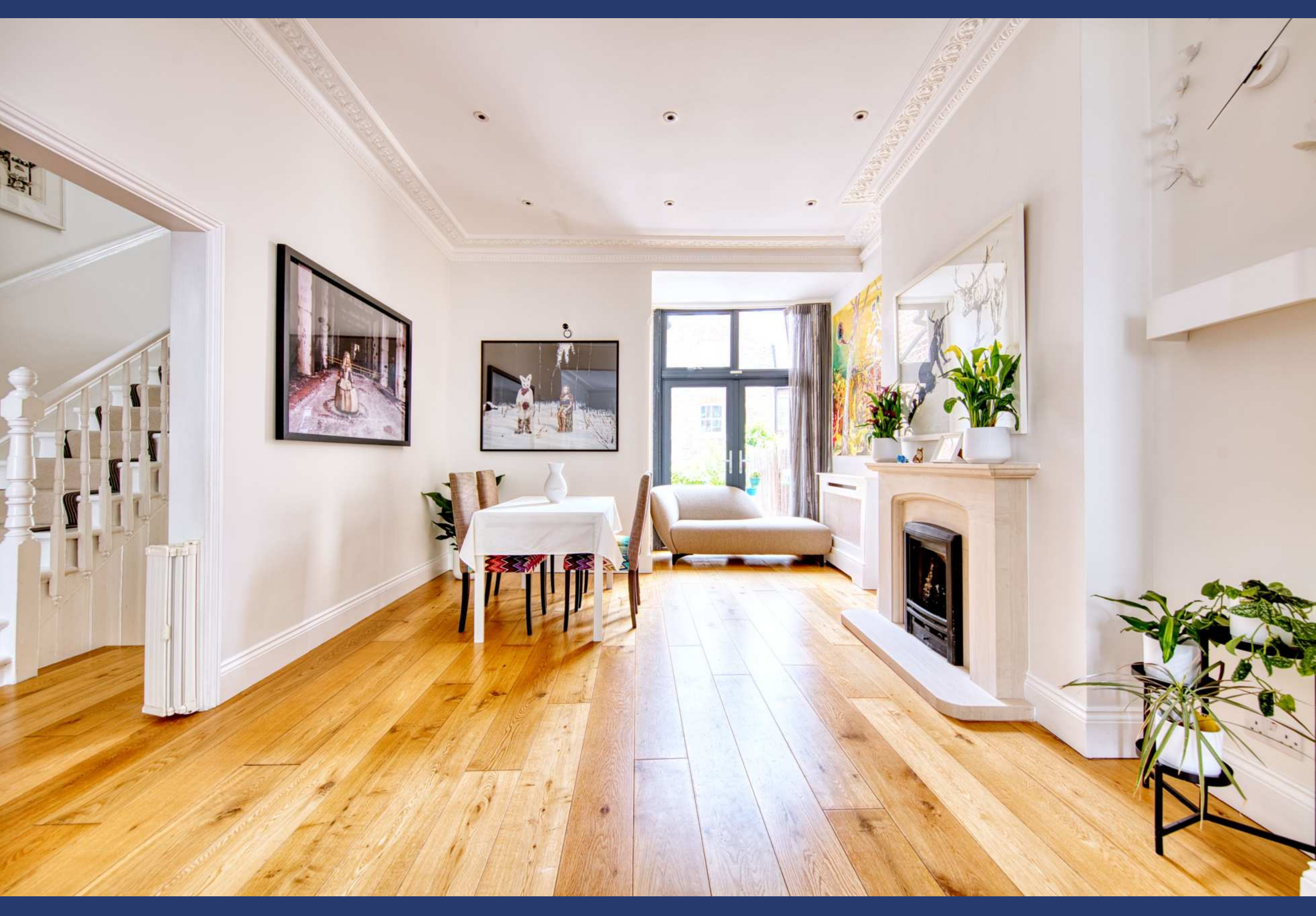
**PRICE ON APPLICATION**

**Reception Room / Dining Room / Kitchen/Breakfast Room / Principal Bedroom Suite / 4 Further Bedrooms /  
2 Bathrooms (1 Ensuite) / Utility & Store Room / Guest Cloakroom / West Facing Garden / Front Garden /  
Residents Parking Zone / Under-Floor Heating / Sonos Surround Sound System**























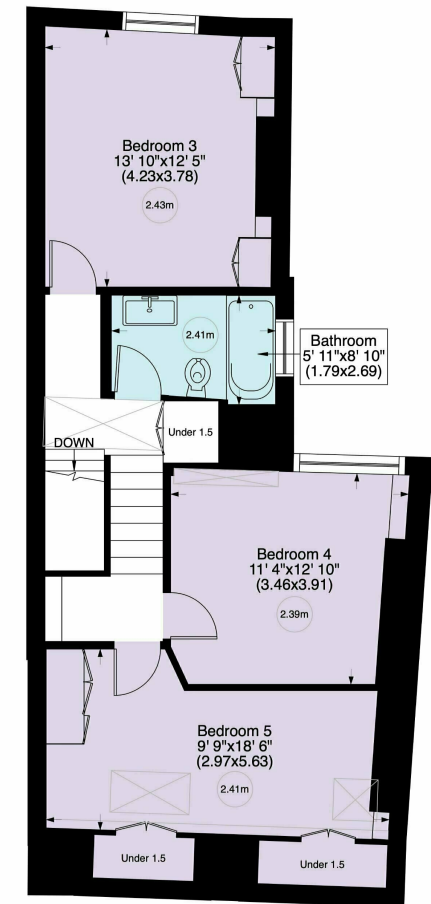
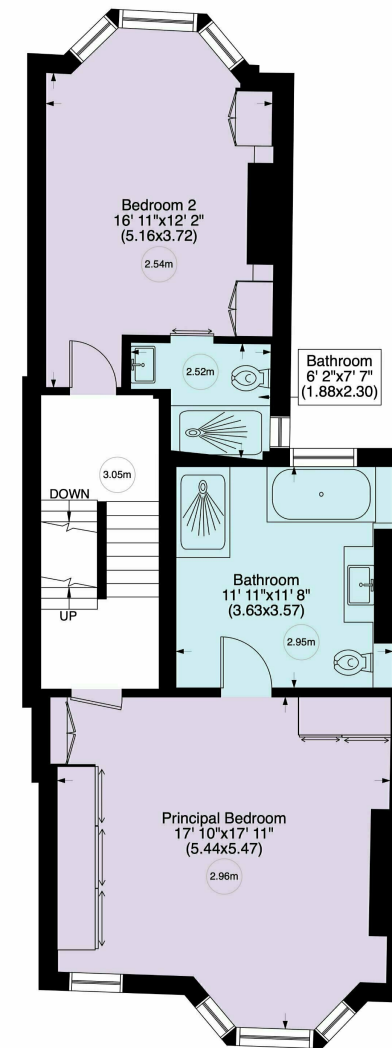
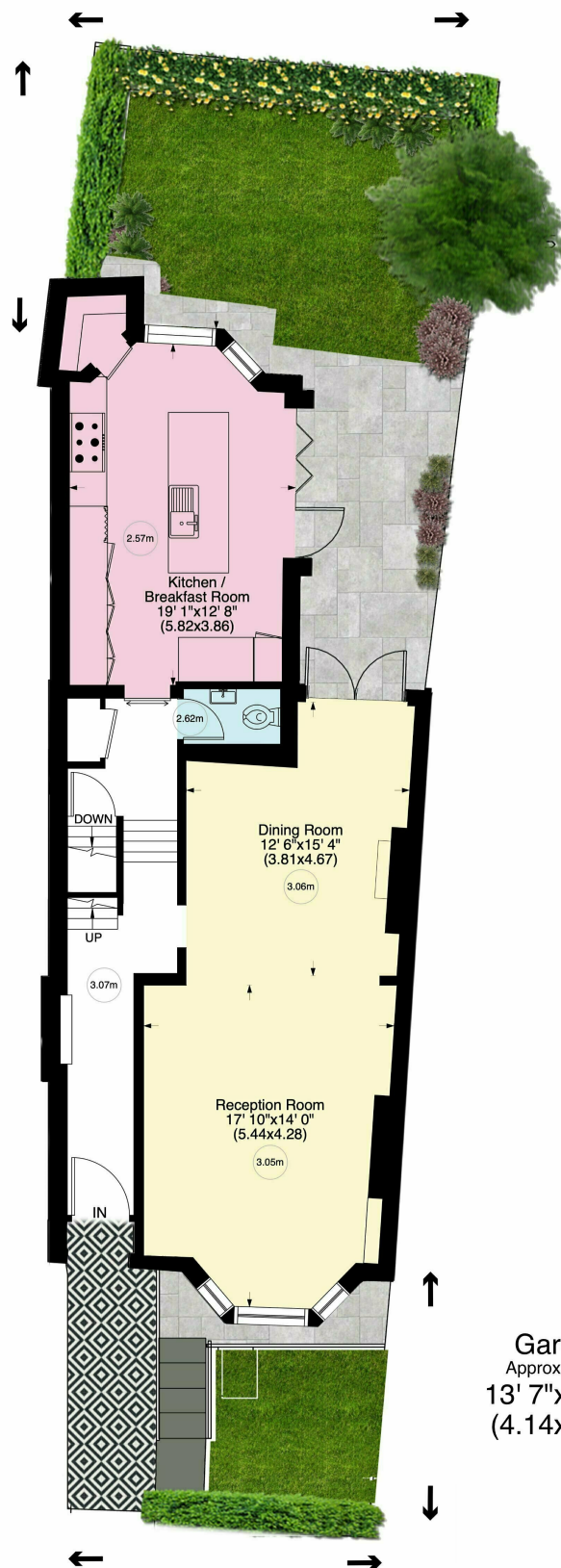
# Holmdale NW6

Gross internal area (approx.)  
2613 Sq ft (243 Sq m) Including Under 1.5



Site Area (approx.) Acre 0.037 Hectares 0.015  
For identification only, Not to Scale Produced for and copyrighted, to Bargets ©

Garden  
Approximately  
15' 0" x 23' 5"  
(4.57 x 7.13)



www.WilliamSalisbury.Photography

Not to Scale, for guidance only and must not be relied upon as a statement to fact. All measurements areas are approximate only (and have been prepared in accordance with the current edition of the RICS Code of Measuring Practice).