



Doggett Street

Leighton Buzzard, LU7

Offers In Excess Of £170,000



2



1



1



C



QUARTERS

YOUR NEXT MOVE

Doggett Street, Leighton Buzzard, LU7 1BD

We are delighted to offer for sale this spacious two bedroom first floor apartment located within walking distance of the Town Centre and the Mainline Train Station. The property accommodation comprises of Entrance hallway, lounge/dining room, kitchen, two bedrooms and a family bathroom. Additional benefits include double glazing and gas central heating. Viewing is highly recommended.

Location:

Doggett Street is in the heart of Leighton Buzzard, within walking distance of the historic Market Town Centre. This property is ideally placed for local convenience stores, restaurants and take-aways, and access to a range of scenic walks including Rushmere Park, the Grand Union canal and many others. The vibrant Town Centre provides a host of further amenities in a historic setting. There are a variety of popular schools locally, and so this area is very popular with families of all ages. The property is well situated for access to road transport links, with the nearby by-pass providing easy access to Aylesbury and Milton Keynes, and further afield via the M1 junction 11A. Additionally, the mainline train station provides regular trains to London Euston in as little as 30 minutes.

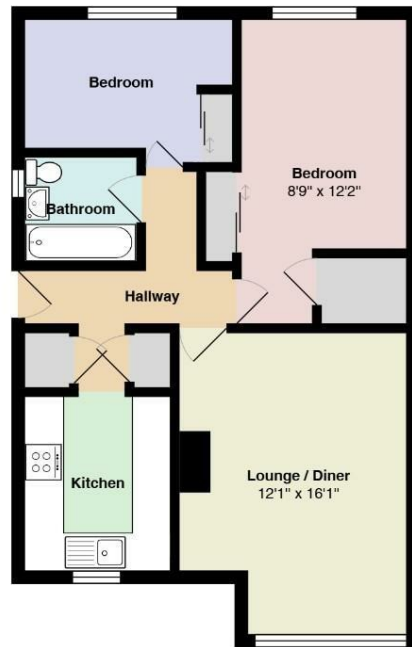
Layout:

Enter via a secure front door into the hallway. There are doors to all rooms, and two built in storage cupboards. The lounge/dining room is well proportioned, with plenty of space for a range of furniture. The kitchen has been fitted with a range of wall and base level units, and there are spaces for a cooker, fridge freezer and washing machine. There are two generous bedrooms. The master bedroom features a built in wardrobe and built in storage cupboard. The second bedroom faces the rear aspect and would make a good spare bedroom or office, and also includes a built in wardrobe. The family bathroom has been fitted with a three piece suite comprising of a low level WC, vanity wash hand basin and panel bath with shower over.

Outside:

There is a brick build storage room ideal for storage.

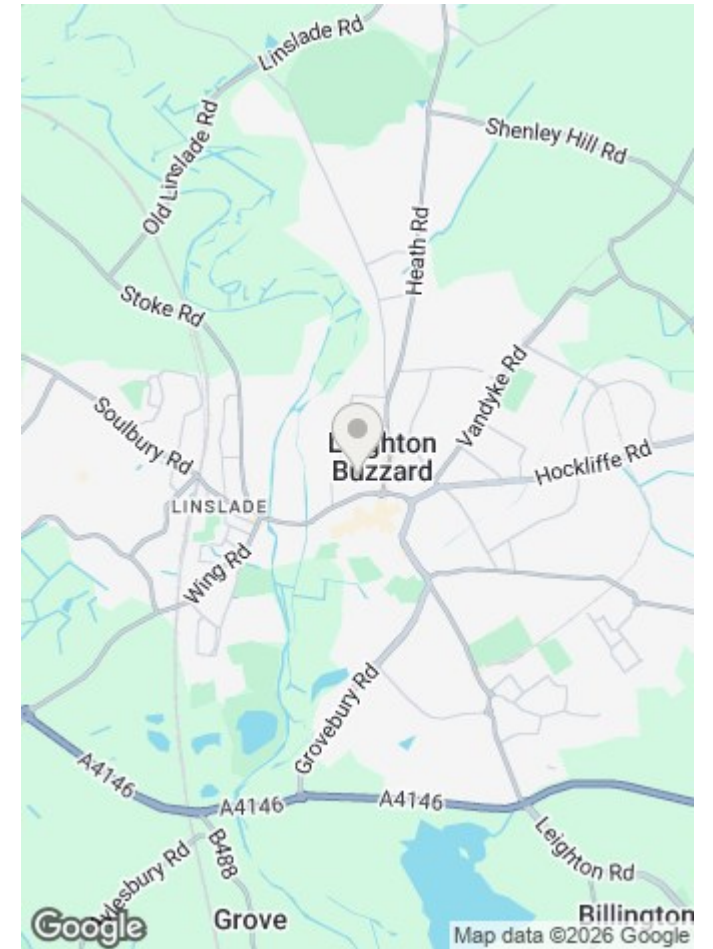
Floor Plan



Total Area: 626 ft²

All measurements are approximate and for display purposes only

Map



17-21 Ropa Court, Leighton Buzzard, Bedfordshire, LU7 1DU

T: 01525 853733 E: info@quarterslb.co.uk

www.quartersestateagents.co.uk

