



Park Mount

Harpenden, AL5 3AR

Immaculately presented five bedroom family home, retaining many period features, offering bright and spacious areas throughout including standout kitchen/breakfast room. Benefitting from off-street parking and a generous garden room. Ideally located for excellent schooling, close to the town centre and station and open countryside.

Guide price £1,295,000

Park Mount

Harpenden, AL5 3AR



- Immaculately presented
- Period Features
- Standout kitchen/breakfast room
- Five Bedrooms
- Off-street Parking with EV Charger
- Ideally Located
- Circa 1778 sq ft plus garden room
- Garden Room
- Council Tax Band F

Entrance Hall

Kitchen/Dining/Living Area

26'7" x 19'10" (8.12m x 6.07m)

Sitting Room

24'11" x 11'5" (7.61m x 3.50m)

Utility Room

Shower Room

Bedroom One

14'10" x 12'9" (4.53m x 3.91)

Bedroom Two

11'7" x 9'7" (3.55m x 2.94)

Bedroom Three

10'1" x 7'2" (3.09m x 2.20m)

Bedroom Four

14'5" x 14'0" (4.40m x 4.28m)

Bedroom Five

10'5" x 9'1" (3.20m x 2.77m)

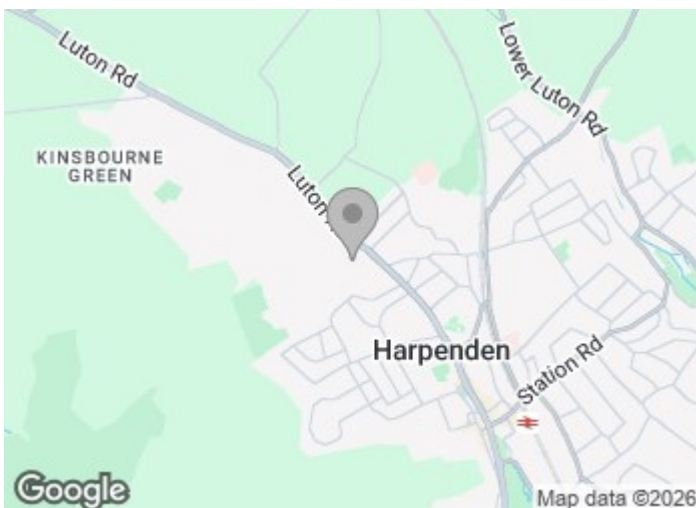
Family Bathroom

Home Office

10'5" x 9'1" (3.20 x 2.79)

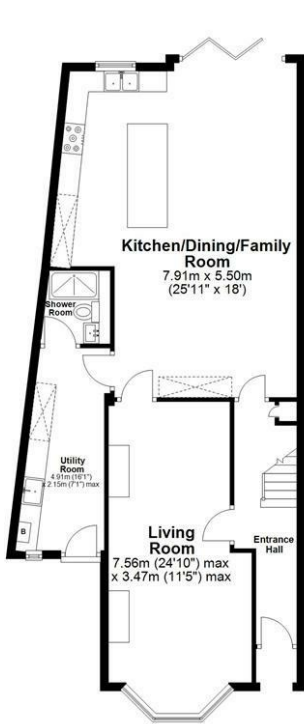
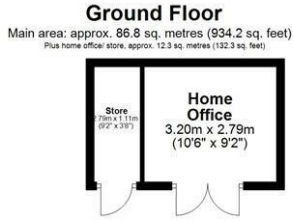
Store

9'1" x 3'7" (2.79 x 1.11)

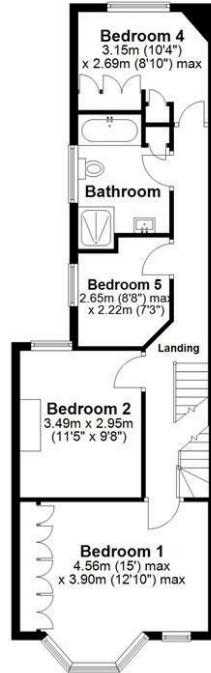




Floor Plan



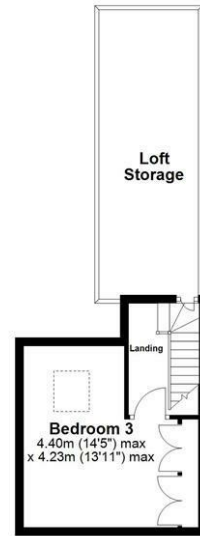
First Floor
Approx. 58.0 sq. metres (624.6 sq. feet)



Main area: Approx. 165.2 sq. metres (1778.1 sq. feet)
Plus home office/store, approx. 12.3 sq. metres (132.3 sq. feet)
Sketch layout only. Not to scale. Plan produced for Whittaker & Co.

Plan produced using PlanUP.

Second Floor
Approx. 20.4 sq. metres (219.3 sq. feet)



These particulars, whilst believed to be accurate are set out as a general outline only for guidance and do not constitute any part of an offer or contract. Intending purchasers should not rely on them as statements of representation of fact, but must satisfy themselves by inspection or otherwise as to their accuracy. No person in this firm's employment has the authority to make or give any representation or warranty in respect of the property.

