

Settle.



High Road Leyton

, London, E15 2DE

£400,000



2



1

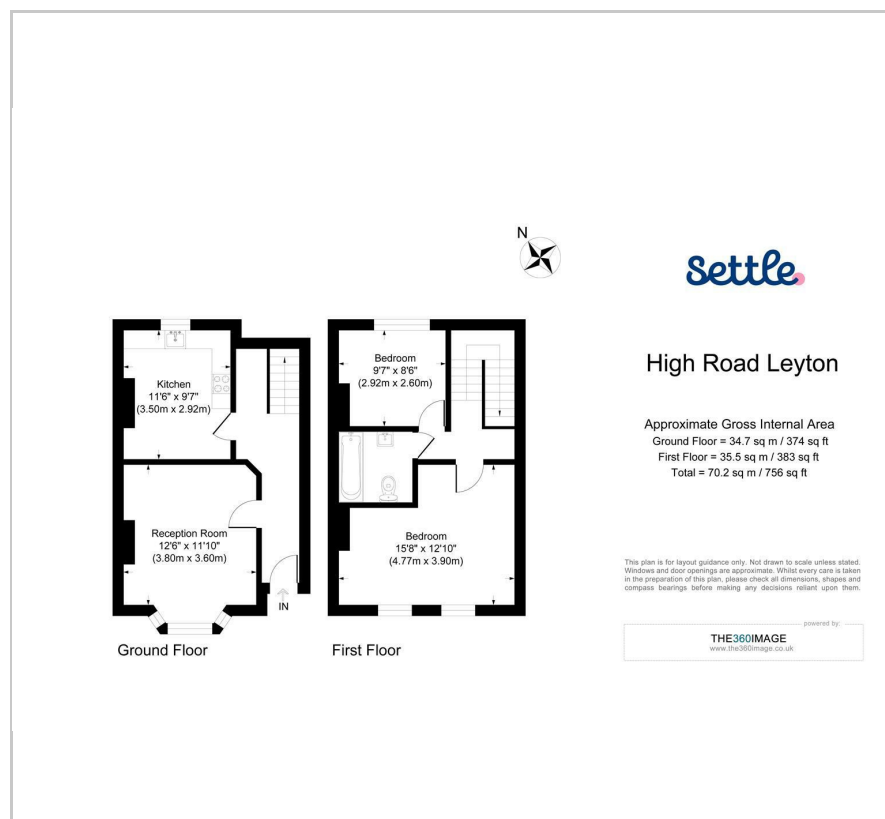


1

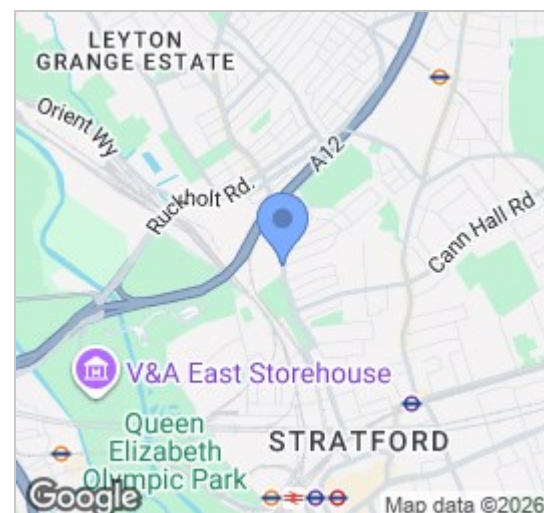


D

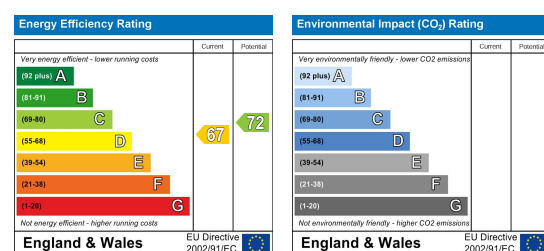
Floor Plan



Area Map



Energy Efficiency Graph

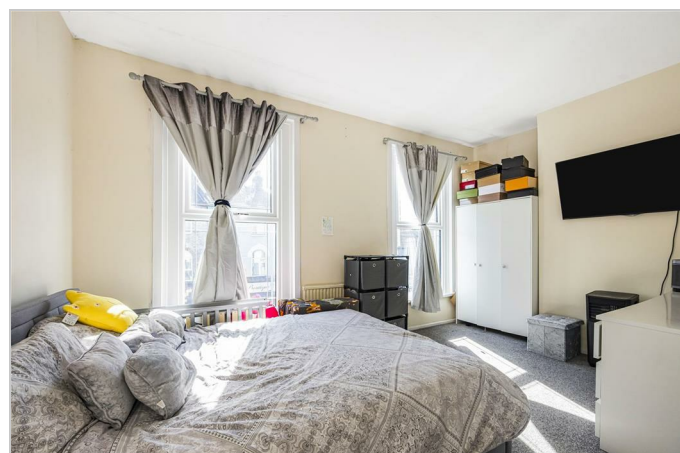


Viewing

Please contact our Settle Office on 0208 124 2522 if you wish to arrange a viewing appointment for this property or require further information.

- Two Bedrooms
- Split Level Flat
- Bay Fronted
- Chain Free Sale
- Leasehold Approximately 149 Years
- Good Condition Throughout
- Ground Rent £125 Per Annum
- First Floor Bathroom
- 0.2 Miles to Leyton Station (6 Minute Walk)
- 756 sqft

This excellent upper-floor, two bedroom split level flat is enviably situated on a popular road and is comfortably perched between Leyton, Stratford and Walthamstow. Enter through your very own private front door and you will discover a cosy bay fronted lounge featuring a light grey laminate running underfoot. The reception room is certainly the heart of this charming property and offers ample space for dining and entertaining friends and family. A stylish kitchen follows complete with white gloss cabinets, integrated appliances and the benefit of space to dine. The first floor of the property comprises of a spacious master bedroom with the high ceilings a continuous theme throughout. The spacious family bathroom is next and has been smartly designed and finished with an L shaped bath and shower attachment. To the rear, the second bedroom completes this charming Victorian home.



These particulars, whilst believed to be accurate are set out as a general outline only for guidance and do not constitute any part of an offer or contract. Intending purchasers should not rely on them as statements of representation of fact, but must satisfy themselves by inspection or otherwise as to their accuracy. No person in this firm's employment has the authority to make or give any representation or warranty in respect of the property.