

william  
h brown

Select

Mile End Road  
Norwich



AN ELEGANT SEMI-DETACHED HOME OFFERING VERSATILE AND SPACIOUS FAMILY LIVING LOCATED IN THE GOLDEN TRIANGLE.

AN ELEGANT SEMI-DETACHED HOME OFFERING VERSATILE AND SPACIOUS FAMILY LIVING LOCATED IN THE GOLDEN TRIANGLE.

## 46 Mile End Road, Norwich, Norfolk, NR4 7QX

2

### ENTRANCE HALL

Ornate glazed door to front aspect, cornice, under stairs cupboard, wall lighting, radiator, doors to sitting room, playroom, wc and kitchen breakfast room, stairs to first floor landing.

### SITTING ROOM

Ornate casement windows to bay window, fireplace with cast iron wood burner, wood floors, picture rail, wall lighting, radiator.

### FAMILY ROOM

Cast iron fireplace, laminate flooring, picture rail, cornice, radiator, french doors to rear aspect leading on to the garden.

### WC

Sash window to rear aspect, suite comprising low level wc, vanity sink unit, gas fired central heating boiler.

### KITCHEN / BREAKFAST ROOM

An inviting open plan working space that open into the dining room, sash windows to side aspect, kitchen comprises a range of wall and base units with block wood work surfaces over, inset ceramic sink and drainer, two electric Neff ovens, 5 ring gas hob, space for fridge freezer, plumbing and space for dishwasher, breakfast bar, tiled floor, radiator.

### DINING ROOM

An extension to the original house offering a fluid and versatile living space with vaulted ceilings and french doors leading onto the rear garden, tiled floor, radiator.





# Select





### UTILITY ROOM

Fitted with a range of wall and base units, inset stainless steel sink and drainer, plumbing and space for washing machine and tumble dryer, tiled floor, door to front aspect, door to shower room;

### SHOWER ROOM

Suite comprising shower cubicle, low level wc, wash hand basin.

### LANDING

Stairs leading from entrance hall to first floor landing, sash windows to side aspect, doors to all bedrooms and loft room

### BEDROOM ONE

Double glazed window to front aspect, cast iron and tiled fireplace, fitted wardrobes, radiator.

### BEDROOM TWO

Double glazed window to rear aspect, laminate floor, radiator.

### BEDROOM THREE

Double glazed window to rear and side aspect, laminate floor, radiator.

### BEDROOM FOUR

Double glazed window to front aspect, radiator.

### FAMILY BATHROOM

Double glazed windows to side aspect, suite comprising bath with electric shower over, low level wc, pedestal sink, radiator.

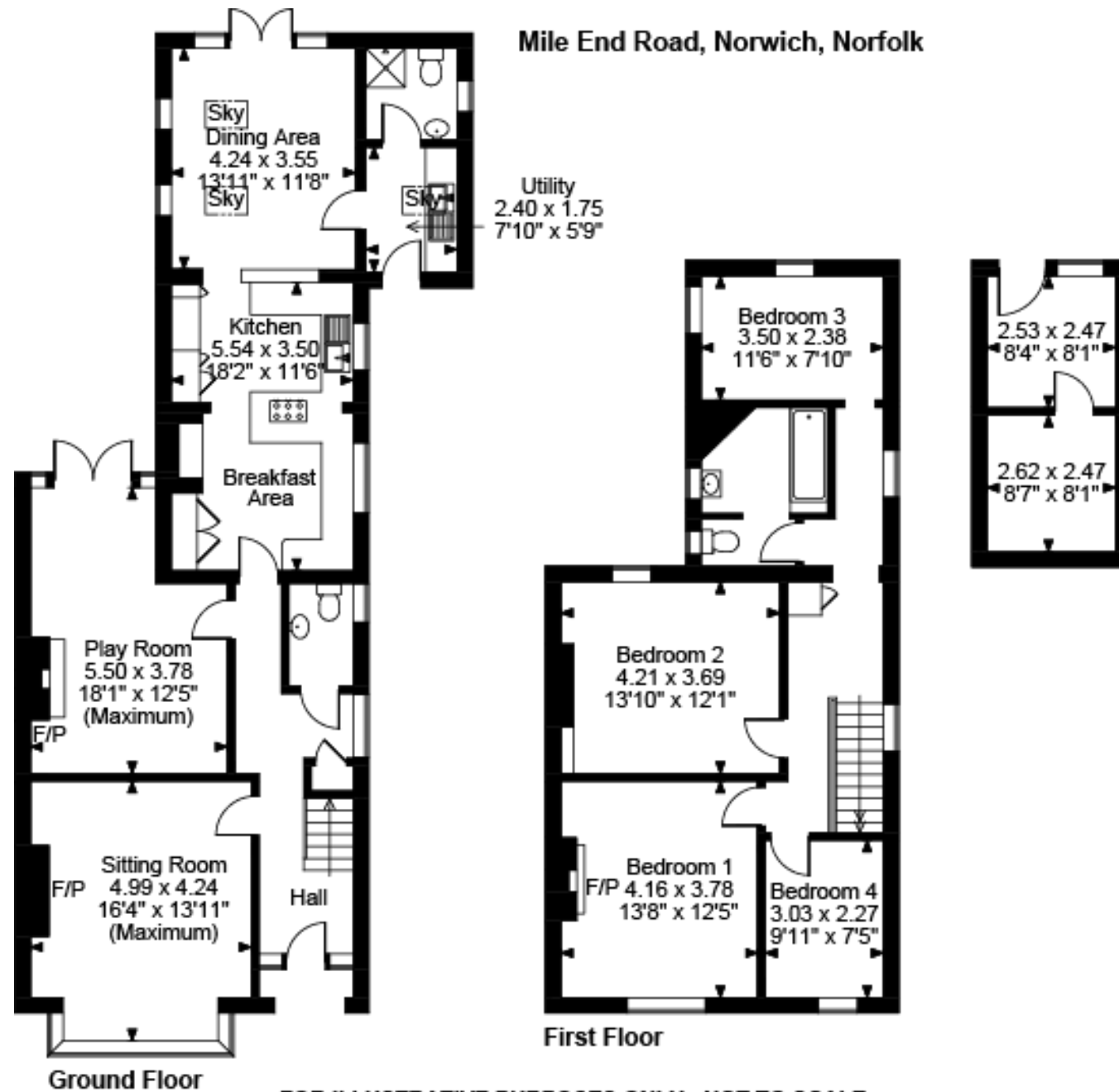




## EXTERNAL

The property offers a loft space leading from the first floor landing giving potential for additional storage and potential conversion opportunity. There is a double glazed windows to rear aspect and eaves storage.

Mile End Road, Norwich, Norfolk



FOR ILLUSTRATIVE PURPOSES ONLY - NOT TO SCALE

The position & size of doors, windows, appliances and other features are approximate only.

© ehouse. Unauthorised reproduction prohibited. Drawing ref. dig/8648383/JRD

# Select

£600,000

Situated in the sought-after Golden Triangle location of Norwich, this exquisite semi-detached property boasts an array of period features throughout, combined with modern conveniences to offer the perfect blend of charm and functionality. Featuring four comfortable bedrooms, this home is ideal for families looking for a spacious and versatile living space.

The rear of the property has been thoughtfully extended to create a fully open plan kitchen/dining area that seamlessly flows onto the manicured gardens, perfect for entertaining and enjoying the beautiful and mature southwest facing rear garden.

In addition to the stunning interior, this property offers driveway parking and a garage, providing ample space for vehicles and storage. The family-friendly layout and prime city location make this home a rare find, appealing to a discerning buyer seeking a harmonious blend of traditional elegance and contemporary design. Don't miss the opportunity to make this family haven your own.



EPC Rating: E  
Council Tax Band: E  
Tenure: Freehold

Viewing by appointment with our  
Select Consultant on

01603 221797

or email [select.norwich@sequencehome.co.uk](mailto:select.norwich@sequencehome.co.uk)

William H Brown, 5 Bank Plain, Norwich, Norfolk NR2 4SF



1. MONEY LAUNDERING REGULATIONS 2003 Intending purchasers will be asked to produce identification documentation at a later stage and we would ask for your co-operation in order that there will be no delay in agreeing the sale. 2. These particulars do not constitute part or all of an offer or contract. 3. The measurements indicated are supplied for guidance only and as such must be considered incorrect. Potential buyers are advised to recheck measurements before committing to any expense. 4. We have not tested any apparatus, equipment, fixtures, fittings or services and it is in the buyers interest to check the working condition of any appliances. 5. Where an EPC, Home Report or, under former legislation a Home Information Pack, is held for this property, it is available for inspection at the branch by appointment. If you require a printed version, you will need to pay a reasonable reproduction charge reflecting printing and other costs. 6. We are not able to offer an opinion either verbal or written on the content of the Home Information Pack and this must be obtained from you legal representative. 7. While we take care in preparing the HIP, a buyer should ensure that his/her legal representative confirms as soon as possible all matters relating to title including the extent and boundaries of the property and other important matters before exchange of contracts.