

31 Village Centre, £199,500*

Shared Ownership available for £99,750 for 50% ownership
(Other charges apply)

RICHMOND
VILLAGES

Part of Bupa



EPC - B



One Bedroom Third Floor Apartment

This property is available through Shared Ownership for £99,750 (representing a 50% share). Rent for the remaining 50% is £115.10 per week.

Richmond Villages Wood Norton are delighted to offer this beautifully positioned one-bedroom apartment, located on the third floor and benefitting from far-reaching views of the open Worcestershire countryside. The property is conveniently located for easy access to the village's exceptional communal facilities, which include the main reception, Bredon restaurant, bar and coffee lounge, library, wellness spa with swimming pool, and a variety of outdoor seating areas.

Specification

- Spacious living room with double-glazed windows, enjoying countryside views, and featuring a remote-controlled electric fire with decorative marble surround.
- Modern fitted kitchenette with under-cupboard lighting and integrated fridge with freezer compartment.
- Master bedroom with views over open countryside.
- En-suite shower room with walk-in shower, modern fitted sanitary ware and heated towel rail.
- Entrance hall with useful storage cupboard.
- Underfloor heating throughout.
- TV and satellite points*
- Well stocked flower borders and lawns maintained by the Village Gardeners
- Allocated parking space for one car

*Satellite subscription not included.

Important Notice: These particulars are intended to give a fair and substantially correct overall description. Other fees and charges apply, please contact the Village Advisers for further details. Properties are sold on a 125 year lease and this property has 119 years remaining..



01386 862 222

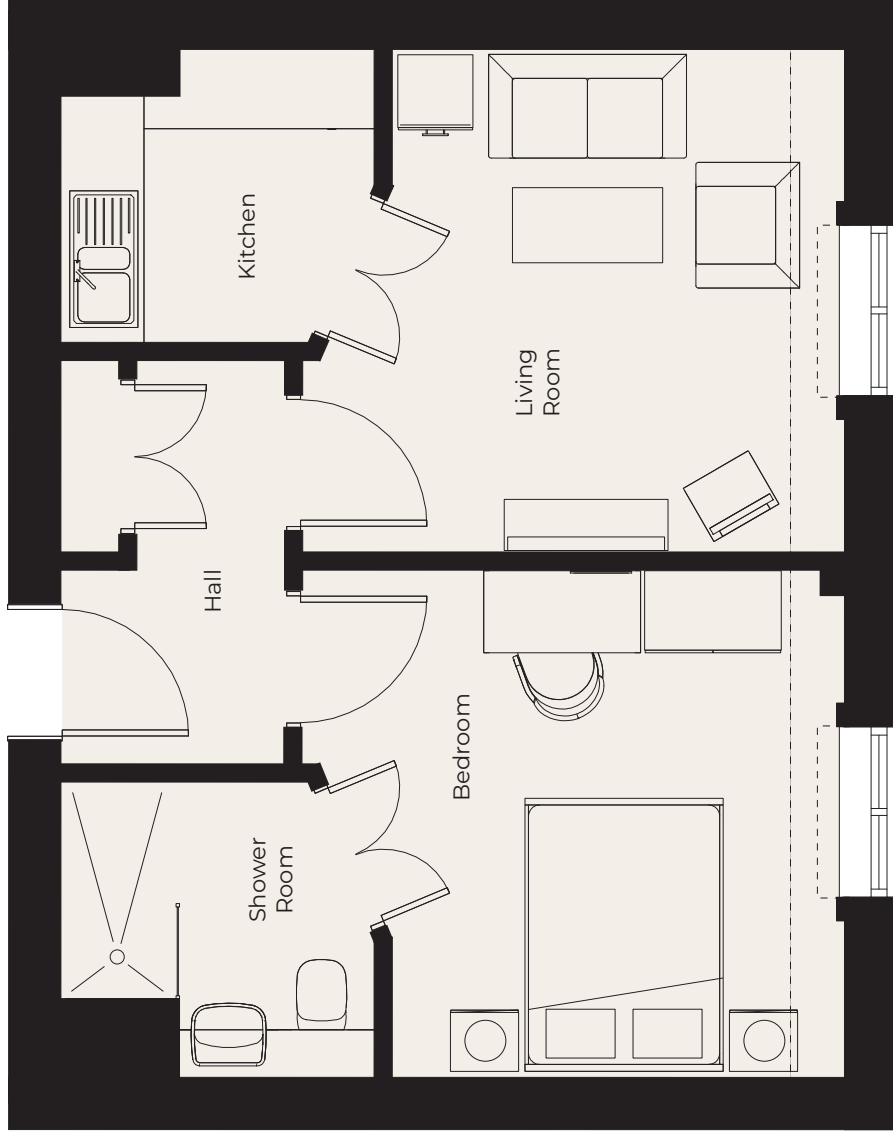
woodnorton@richmond-villages.com

Richmond Villages Wood Norton,
Evesham Road, Wood Norton, Evesham, Worcestershire WR11 4TY

31 Village Centre

Floor 3 | 42.01m² – 452.19ft²

- Kitchen**
2300mm x 2130mm
7'7" x 7'
- Living Room**
3947mm x 3717mm
12'11" x 12'2"
- Bedroom**
3682mm x 3316mm
12'1" x 10'11"
- Shower Room**
2300mm x 2180mm
7'7" x 7'2"



These particulars are intended to give a fair and substantially correct overall description. Measurements have been taken at 1500mm skirting height. All dimensions are approximate. Bedroom measurements include the wardrobe if applicable. Room measurements include bay windows if applicable. Furniture layout is to give an indicative impression. Although all efforts have been made to ensure its accuracy at time of print dimensions, fixtures, fittings, finishes and specifications are subject to change without notice. The properties are sold unfurnished.

