



46a Heron Drive, Witney



46a Heron Drive

Built in 2022 by well-renowned developers David Wilson Homes is this modern three-bedroom semi-detached home located on the popular Kingfisher Homes development.

Council Tax band: D

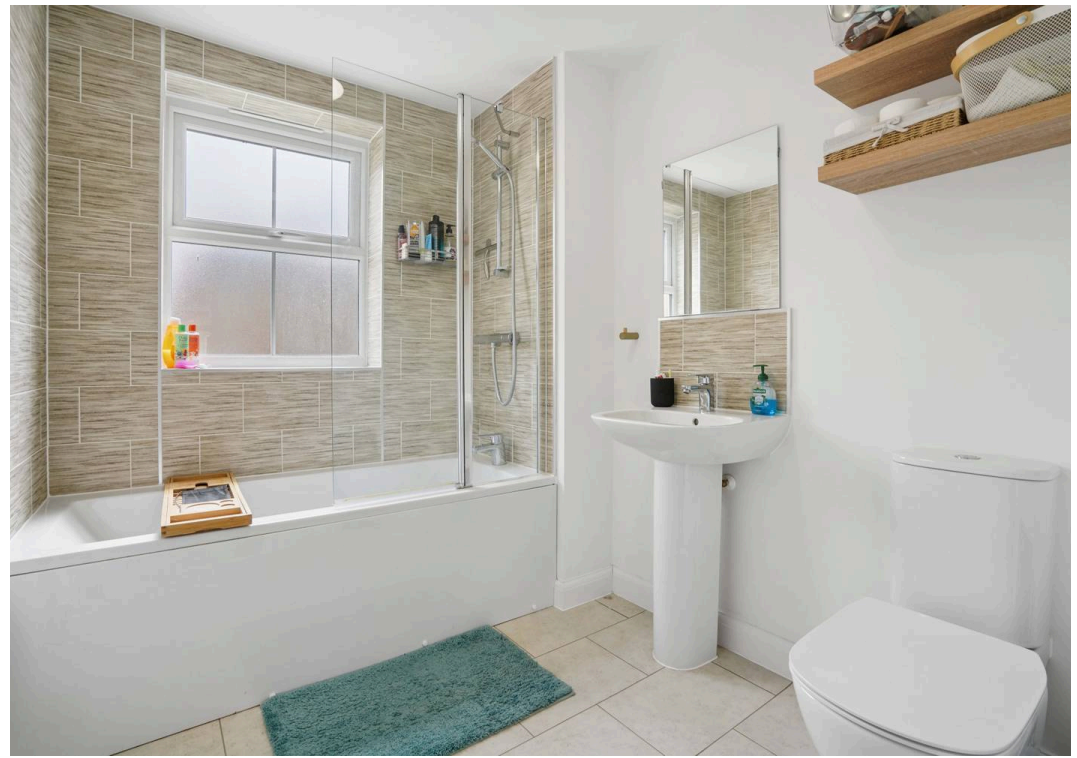
Tenure: Freehold

EPC Energy Efficiency Rating: B

EPC Environmental Impact Rating: B

- Built in 2022 by well-renowned developers David Wilson Homes is this great opportunity to purchase a three-bedroom semi-detached home located on the popular Kingfisher Meadows development.
- Modern kitchen/dining room with integrated appliances and french doors leading out to the rear garden.
- Garage and off-street parking.
- Master bedroom spanning the width of the top floor with built-in wardrobes and ensuite.
- Landscaped south-easterly facing rear garden with mature planting and decked area.
- Within walking distance off all town centre amenities.





Heron Drive - Witney

Approximate Gross Internal Area = 107.7 sq m / 1159 sq ft
(Excluding Garage & Including Void)



Illustration for identification purposes only, measurements are approximate,
not to scale. Fourlabs.co © (ID1302829)



Simpsons Witney Branch

4 Langdale Court Witney, Oxfordshire - OX28 6AD

01993 835030 • witney@simpsonsproperty.com • www.simpsonsproperty.com/