



591 Halliwell Road, Bolton

Offers Over £155,000

Miller Metcalfe
Every step of the way

591 Halliwell Road

Bolton, Bolton

Quaint & Characterful Grade II Listed Cottage Bursting With Charm No Onward Chain

** Looking for something historic and completely unique? This wonderfully appointed cottage has tons of appeal and is available immediately with no upward chain. The property flows elegantly with a neutral and modern twist but has remained sympathetic to its original features. With accommodation conveniently arranged over three spacious floors, this unique home has so much appeal and would be perfectly suited to a first time buyer, young couple or perhaps someone looking to downsize. The main front door provides access to a bright and airy lounge which is full of light. At the rear, you'll find a fully fitted kitchen area with a combination of base and eye level fitted units. Stairs lead down to the lower ground floor where there's a guest bedroom with a separate utility room with WC for added convenience. Head upstairs to the first floor where you'll find the master bedroom which provides access to a large family bathroom suite. The house stands proudly set back from Halliwell Road and is visibly striking from the front. A number of excellent amenities are nearby such as shops, schools, supermarkets and leisure facilities. For those that need to commute and travel, there's easy access to Bolton town centre by either car or public transport.

Council Tax band: A

Tenure: Leasehold

EPC Energy Efficiency Rating: D

EPC Environmental Impact Rating: E

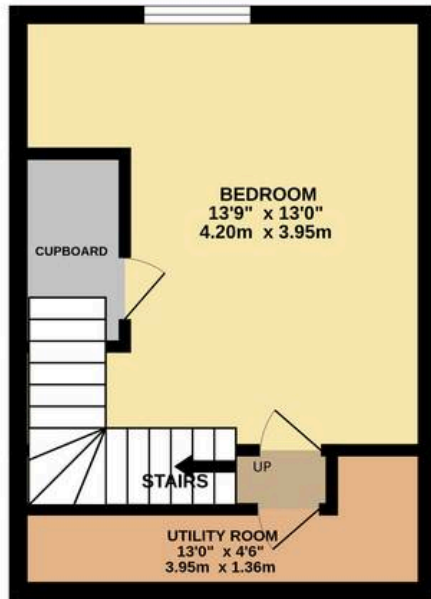




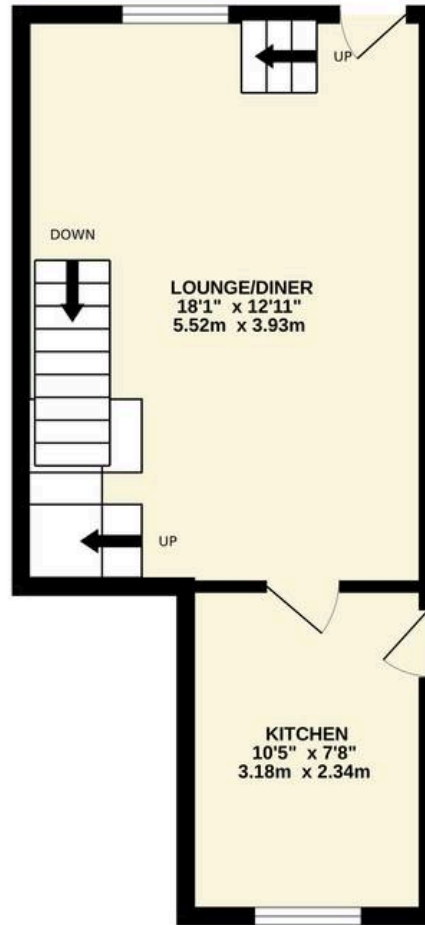




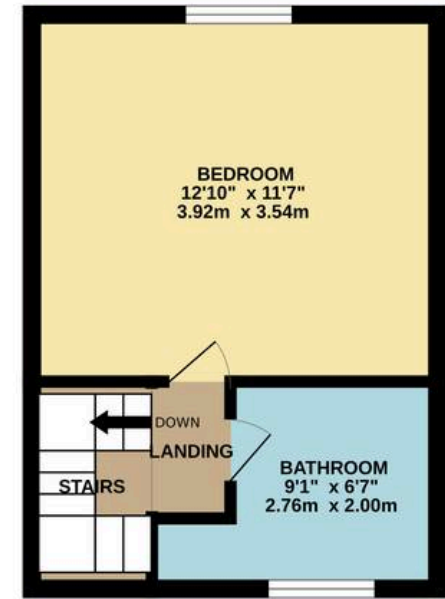
BASEMENT LEVEL
236 sq.ft. (22.0 sq.m.) approx.



GROUND FLOOR
314 sq.ft. (29.1 sq.m.) approx.



1ST FLOOR
234 sq.ft. (21.7 sq.m.) approx.



TOTAL FLOOR AREA : 784 sq.ft. (72.8 sq.m.) approx.

Whilst every attempt has been made to ensure the accuracy of the floorplan contained here, measurements of doors, windows, rooms and any other items are approximate and no responsibility is taken for any error, omission or mis-statement. This plan is for illustrative purposes only and should be used as such by any prospective purchaser. The services, systems and appliances shown have not been tested and no guarantee as to their operability or efficiency can be given.

Made with Metropix ©2026



Miller Metcalfe - Bolton

Miller Metcalfe, 2-10 Bradshawgate - BL1 1DG

01204 535353 • bolton@millermetcalfe.co.uk • millermetcalfe.co.uk/

Miller Metcalfe
Every step of the way