



97 Gloucester Road, Chesterfield, S41 7EF

Offers In The Region Of £199,950

- Deceptively spacious 3 bedroomed home
- Stunning kitchen diner
- Well located close to Chesterfield town centre and train station
- Offers in the region of £199,950
- Beautifully renovated throughout
- Utility room and Wc
- 3 Double bedrooms
- New combi boiler
- Enclosed rear garden
- Offered for sale with no chain

Gloucester Road, S41

DETAILS
Total area: 994.72 sq ft

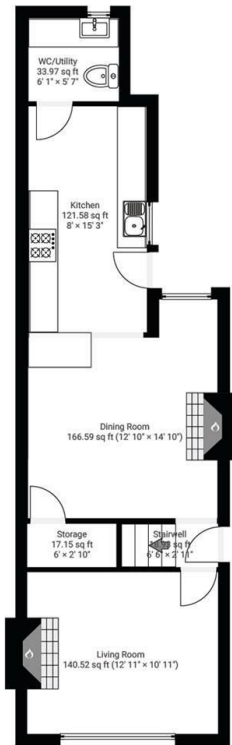


Square Box Media
info@squareboxmedia.com
www.squareboxmedia.com

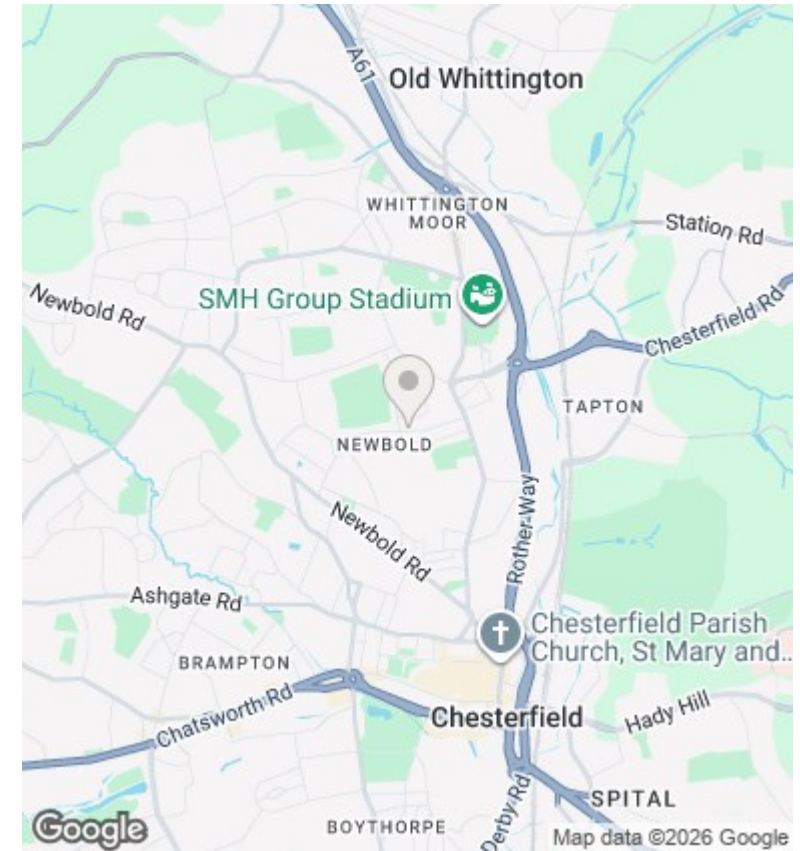
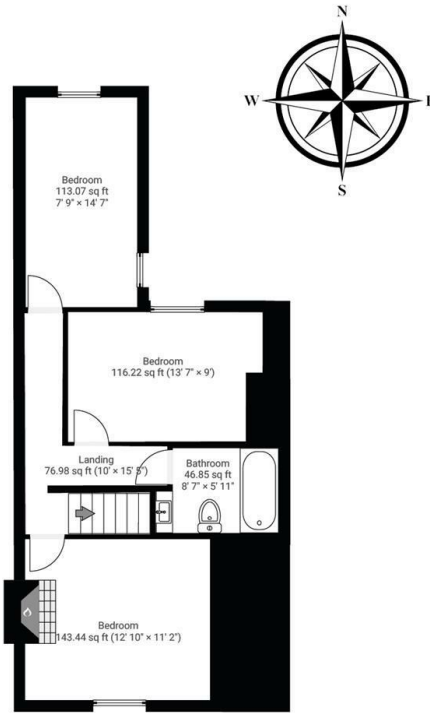
This floorplan is provided without any warranty. The actual size of dimensions may vary and this floorplan is intended for illustrative purposes only.



▼ **Ground Floor** TOTAL AREA: 498.42 sq ft



▼ **1st Floor** TOTAL AREA: 496.30 sq ft



Directions

Viewings

Viewings by arrangement only. Call 01246 276 276 to make an appointment.

Council Tax Band

C

EPC Rating:

D

Energy Efficiency Rating		Current	Potential
Very energy efficient - lower running costs			
(92 plus) A			
(81-91) B			
(69-80) C			79
(55-68) D		65	
(39-54) E			
(21-38) F			
(1-20) G			
Not energy efficient - higher running costs			
England & Wales		EU Directive 2002/91/EC	