



RESIDE
MANCHESTER



Ardwick Green Ardwick Green North
Manchester, M12 6ER

Asking Price £450,000



Ardwick Green Ardwick Green

Manchester, M12 6ER

Sustainable Urban Living at Ardwick Green.

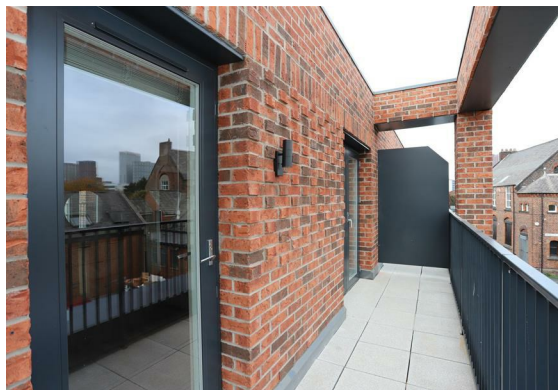
Located a few hundred metres from Piccadilly Station and overlooking the historic Ardwick Green, the latest development by Step Places comprises of 16 three-bedroom townhouses. Nestled among listed period properties, these houses will offer superb specification and sustainable living with Manchester's thriving City centre on your doorstep.

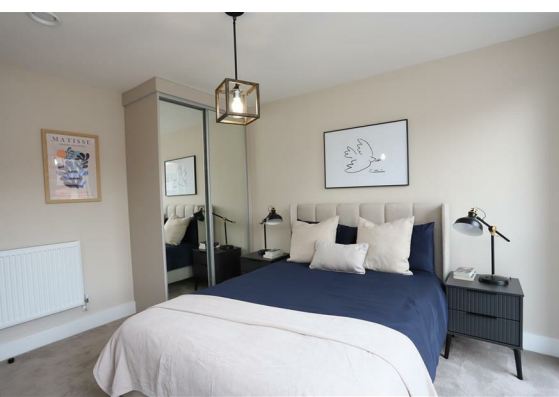
The award winning Ardwick Green development combines contemporary design with great light infused spaces, offering stylish homes with a modern twist, private parking, outdoor spaces and a welcoming community atmosphere.

Completion of the development will be before the end of this year and reservations are now being taken.

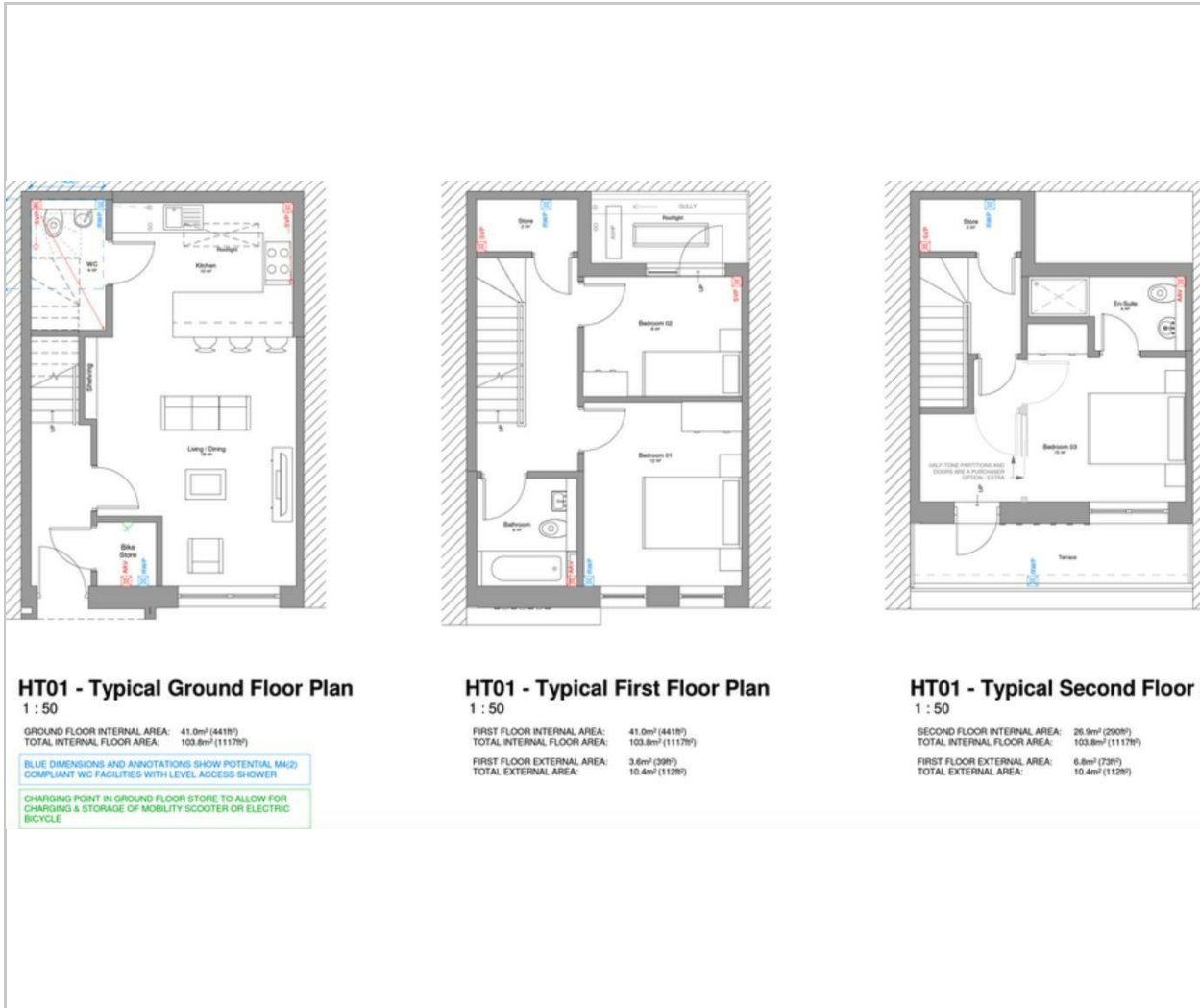
The show home is available to view by appointment only.

- Award Winning New Development
- Three bedroom townhouses
- All houses include a balcony and terrace
- On site car parking & EV point
- 1117 sqft
- Two Bathrooms
- Ready for immediate occupation
- Located on Ardwick Green
- Sustainable Houses
- EPC tbc

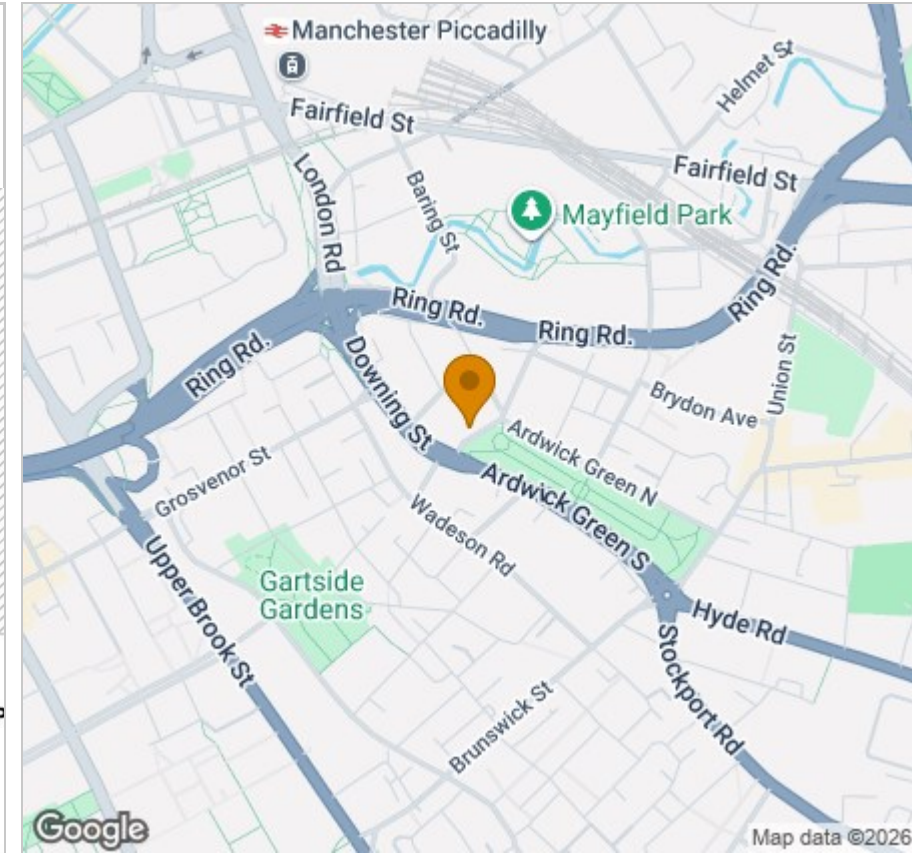




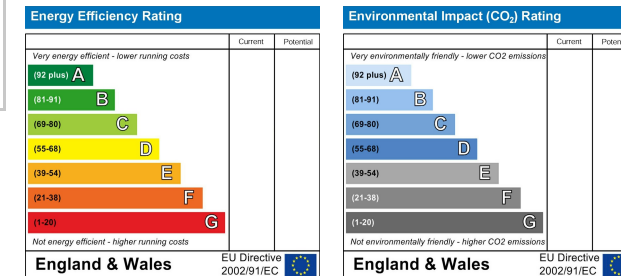
Floor Plan



Area Map



Energy Efficiency Graph



Viewing

Please contact our Reside Manchester Office on 0161 837 2840 if you wish to arrange a viewing appointment for this property or require further information.

These particulars, whilst believed to be accurate are set out as a general outline only for guidance and do not constitute any part of an offer or contract. Intending purchasers should not rely on them as statements of representation of fact, but must satisfy themselves by inspection or otherwise as to their accuracy. No person in this firm's employment has the authority to make or give any representation or warranty in respect of the property.