

HENDERSON CONNELLAN

ESTATE AGENTS



Saxon Dale Kettering NN16 9JN

"New Beginnings"

"New Beginnings"

With a well presented, stylish interior this impressive detached home enjoys a cul de sac setting on this highly sought after development. The town centre and a wealth of amenities are within easy reach to include Brambleside primary school, bus routes and the town centre. The spacious accommodation benefits from gas central heating and UPVC double glazing to include entrance hallway, guest cloakroom, generous living room with attractive fireplace, which flows to the dining room and onto the kitchen with integrated oven and hob with adjoining utility room. Upstairs you will find the family bathroom and four spacious bedrooms, three of which are double in size, the main bedroom with ensuite. Outside the driveway provides off road parking for two cars, integral single garage and a lawned frontage. The private rear garden is a great size with both patio, decking and lawned area.

Living Room - 5.18m x 3.35m (17'0" x 11'0")

Dining Room - 3.05m x 2.64m (10'0" x 8'8")

Kitchen - 3.3m x 3.05m (10'10" x 10'0")

Utility Room - 2.13m x 1.52m (7'0" x 5'0")

Guest WC - 1.52m x 0.91m (5'0" x 3'0")

Bedroom One - 5.05m x 3.28m (16'7" x 10'9")

Ensuite - 3.05m x 0.91m (10'0" x 3'0")

Bedroom Two - 3.58m x 2.44m (11'9" x 8'0")

Bedroom Three - 3.05m x 2.74m (10'0" x 9'0")

Bedroom Four - 2.87m x 2.13m (9'5" x 7'0")

Bathroom - 3.2m x 1.83m (10'6" x 6'0")

Garage - 5.05m x 2.36m (16'7" x 7'9")

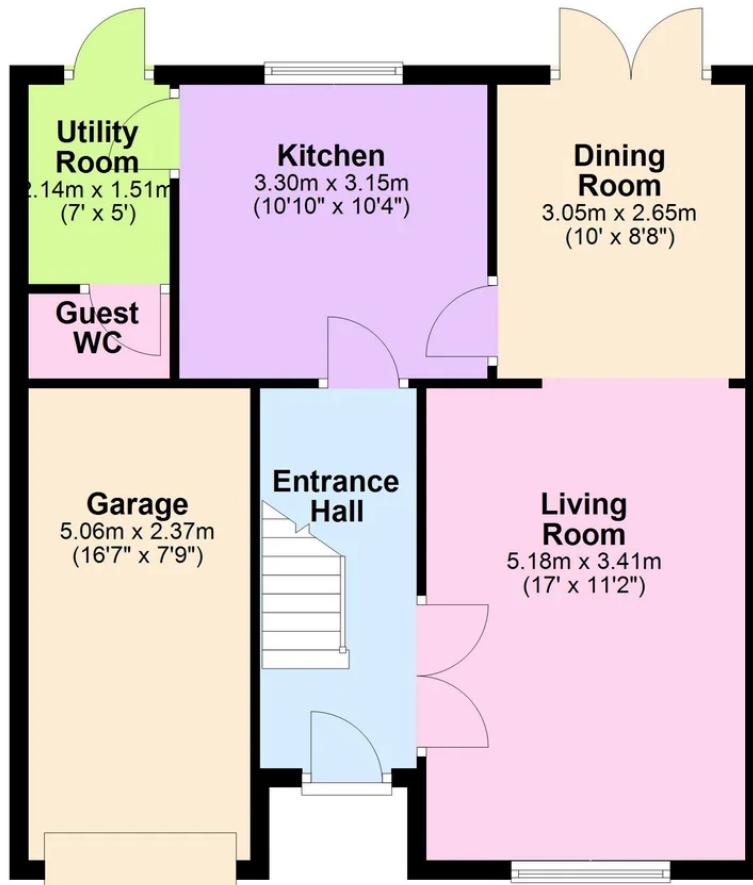
- UPVC Double Glazing
- Gas Central Heating
- 4 Bedrooms
- Detached House
- Private Garden
- Close To Amenities
- NO CHAIN
- EPC RATING: C
- COUNCIL TAX :D

Tenure: Freehold

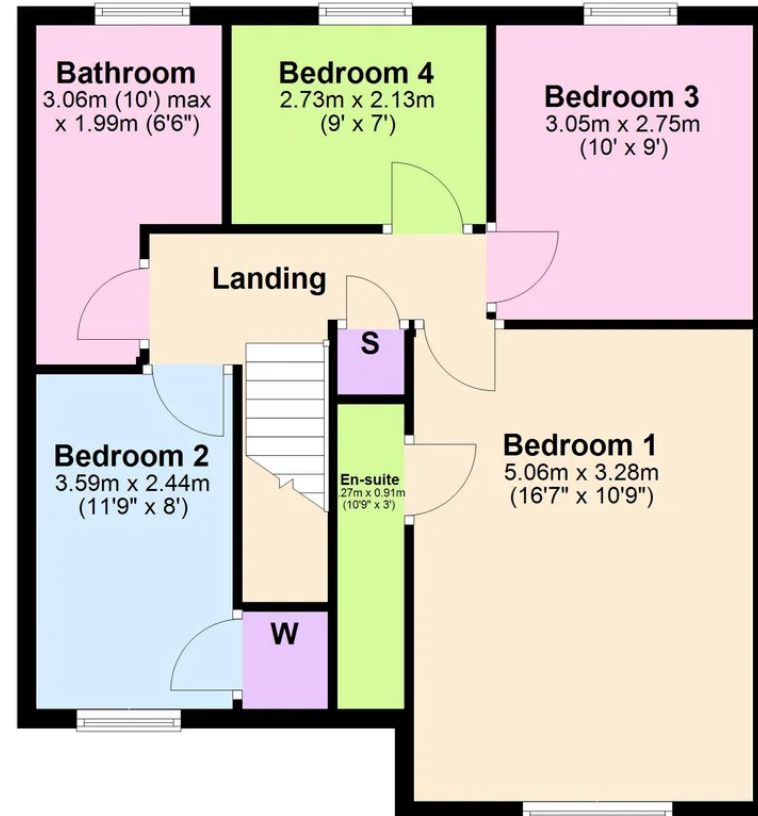




Ground Floor



First Floor



Henderson Connellan Kettering office 01536 417888 ketteringsales@hendersonconnellan.co.uk



Disclaimer: These particulars do not form part of any offer or contract and should not be relied upon as statements or representations of fact. Any areas, measurements of distances are approximate. The text, photographs and plans are for guidance only and are not necessarily comprehensive.

