



The Old Dairy High Street Kimpton, SG4 8QR

A brand new detached house built by local reputable builders, Jarvis Homes. The property offers excellent, stylish and spacious accommodation in this well regarded village location in the heart of Kimpton with the benefit of a private garden, garage and two allocated parking spaces.

****LAST REMAINING PLOT****

Guide price £640,000

The Old Dairy High Street

Kimpton, SG4 8QR



- 10 Year NHBC build warranty
- Cat 6 data cabling
- Under floor heating
- Garage and 2 allocated parking spaces
- Traditional Construction
- High Speed Fibre Broadband
- Air source heat pumps
- Contemporary Kitchen Designs
- Solar PV Panels
- Contemporary bathrooms

Hall

Family Bathroom

Cloakroom

Garage & 2 parking spaces

Living Room

15'3" x 11'1" (4.65 x 3.39)

Kitchen / Dining Room

14'9" x 14'5" (4.52 x 4.40)

Utility

Bedroom One

11'8" x 11'1" (3.57 x 3.39)

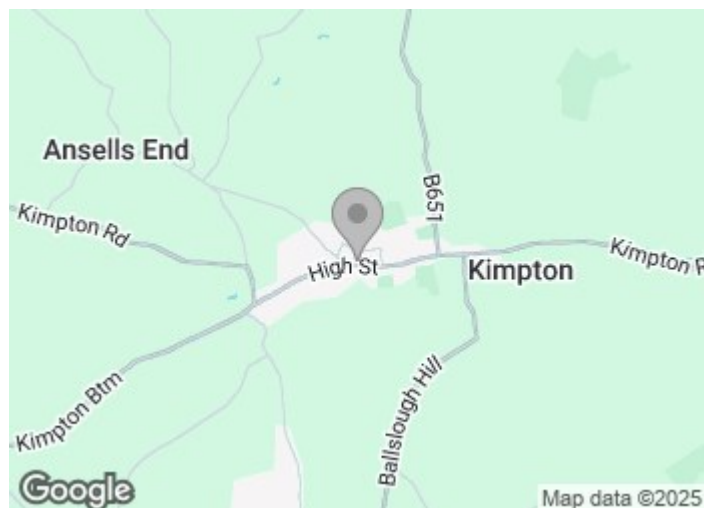
En Suite Shower

Bedroom Two

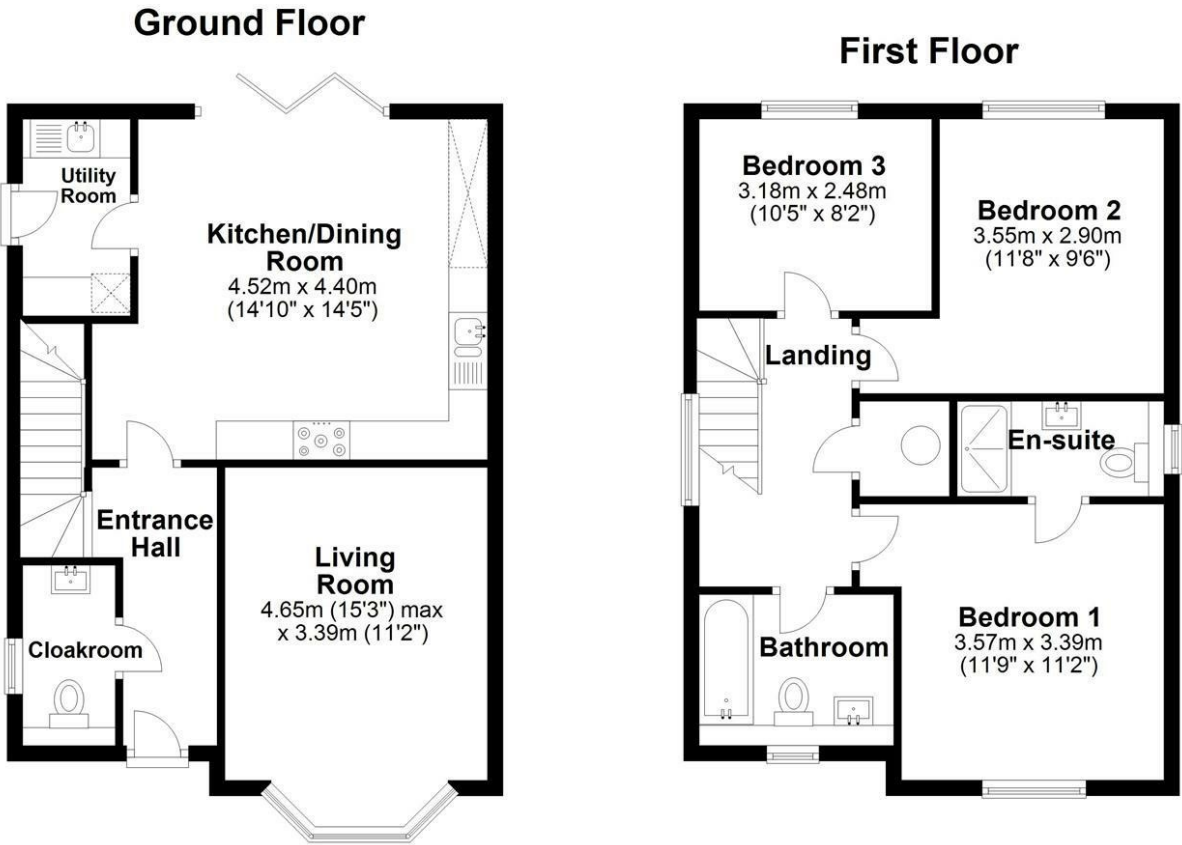
11'7" x 9'6" (3.55 x 2.90)

Bedroom Three

10'5" x 8'1" (3.18 x 2.48)







Total Area: approx. 105 Sq.metres 1130 Sq.feet
Plans,measurements and area supplied by Jarvis Homes
Sketch layout only. Not to scale. Plan produced for Whittaker & Co.
Plan produced using PlanUp.

These particulars, whilst believed to be accurate are set out as a general outline only for guidance and do not constitute any part of an offer or contract. Intending purchasers should not rely on them as statements of representation of fact, but must satisfy themselves by inspection or otherwise as to their accuracy. No person in this firms employment has the authority to make or give any representation or warranty in respect of the property.

