



**Price**

**£400,000**

**Freehold**

3x  1x  1x 

**Bruce Grove, Wickford,  
Essex, SS11**

**OVER 60?**

Secure this property  
for up to **59% less!**



**DOUGLAS  
ALLEN**

Helping you move forwards





## Main features

- Extended accommodation
- Large driveway leading to single garage
- Additional conservatory
- Great location within the ever popular Shotgate area
- Chalet style semi detached bungalow

## Accommodation

### GROUND FLOOR

Entrane Hallway

Bedroom 3: 9'2 x 8'10 (2.80m x 2.69m)

Bedroom 1: 13'9 x 10'7 (4.19m x 3.23m)

Lounge: 18'6 x 11'0 (5.64m x 3.36m)

Dining Area: 9'0 x 7'7 (2.75m x 2.31m)

Kitchen: 9'2 x 9'1 (2.80m x 2.77m)

Conservatory: 10'10 x 10'2 (3.30m x 3.10m)

Bathroom

### FIRST FLOOR

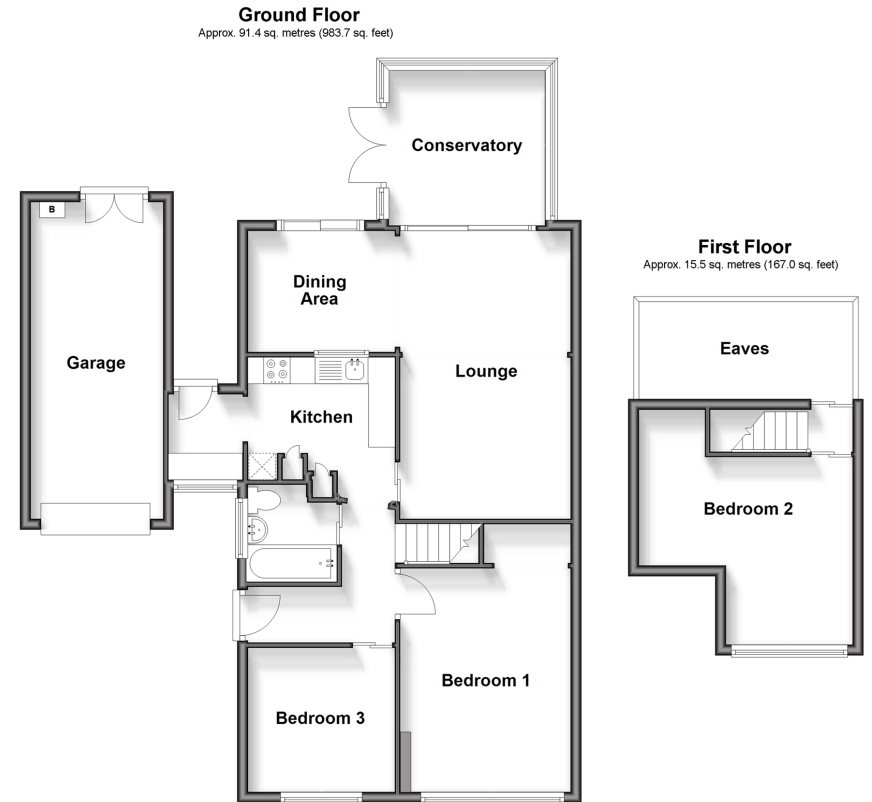
Bedroom 2: 13'2 x 11'10 (4.02m x 3.61m)

### OUTSIDE

Rear Garden

Off Street Parking

Garage



**Call Wickford - 01268 561287 ■ [douglasallen.co.uk](http://douglasallen.co.uk)**

- Legal advice should be taken to verify fixtures/fittings, planning, alterations and/or lease details
- Appliances & services are untested, dimensions are approximate and floor plans are not to scale
- Through a Homewise Home For Life Plan people aged 60+ can secure this property for up to 50% less, by purchasing a Lifetime Lease



53413040/20260105/RP/AH