



Wigmore Street  
Marylebone, W1U

CHESTERTONS







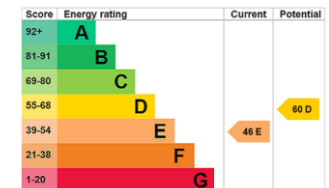


Introducing a stylish two-bedroom flat located in the heart of the vibrant city centre. This beautifully presented property boasts a contemporary open-plan living area, perfect for entertaining guests or relaxing after a long day. The fully fitted kitchen is equipped and ideal for whipping up delicious meals. The spacious bedroom offers a tranquil retreat with ample storage space, while the luxurious bathroom features a sleek design and modern fixtures.

Situated in a sought-after location, residents will benefit from easy access to a range of amenities including shops, restaurants, and public transport links. This property is perfect for young professionals or couples looking for a convenient city lifestyle. Don't miss out on the opportunity to make this stunning flat your new home. Contact us today to arrange a viewing and secure your dream property.

- 2 bed
- 2 bath
- Balcony
- Prime Location

Additional tenant charges apply (fees apply to non-AST tenancies only)  
 Tenancy Agreement Fee: £300  
 References per Tenant/Guarantor: £60  
 Inventory check (approx. £100 – £250 inc. VAT)  
[chestertons.co.uk/property-to-rent/applicable-fees](https://www.chestertons.co.uk/property-to-rent/applicable-fees)



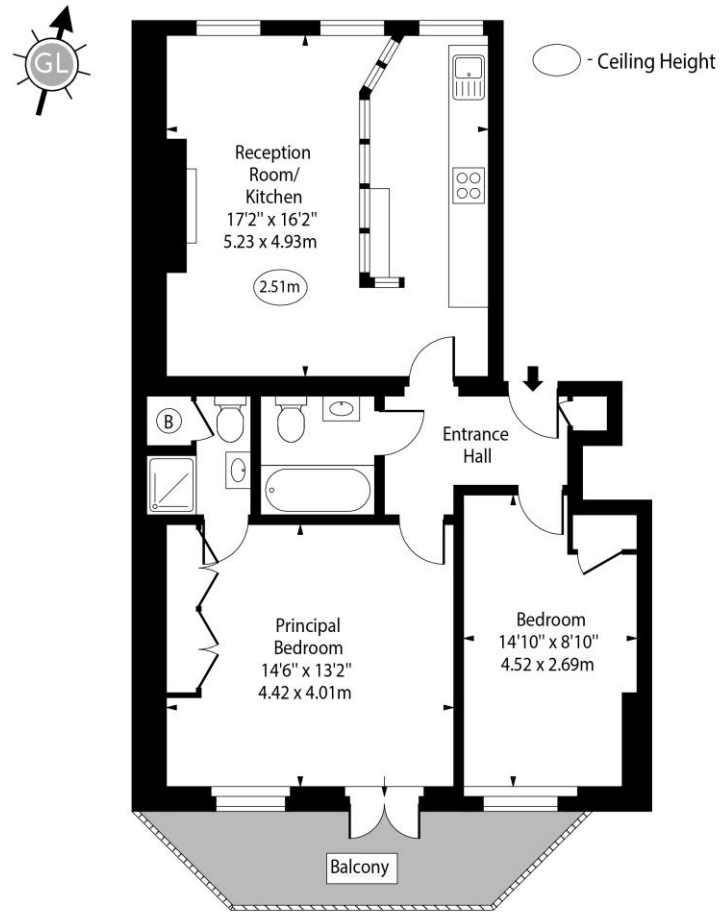
**Minimum Term:** 12 months  
**Deposit Required:** Five weeks  
**Local Authority:** City of Westminster  
**Council Tax Band:** G  
**EPC Rating:** E

*Chestertons Hyde Park & Marylebone Lettings*

40 Connaught Street  
 Hyde Park & Marylebone  
 London  
 W2 2AB

[hydeparklettingsusers@chestertons.co.uk](mailto:hydeparklettingsusers@chestertons.co.uk)  
 02072985950

Wigmore Street, W1U



Second Floor

Approx Gross Internal Area 753 Sq Ft - 69.95 Sq M

Every attempt has been made to ensure the accuracy of the floor plan shown.  
However, all measurements, fixtures, fittings, and data shown are approximate interpretations and  
for illustrative purposes only. Measured according to the RICS. Not To Scale.  
[www.goldlens.co.uk](http://www.goldlens.co.uk)  
Ref. No. 030211E

Chesterton UK Services Limited trading as Chestertons for themselves and for the vendor of this property whose agents they are, give notice that (i) these particulars do not constitute any part of an offer or contract, (ii) all statements contained within these particulars are made without responsibility on the part of Chestertons or the vendor, (iii) whilst made in good faith, none of the statements contained within these particulars are to be relied upon as a statement or representation of fact, (iv) any intending purchasers must satisfy themselves by inspection or otherwise as to the correctness of each of the statements contained within these particulars, (v) the vendor does not make or give either Chestertons or any person in their employment any authority to make or give representation or warranty whatsoever in relation to this property. Wide angle lenses may be used. ©Copyright Chestertons | Chesterton Global Ltd | Registered Office 40 Connaught Street, Hyde Park, London W2 2AB Registered Company Number 05334580.

