



Shepherds Bush Road, W6

£519 Per week

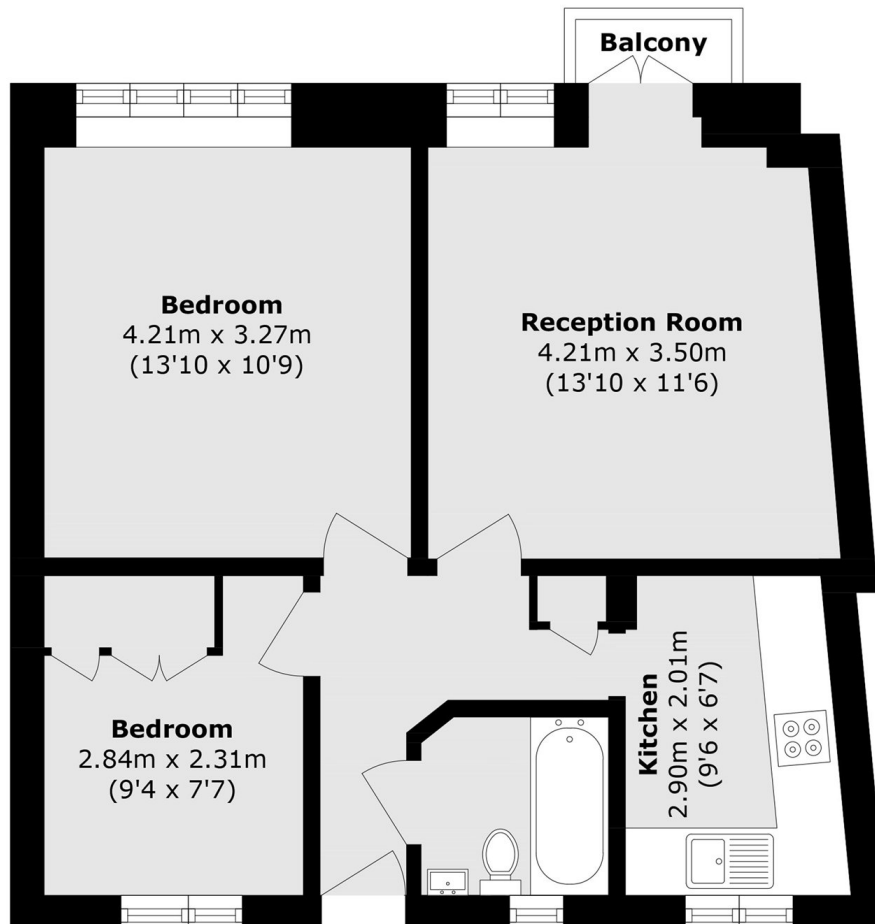
A stylish and modern two-bedroom apartment set within the sought-after Grampians Building in W6. This well-presented home offers bright and contemporary living space, complemented by a charming Juliet balcony that brings in plenty of natural light. Residents benefit from lift access, a 24-hour porter, and a superb location close to excellent transport links, shops, and local amenities. Ideal for professionals, couples, or investors seeking a smart London residence in a well-maintained development.

Ideally positioned in the heart of Hammersmith, the property is within easy reach of the River Thames, Chiswick High Road, and the extensive shopping, dining, and entertainment amenities of Hammersmith Broadway. Excellent transport connections are provided by Hammersmith Underground Station (District, Piccadilly, Circle, and Hammersmith & City lines), offering convenient access into Central London and Heathrow Airport.

Features

Two Bedroom
Modern
Juliet Balcony
24 Hour Porter
Lift Access

Shepherds Bush Road,
London, W6



Total area (approx.): 48.3 sq. m (519.9 sq. ft)

Balcony Total (approx.): 0.79 sq. m (8.5 sq. ft)