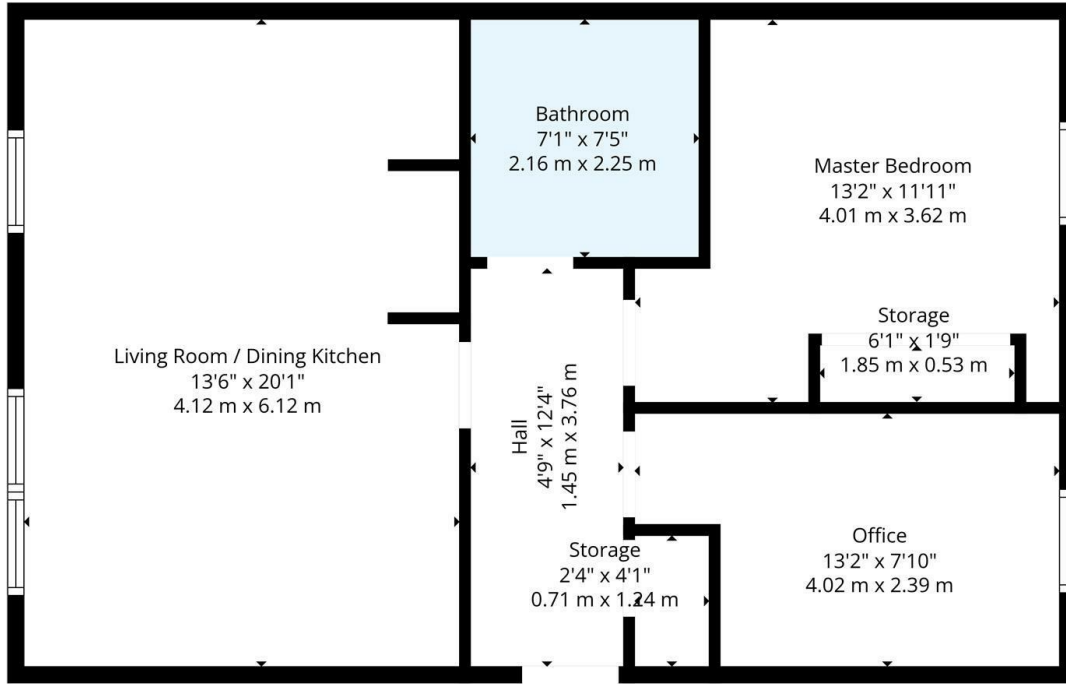




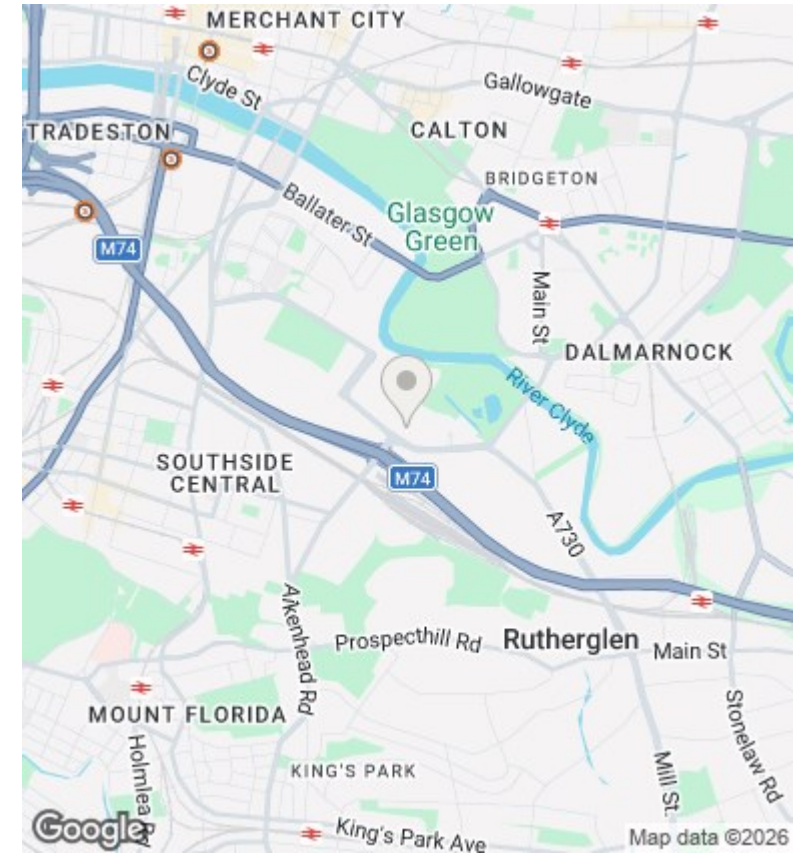
3/2, 55 Huntersraig Drive, Oatlands, Glasgow, G5 0GW

Offers Over £170,000

- Modern two bedroom top floor apartment
- Fully upgraded with bespoke, made-to-measure interiors throughout
- EER Band B
- South-facing open plan living/dining/kitchen filled with natural light
- Residents and on-street parking with consistently available spaces
- 5 mins to Glasgow Green, 20-min scenic walk to city centre
- Security entry, double glazing and gas central heating



TOTAL: 624 sq. ft, 58 m2
 1st floor: 624 sq. ft, 58 m2
 EXCLUDED AREAS: STORAGE: 20 sq. ft, 2 m2, WALLS: 54 sq. ft, 5 m2
Floor Plan Created By Cubicase App. Measurements Deemed Highly Reliable But Not Guaranteed.



Directions

Viewings

Viewings by arrangement only. Call 01417262111 to make an appointment.

Council Tax Band

EPC Rating:

B

Energy Efficiency Rating		
	Current	Potential
Very energy efficient - lower running costs		
(92 plus) A		
(81-91) B	82	82
(69-80) C		
(55-68) D		
(39-54) E		
(21-38) F		
(1-20) G		
Not energy efficient - higher running costs		
Scotland	EU Directive 2002/91/EC	