



ASPIRE

— TO MOVE —



Beaufort East, Bath, BA1

Video and physical viewings available. Two bedroom top floor flat located in Larkhall, Bath. The property is offered unfurnished and is available from the 7th August.

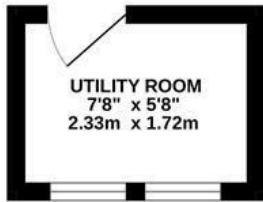
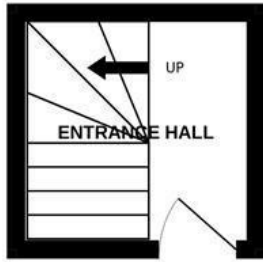
Beaufort East is a Grade II listed townhouse conveniently set back from the London Road in Larkhall, Bath. It is just 0.2 miles from the A46 and Bath city centre is a level 1.4 mile walk away. There are lots of local amenities to be found in Larkhall including a renowned butchers, cafe's, farm shop, co-op, pet shop and much more! Alice park is 0.2 miles away.

£1,450 PCM

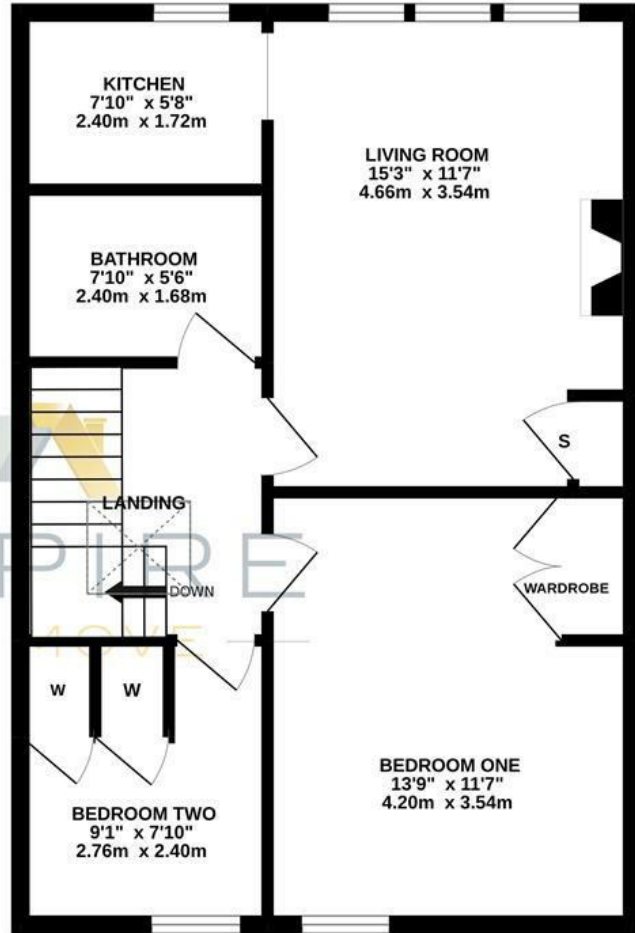
- Two bedroom flat, one double, one single
- Video viewing available
- Top floor flat
- Available 7th August
- On street parking
- Not suitable for sharers
- Council tax band B
- Holding deposit: £334
- Unfurnished

Floor Plans

2ND FLOOR
101 sq.ft. (9.4 sq.m.) approx.



3RD FLOOR
562 sq.ft. (52.2 sq.m.) approx.

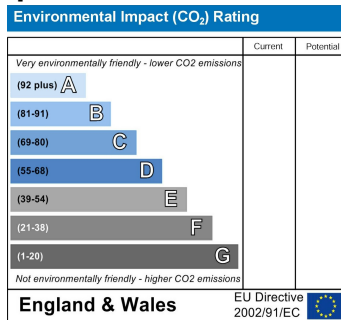
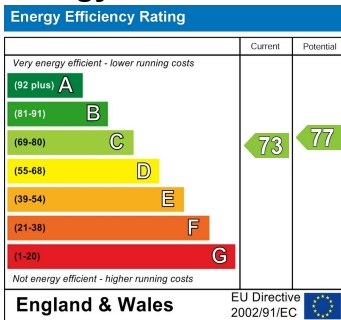


BEAUFORT EAST, BATH, BA1

TOTAL FLOOR AREA: 662 sq.ft. (61.5 sq.m.) approx.

Whilst every attempt has been made to ensure the accuracy of the floorplan contained here, measurements of doors, windows, rooms and any other items are approximate and no responsibility is taken for any error, omission or mis-statement. This plan is for illustrative purposes only and should be used as such by any prospective purchaser. The services, systems and appliances shown have not been tested and no guarantee as to their operability or efficiency can be given.
Made with Metropix ©2022

Energy Performance Graph



These particulars, whilst believed to be accurate are set out as a general outline only for guidance and do not constitute any part of an offer or contract. Intending purchasers should not rely on them as statements of representation of fact, but must satisfy themselves by inspection or otherwise as to their accuracy. No person in this firm's employment has the authority to make or give any representation or warranty in respect of the property.