



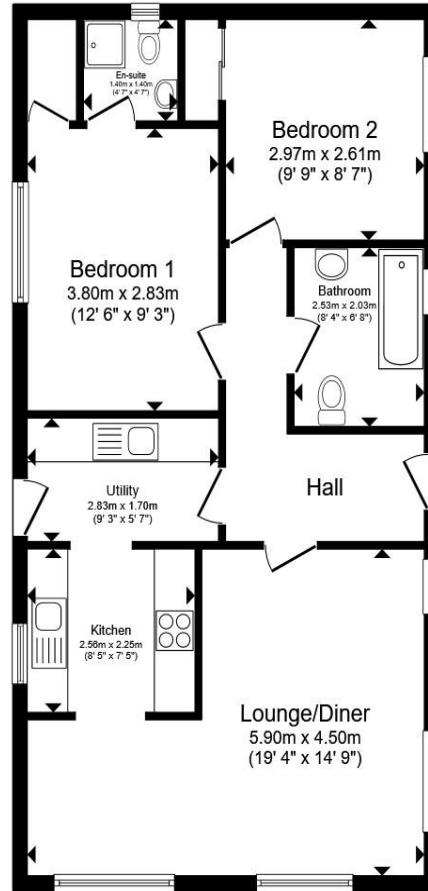
Mandalay Park, Whittlesey Peterborough PE7 1WF

welcome to

Mandalay Park, Whittlesey Peterborough

A well presented, deceptively spacious park home, set on a pleasant development and offering: entrance hall, lounge diner, kitchen, utility, two bedrooms, ensuite to the master, family bathroom, maintenance free grassed area ,, patio and parking space. Must be viewed to appreciate.





Ground Floor

Total floor area 69.2 m² (745 sq.ft.) approx

This floor plan is for illustrative purposes only. It is not drawn to scale. Any measurements, floor areas (including any total floor area), openings and orientation are approximate. No details are guaranteed, they cannot be relied upon for any purpose and they do not form part of any agreement. No liability is taken for any error, omission or misstatement. A party must rely upon its own inspection(s). Powered by www.propertybox.io



Entrance Hall

Lounge Diner

Lounge Area

Dining Area

Kitchen

10' 6" x 7' 11" (3.20m x 2.41m)

Utility

Bedroom 1

Ensuite

Bedroom 2

Bathroom

Outside The Property

Agents Note:

welcome to

Mandalay Park, Whittlesey Peterborough

- very well presented park home
- lounge diner
- kitchen, utility
- two bedrooms, ensuite and family bathroom
- garden and parking

Tenure: EPC Rating: Exempt
Council Tax Band: A

We are currently awaiting Tenure details. For further information please contact the branch. Please note additional fees could be incurred for items such as leasehold packs.

offers in excess of

£170,000



Please note the marker reflects the postcode not the actual property

view this property online williamhbrown.co.uk/Property/YXZ109597



Property Ref:
YXZ109597 - 0003

1. MONEY LAUNDERING REGULATIONS Intending purchasers will be asked to produce identification documentation at a later stage and we would ask for your co-operation in order that there is no delay in agreeing the sale. 2. These particulars do not constitute part or all of an offer or contract. 3. The measurements indicated are supplied for guidance only and as such must be considered incorrect. Potential buyers are advised to recheck measurements before committing to any expense. 4. We have not tested any apparatus, equipment, fixtures or services and it is in the buyers interest to check the working condition of any appliances. 5. Where an EPC, or a Home Report (Scotland only) is held for this property, it is available for inspection at the branch by appointment. If you require a printed version of a Home Report, you will need to pay a reasonable production charge reflecting printing and other costs. 6. We are not able to offer an opinion either written or verbal on the content of these reports and this must be obtained from your legal representative. 7. Whilst we take care in preparing these reports, a buyer should ensure that his/her legal representative confirms as soon as possible all matters relating to title including the extent and boundaries of the property and other important matters before exchange of contracts.

William H Brown is a trading name of Sequence (UK) Limited which is registered in England and Wales under company number 4268443, Registered Office is Cumbria House, 16-20 Hockliffe Street, Leighton Buzzard, Bedfordshire, LU7 1GN. VAT Registration Number is 500 2481 05.



william h brown



01733 242433



Yaxley@williamhbrown.co.uk



Unit 9 Landsdowne Road, Yaxley,
PETERBOROUGH, Cambridgeshire, PE7 3JL



williamhbrown.co.uk