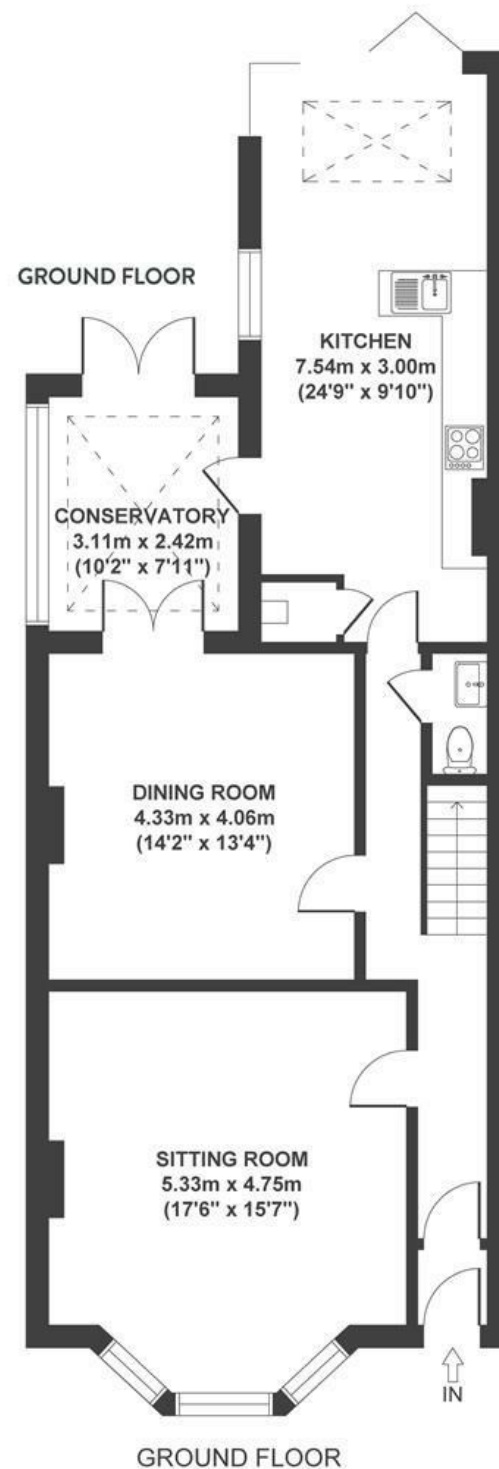


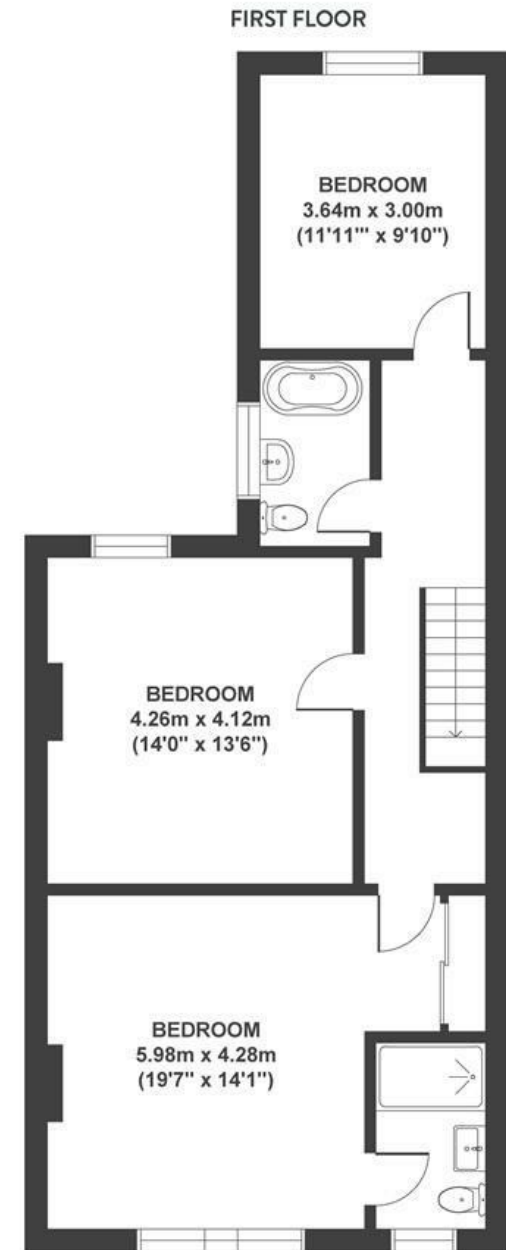
Ashley Park

ST ANDREWS

APPROXIMATE FLOOR AREA
158 SQM / 1701 SQFT



GROUND FLOOR



FIRST FLOOR

Boardwalk

Ashley Park

, BRISTOL



£800,000



BS6 5DX



3 Bedrooms



2 Bathrooms

"One of the things we love about the house is the sense of calm, despite being in the middle of things. Gloucester Road and town are within easy reach, but you wouldn't know it once you're home. The kitchen gets the morning sun and in the evening, the sun peaks through to the garden over the garage, perfect for a drink with surprising views over the valley."

