



St. Marys Road, KT6

£375,000

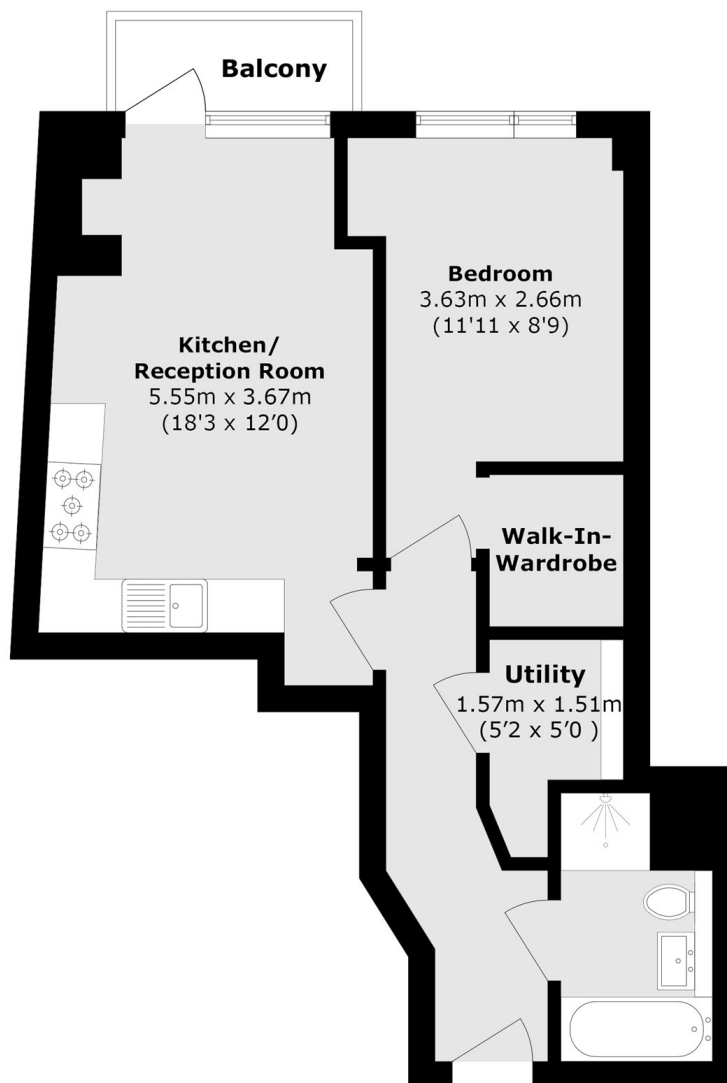
A bright one bedroom apartment situated in the centre of Surbiton in a luxury, modern development. This apartment has an open plan reception room and smart integrated kitchen, one large bedroom, a beautiful bathroom and a private balcony. This property offers both ideal lifestyle and ultimate comfort, with a utility room and a walk-in-wardrobe.

Nestled in the heart of Surbiton, with the buzz of Surbiton high street, the wonderful monthly farmers market and the convenience of the mainline train station and its fast train in to London Waterloo under half a mile away.

Features

- Open Plan Living
- One Bedrooms
- Private Balcony
- Central Location
- Utility Room
- Modern Finish

St. Marys Road, Surbiton, KT6



Total area (approx.): 51.1 sq. m (550.0 sq. ft)
Balcony area (approx.): 2.7 sq. m (29.0 sq. ft)